

Clinical Study Synopsis

This Clinical Study Synopsis is provided for patients and healthcare professionals to increase the transparency of Bayer's clinical research. This document is not intended to replace the advice of a healthcare professional and should not be considered as a recommendation. Patients should always seek medical advice before making any decisions on their treatment. Healthcare Professionals should always refer to the specific labelling information approved for the patient's country or region. Data in this document or on the related website should not be considered as prescribing advice. The study listed may include approved and non-approved formulations or treatment regimens. Data may differ from published or presented data and are a reflection of the limited information provided here. The results from a single trial need to be considered in the context of the totality of the available clinical research results for a drug. The results from a single study may not reflect the overall results for a drug.

The following information is the property of Bayer HealthCare. Reproduction of all or part of this report is strictly prohibited without prior written permission from Bayer HealthCare. Commercial use of the information is only possible with the written permission of the proprietor and is subject to a license fee. Please note that the General Conditions of Use and the Privacy Statement of bayerhealthcare.com apply to the contents of this file.

Clinical Trial Results Synopsis

Study Design Description		
Study Sponsor:	Bayer HealthCare AG in co-operation with Johnson & Johnson Pharmaceutical Research & Development	
Study Number:	11630	NCT 00403767
Study Phase:	III	
Official Study Title:	<p>A prospective, randomized, double-blind, double-dummy, parallel-group, multicenter, event-driven, non-inferiority study comparing the efficacy and safety of once daily oral Rivaroxaban (BAY 59-7939) with adjusted-dose oral warfarin for the prevention of stroke and non-central nervous system systemic embolism in subjects with non-valvular atrial fibrillation.</p> <p>The ROCKET AF Trial (Rivaroxaban <u>O</u>nce Daily Oral Direct Factor Xa Inhibition <u>C</u>ompared with Vitamin <u>K</u> Antagonism for Prevention of Stroke and Embolism <u>T</u>rial in <u>A</u>trial <u>F</u>ibrillation)</p>	
Therapeutic Area:	Cardiology/Coagulation	
Test Product		
Name of Test Product:	Rivaroxaban (Xarelto, BAY59-7939)	
Name of Active Ingredient:	Rivaroxaban	
Dose and Mode of Administration:	Rivaroxaban 20 mg tablets were administered orally, and warfarin placebo tablets were administered orally.	
Reference Therapy/Placebo		
Reference Therapy:	Warfarin	
Dose and Mode of Administration:	Warfarin was supplied as 1 mg, 2.5 mg, and 5 mg tablets for oral administration and Rivaroxaban placebo was supplied as immediate release tablets for oral administration.	
Duration of Treatment:	The duration of the treatment period for a given subject depended on the time required to accrue adjudicated primary efficacy endpoint events, i.e., stroke or non-central nervous system (CNS) systemic embolism, in the per protocol population. As a result, the time on study drug varied from subject to subject depending upon the time of the subject's enrollment. The expected maximum duration of the study was 32 months, but the protocol permitted it to extend to a maximum of 4 years depending on the rate of subject recruitment and endpoint event rates.	
Studied period:	Date of first subjects' first visit:	18 DEC 2006
	Date of last subjects' last visit:	07 SEP 2010
Premature Study Suspension / Termination:	No	
Substantial Study Protocol Amendments:	<p>Amendment no. 1 (dated 08 JUN 2007) incorporated the following substantial changes:</p> <ul style="list-style-type: none"> Extended the screening period from 14 days to 30 days (Day - 30 to Day 1). 	

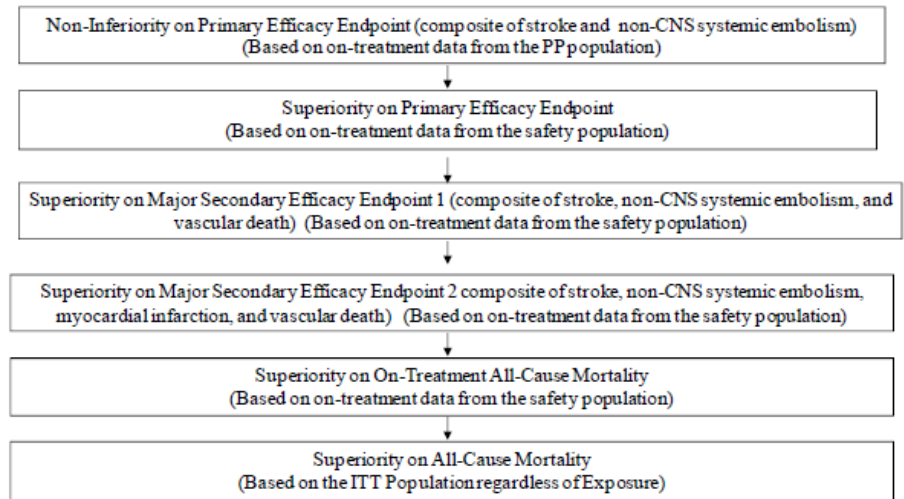
	<ul style="list-style-type: none"> Modified acceptable documentation of atrial fibrillation wherein instead of subjects required to have one electrocardiogram (ECG) rhythm tracing within 30 days of randomization demonstrating atrial fibrillation, the newly diagnosed subjects were to have 2 ECG documented episodes within at least 24 hours and should not have been candidates for cardioversion. Vitamin K antagonist (VKA) use defined as use of VKA for 2 weeks or longer at the time of screening was changed to VKA use for 6 weeks or longer at the time of screening. Systemic treatment with strong inducers and inhibitors of cytochrome P450 3A4 was excluded. Specified additional congestive heart failure, hypertension, age, diabetes, and history of stroke (CHADS₂) subgroup analysis. <p>Amendment no. 2 (dated 13 FEB 2009) incorporated the following substantial changes:</p> <ul style="list-style-type: none"> The rate of enrollment into the planned PK/PD component of the study was low. The original PK/PD component was replaced by a matched PK/PD sub study that was expected to enroll a sufficient number of subjects in selected countries and sites and provide meaningful PK/PD data by study end. The total volume of blood collected for each subject was revised to 179 mL from 197 mL to reflect the new matched PK/PD sampling schedule. Identified the number of matched PK and PD blood samples to be collected from each subject, time of sample collection, and the timing relative to dosing. At the selected sites participating in the matched PK and PD sub study, collection of a PD blood sample from all subjects was added at baseline (screening or on Day 1 before dosing). Added the intention to include subjects with moderate renal impairment in the PK and PD sub study.
Study Centre(s):	Over 1,170 sites in 45 countries worldwide randomized subjects in this study.
Methodology:	<p>This prospective, randomized, double-blind, double-dummy, parallel-group, active-controlled, multicenter, event-driven study compared the efficacy and safety of rivaroxaban with warfarin for the prevention of stroke and non-central nervous system (CNS) systemic embolism in subjects with non-valvular atrial fibrillation (AF). The study was divided into a screening period, a double-blind treatment period closing with an end-of-study visit (EOS), and a post treatment observation period. The screening period began up to 30 days before randomization of the subject into the study. Subjects returned for visits at Weeks 1, 2, 4, and then every 4 weeks thereafter for the duration of the double-blind treatment period. All randomized subjects were followed until the study ended (405 adjudicated primary efficacy endpoint events reached followed by study closure activities) even if they did not take study drug or prematurely discontinued study drug. At the EOS visit or at an early study medication discontinuation (ESMD) visit for premature discontinuation of study therapy, subjects were transitioned from study drug to an open-label VKA or other appropriate therapy as determined by the investigator. A follow-up visit was performed approximately 30 days (\pm 5 days) after the EOS or ESMD visit. Subjects who prematurely discontinued study drug were contacted by the investigative site every 12 weeks to assess efficacy endpoint events and vital status until end of trial site</p>

	<p>notification, with the exception of subjects at sites that were closed for Good Clinical Practices (GCP) noncompliance or those who withdrew consent.</p> <p>Subjects were randomly assigned to receive rivaroxaban (20 mg orally once daily) or warfarin (orally once daily, titrated to a target INR of 2.5 [range 2.0 to 3.0, inclusive]). Subjects with moderate renal impairment at screening (defined as calculated creatinine clearance [CrCl] between 30 and 49 mL/min, inclusive) had a dose adaptation to rivaroxaban 15 mg orally once daily. Warfarin and matching rivaroxaban placebo, or rivaroxaban and matching warfarin placebo, were dose-adjusted based on either real or sham INR values, respectively. During the study, INR monitoring (using a Hemosense® point-of-care INR device [INRatio®]) was to occur as clinically indicated but at least every 4 weeks. Unblinded INR measurements were not performed while subjects were on study drug, except in case of a medical emergency. The following medications were not permitted concomitantly with study drug during the study: fibrinolytic therapy (not permitted within 10 days before randomization or during the study); aspirin (at doses >100 mg/day alone or ≤ 100 mg/day in combination with thienopyridines, except after vascular intervention); chronic treatment with a nonsteroidal anti-inflammatory drugs (NSAIDs); or systemic treatment with a strong inhibitor/inducer of cytochrome P450 3A4.</p> <p>An Executive Committee (EC) had overall responsibility for the design, conduct and reporting of the study. An Independent Data Monitoring Committee (IDMC) was commissioned for this study and monitored the progress of the study and ensured that the safety of subjects was not compromised. Recommendations from the IDMC were made to the EC. An independent blinded Clinical Endpoint Committee (CEC) applied the protocol-specified definitions and adjudicated and classified the study endpoints. A prespecified interim analysis was performed when approximately 50% (202) of the required total primary efficacy events occurred, to assess the option of stopping early for futility. All available data were used for the interim analysis.</p>
<p>Indication/ Main Inclusion Criteria:</p>	<p>Indication: Stroke and non-central nervous system systemic embolism with Non-Valvular Atrial Fibrillation</p> <p>Inclusion criteria: Men and women aged ≥18 years with non-valvular atrial fibrillation; history of prior stroke, transient ischemic attack (TIA) or non-CNS systemic embolism cardioembolic in origin or with 2 or more of the following risk factors: heart failure and/or left ventricular ejection fraction ≤35%, hypertension, age ≥75 years, or diabetes mellitus.</p> <p>Key exclusion criteria: Hemodynamically significant mitral valve stenosis, prosthetic heart valve, planned cardioversion, transient AF caused by a reversible disorder, active internal bleeding, history of or condition associated with increased bleeding risk, anemia (hemoglobin <10 g/dL), platelet count <90,000/μL at screening, sustained uncontrolled hypertension, severe, disabling stroke within 3 months or any stroke within 14 days</p>

	before randomization, calculated CrCL <30 mL/min at screening, known significant liver disease or alanine aminotransferase (ALT) >3 times the upper limit of normal (ULN).
Study Objectives:	<p><u>Primary:</u></p> <p>The primary objective of this study was to demonstrate that the efficacy of rivaroxaban, is non-inferior to that of dose-adjusted warfarin for the prevention of thromboembolic events in subjects with non-valvular atrial fibrillation as measured by the composite of stroke (including primary ischemic, primary hemorrhagic, and unknown type unless otherwise stated) and non-CNS systemic embolism. The principal safety objective of this study was to demonstrate that rivaroxaban is superior to dose-adjusted warfarin as assessed by the composite of major and non-major clinically relevant bleeding events.</p> <p><u>Secondary:</u></p> <p>The major secondary efficacy objectives were to compare the effects of rivaroxaban and warfarin with respect to the composite of stroke, non-CNS systemic embolism, and vascular death, and the composite of stroke, non-CNS systemic embolism, myocardial infarction (MI), and vascular death. Other secondary efficacy objectives were to compare the effects of rivaroxaban and warfarin with respect to the individual components of the composite primary and major secondary endpoints; disabling stroke (modified Rankin scale score of 3 to 5, inclusive), and all-cause mortality.</p> <p>Other safety objectives were to compare rivaroxaban and warfarin with respect to individual bleeding event categories; adverse events (AEs), and clinical laboratory evaluations.</p>
Evaluation Criteria:	<p><u>Efficacy (Primary):</u></p> <p>The primary efficacy outcome was the composite of stroke and non-CNS systemic embolism.</p> <p><u>Efficacy (Secondary):</u></p> <p>Major secondary efficacy endpoints included the composite of stroke, non-CNS systemic embolism, and vascular death (Major Secondary Endpoint 1); and the composite of stroke, non-CNS systemic embolism, MI, and vascular death (Major Secondary Endpoint 2).</p> <p>Other secondary efficacy endpoints included: individual components of the composite primary and major secondary efficacy endpoints; disabling stroke; and all-cause mortality.</p> <p><u>Safety:</u></p> <p>The principal safety endpoint was the composite of major and non-major clinically relevant bleeding events. Safety was also assessed by evaluation of AEs including bleeding events, clinical laboratory tests, electrocardiograms (ECGs), vital signs, and physical examinations.</p>
Statistical Methods:	<p><u>Efficacy (Primary):</u></p> <p>The primary efficacy endpoint was the composite of stroke and non-CNS systemic embolism. Based on time from randomization to the first occurrence of a primary efficacy endpoint event, the objective of the primary efficacy analysis was to establish that rivaroxaban is non-inferior to warfarin by a non-inferiority margin of 1.46 in terms of risk</p>

(hazard) ratio. The non-inferiority hypothesis was tested at a 1-sided significance level of 0.025 based on on-treatment data from the per protocol population. As an operationally equivalent procedure to the above testing at a 1-sided significance level of 0.025, a 2-sided 95% confidence interval (CI) for the risk (hazard) ratio (rivaroxaban/warfarin) was constructed using the (non-stratified) Cox Proportional Hazards model with treatment as a covariate. If the upper limit of this 2-sided confidence interval was below the non-inferiority margin of 1.46, then non-inferiority of the study drug could be declared. To assess the robustness of the non-inferiority conclusion on the primary efficacy endpoint from the primary efficacy analysis, supportive (sensitivity) analyses were performed. As the key supportive efficacy analysis for non-inferiority, time from randomization to the first occurrence of the primary efficacy endpoint was analyzed using the same approach as in the primary efficacy analysis based on the on-treatment safety analysis set. The 2-sided 95% confidence interval for the hazard ratio (rivaroxaban/warfarin) was provided. Additional supportive analyses for non-inferiority on the primary per protocol population were performed using a stratified Cox Proportional Hazards model with treatment as a covariate to examine the upper 95% CI for the risk ratio (rivaroxaban/warfarin). Cumulative event rates of the primary efficacy endpoint over time were estimated using the Kaplan-Meier method. Estimates and 95% CIs for the relative risks of rivaroxaban versus warfarin at fixed times were provided. As the primary efficacy analysis for superiority, time from randomization to the first occurrence of the primary efficacy endpoint was analyzed using the same approach as in the primary efficacy analysis based on on-treatment data from the safety population. As a key supportive efficacy analysis for superiority, time from randomization to the first occurrence of the primary efficacy endpoint was analyzed using the same approach as in the primary efficacy analysis based on all data up to the follow-up visit from the intent-to-treat population. To control the family-wise type I error rate, the closed testing procedure was conducted in the following specific order. Each individual test in the multiple testing procedure (Figure 1) was performed at a 2-sided significance level of 0.05. If an individual test during any step was not statistically significant, later tests were not to be declared statistically significant.

Figure 1: Multiple testing procedures



Efficacy (Secondary):

The hypotheses of superiority on major secondary efficacy endpoints 1 and 2 of rivaroxaban over warfarin were tested at a 1-sided significance level of 0.025 based on on-treatment data from the safety population.

Time from randomization to the first occurrence of a major secondary endpoint was analyzed using the same approach as in the primary efficacy analysis based on on-treatment data from the safety population. The 2-sided 95% confidence interval for hazard ratio (rivaroxaban/warfarin) was provided. If the upper limit of the 2-sided confidence interval is below 1, then superiority of rivaroxaban over warfarin was declared.

Safety:

The principal safety endpoint was the composite of major and non-major clinically relevant bleeding events. The hypothesis of superiority on the principal safety endpoint of rivaroxaban over warfarin was tested at a 1-sided significance level of 0.025 based on on-treatment data from the safety population. Time from the first study medication administration to the first occurrence of the principal safety endpoint was analyzed using the same approach as in the primary efficacy analysis based on on-treatment data from the safety population. The 2-sided 95% confidence interval for hazard ratio (rivaroxaban/warfarin) was provided. If the upper limit of the 2-sided confidence interval was below 1, then superiority on the principal safety endpoint of rivaroxaban over warfarin was declared. The model assumptions made in the principal safety analysis were assessed using the same approaches as those in the primary efficacy analysis.

Number of Subjects:

The total number of randomized subjects for this study was planned to be approximately 14,000 and could have been increased to a maximum of 16,000 subjects if needed. In total, 17,232 screenings for study eligibility occurred and 14,264 unique subjects were randomly assigned to treatment with either rivaroxaban or warfarin (Table 1).

Table 1: Summary of analysis sets

Subject Status	Rivaroxaban (N=7133) n (%)	Warfarin (N=7136) n (%)	Total (N=14269) n (%)
ITT	7131 (99.97)	7133 (99.96)	14264 (99.96)
Safety	7111 (99.69)	7125 (99.85)	14236 (99.77)
Per-Protocol	7008 (98.25)	7046 (98.74)	14054 (98.49)

Note: Percentages calculated with the number of randomized subjects in each group as denominator.
Note: ITT: all randomized unique subjects.
Note: Safety: all ITT subjects who take at least 1 dose of study medication after randomization during the double-blind treatment period.
Note: Per-protocol: all ITT subjects excluding those who have specific pre-defined major protocol deviations.
NOTE: Data from Site 042012 was not included in the final analyses of efficacy.
trub001gd.rtf generated by rsub_analset.sas_02NOV2010 16:00

Study Results

Results Summary — Subject Disposition and Baseline

Among the 14,236 subjects in the safety population, a total of 12,064 (84.74%) subjects completed the study (6,065 rivaroxaban and 6,029 warfarin). A subject was defined as completing the study if the subject met one of the following conditions as of the site notification:

- Completed study: last contact with the subject (regardless of whether study drug was being taken at the time) was on or after the site notification date.
- Completed study receiving assigned study drug: last dose of assigned study drug was on or after the site notification date.
- Completed study off assigned study drug: the subject had permanently discontinued study drug before the site notification date but last contact was on or after the site notification date.

The total number of subjects who permanently discontinued study drug was similar between the two treatment groups: 2,520 rivaroxaban subjects (35.44%) and 2,468 warfarin subjects (34.64%). The Kaplan-Meier estimated cumulative discontinuation rates at 1 and 2 years were 21.83% and 34.72% for rivaroxaban and 21.12% and 33.52% for warfarin, respectively.

The treatment groups were balanced with respect to demographic and baseline characteristics. The majority of subjects were male (60.32%), White (83.28%), and the mean age was 71 years (range: 25 to 97 years). The majority of subjects (62.42%) received prior therapy with VKA and 36.49% of subjects previously received acetylsalicylic acid therapy. One thousand eight hundred thirty-six (12.87%) subjects had at least 1 protocol deviation (13.36% rivaroxaban; 12.38% warfarin). The most common protocol deviation category was Category 4 - Received Excluded Concomitant Treatment (7.56% rivaroxaban group; 7.50% warfarin group). In addition, 2.76% of subjects entered the study but did not meet entry criteria (2.61% rivaroxaban group; 2.90% warfarin group). A total of 210 (1.47%) subjects (123 rivaroxaban; 87 warfarin) were excluded from the per protocol population.

Since the dosage of warfarin necessary to achieve a target INR of 2.5 (range: 2.0 to 3.0) can be highly variable, the determination of compliance between the treatment groups was achieved via the comparison of rivaroxaban to rivaroxaban placebo. The mean compliance was more than 98% for both treatment groups. More than 67% of the INRs measured were at an interval of 15 to 30 days (after Week 4) with 0.2% of INRs occurring greater than 60 days from the previous measurement. The mean time between INR measurements was 24.5 days. For the INR range of 2.0 to 3.0, the mean and median Time in Therapeutic Range (TTR) was 55.16% and 57.83%, respectively. For subjects randomly assigned to warfarin therapy, the TTR; (i.e., 2.0 to 3.0) was used as an indirect measure of treatment compliance. For the INR range of 1.8 to 3.2, the mean TTR was 70.18%. The overall mean percent of INR

measurements >5.0 was 1.03%; the overall mean percent of INR measurements <1.5 was 8.47%. Subjects who were VKA-naïve at baseline had poorer INR control and less time in therapeutic range.

Results Summary — Efficacy

The objective was, and results showed, that rivaroxaban was both non-inferior and superior to warfarin for the primary efficacy endpoint and that rivaroxaban was superior to warfarin for both major secondary efficacy endpoints 1 and 2 in the prespecified safety population/on treatment analyses. The table below presents the results of the time to the first occurrence of an efficacy endpoint for the endpoints included in the hierarchical testing.

The Figure 2 and Table 2 below provide the pre-specified, hierarchical testing strategy for efficacy analyses and the results for each test, respectively.

Figure 2: Hierarchical testing strategy for efficacy analyses

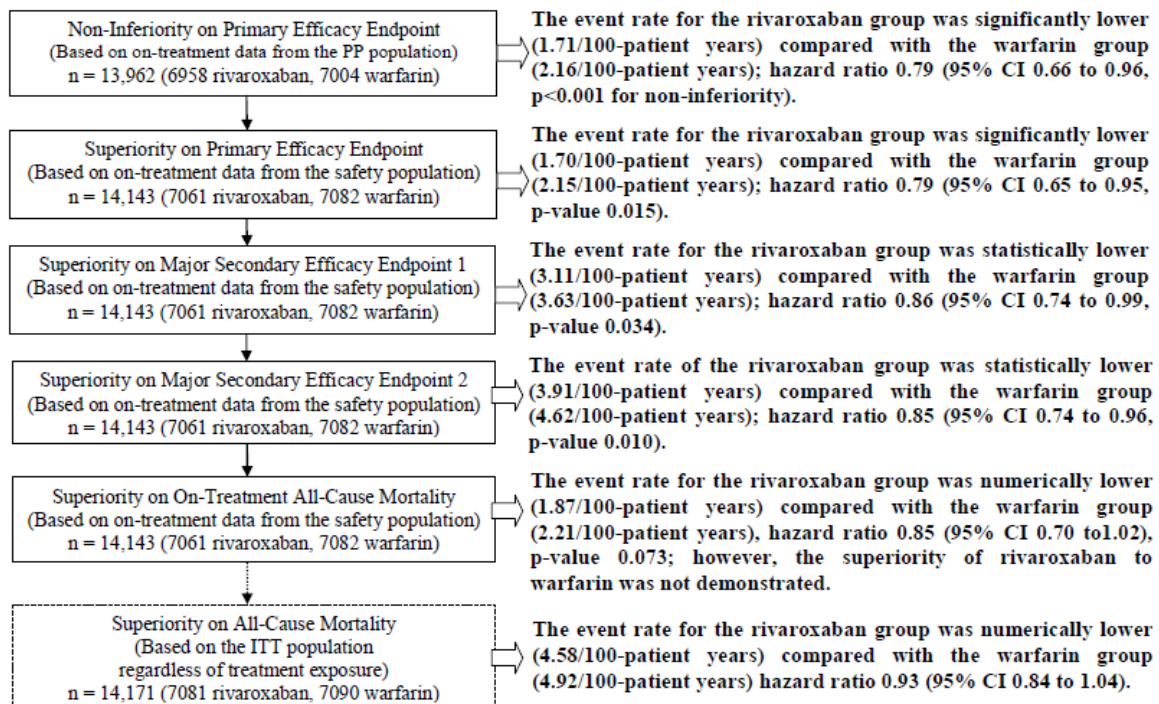


Table 2: Hierarchical testing - event rate, hazard ratio and 95% confidence interval for time to the first occurrence of efficacy endpoints

Population / Data Scope - Analysis - Endpoint	----- Rivaroxaban -----		----- Warfarin -----		Rivaroxaban vs. Warfarin Hazard Ratio (95% CI)	p-value
	n/N	Event Rate (100 pt-yr)	n/N	Event Rate (100 Pt-yr)		
Per Protocol/on-treatment - Non-inferiority						
- Primary Efficacy Endpoint	188/6958	1.71	241/7004	2.16	0.79 (0.66,0.96)	<0.001 ^{sa}
Safety/on-treatment - Superiority						
- Primary Efficacy Endpoint	189/7061	1.70	243/7082	2.15	0.79 (0.65,0.95)	0.015 ^{sb}
- Major Secondary Efficacy Endpoint 1	346/7061	3.11	410/7082	3.63	0.86 (0.74,0.99)	0.034 ^{sb}
- Major Secondary Efficacy Endpoint 2	433/7061	3.91	519/7082	4.62	0.85 (0.74,0.96)	0.010 ^{sb}
- All Cause Mortality	208/7061	1.87	250/7082	2.21	0.85 (0.70,1.02)	0.073 ^b
ITT/regardless of treatment exposure - Superiority						
- All Cause Mortality	621/7081	4.58	667/7090	4.92	0.93 (0.84,1.04)	0.204 ^b
<p>Note: Primary Efficacy Endpoint is the composite of stroke and non-CNS systemic embolism.</p> <p>Note: Major Secondary Efficacy Endpoint 1 is the composite of stroke, non-CNS embolism, and vascular death.</p> <p>Note: Major Secondary Efficacy Endpoint 2 is the composite of stroke, non-CNS embolism, myocardial infarction and vascular death</p> <p>Note: Event Rate 100 pt-yr: number of events per 100 patient years of follow up.</p> <p>Note: On treatment is the period between the date of the first double-blind study medication to the date of the last double-blind study medication administration plus 2 days.</p> <p>Note: Regardless of treatment exposure is the period of time from the date of the first double-blind study medication up to and including the Follow-up Visit for subjects who completed the study and data up to and including the last study contact for those who prematurely discontinued.</p> <p>Note: Hazard Ratio (95% CI) and p-value from the Cox proportional hazard model with treatment as a covariate.</p> <p>^a p-value (one-sided) for non-inferiority of rivaroxaban versus warfarin by a non-inferiority margin of 1.46 in hazard ratio.</p> <p>^b p-value (two-sided) for superiority of rivaroxaban versus warfarin in hazard ratio.</p> <p>^c Statistically significant at 0.025 (one-sided) for non-inferiority and 0.05 (two-sided) for superiority.</p> <p>Note: Per Protocol, safety and ITT refer to per protocol, safety, and ITT excluding site 042012.</p>						

Other secondary efficacy analyses demonstrated that there were consistently fewer events, strokes, non-CNS systemic embolisms, vascular deaths, and MIs observed for the rivaroxaban group compared with the warfarin group.

Sensitivity analyses demonstrated a consistent treatment effect for all populations. Additionally, the treatment effects were consistent across subgroups.

Results Summary — Safety

The incidence of CEC-adjudicated bleeding events was comparable for the principal safety endpoint (20.74% for rivaroxaban and 20.34% for warfarin) and there was no statistically significant difference between the treatment groups with a hazard ratio of 1.03 (95% CI: 0.96 to 1.11, p = 0.442). The bleeding event rates for the principal safety endpoint were comparable between the treatment groups (14.91/100 patient-years rivaroxaban, 14.52/100 patient-years warfarin) as were those for the major (3.60/100 patient-years rivaroxaban, 3.45/100 patient-years warfarin) and non-major clinically relevant (11.80/100 patient-years rivaroxaban, 11.37/100 patient-years warfarin) bleeding events separately. As the bleeding rates were similar between the rivaroxaban and warfarin treatment groups, the principal safety objective was not met. The event rate hazard ratio for the time to the first occurrence of bleeding events while on treatment is presented in the Table 3 below.

Table 3: Hazard ratios and 95% confidence intervals for time to the first occurrence of bleeding events (adjudicated by CEC) while on treatment (up to last dose plus 2 days)

Parameter	----- Rivaroxaban -----		----- Warfarin -----		---- Rivaroxaban vs. Warfarin ----	
	N= 7111 n (%)	Event Rate (100 Pt-yr)	N= 7125 n (%)	Event Rate (100 Pt-yr)	Hazard Ratio (95% CI)	p-value
Principal Safety Endpoint(a)	1475 (20.74)	14.91	1449 (20.34)	14.52	1.03 (0.96,1.11)	0.442
Major	395 (5.55)	3.60	386 (5.42)	3.45	1.04 (0.90,1.20)	0.576
Hemoglobin Hematocrit Drop	305 (4.29)	2.77	254 (3.56)	2.26	1.22 (1.03,1.44)	0.019*
Transfusion	183 (2.57)	1.65	149 (2.09)	1.32	1.25 (1.01,1.55)	0.044*
Critical Organ Bleeding(b)	91 (1.28)	0.82	133 (1.87)	1.18	0.69 (0.53,0.91)	0.007*
Death	27 (0.38)	0.24	55 (0.77)	0.48	0.50 (0.31,0.79)	0.003*
Non-major Clinically Relevant	1185 (16.66)	11.80	1151 (16.15)	11.37	1.04 (0.96,1.13)	0.345
Minimal	258 (3.63)	2.35	226 (3.17)	2.03	1.16 (0.97,1.39)	0.102

Note: (a) Principal Safety Endpoint is the composite of Major and Non-Major clinically relevant bleeding event.

Note: (b) Critical organ bleeding are cases where CEC bleeding site=intracranial, intraspinal, intraocular, pericardial, intra-articular, intramuscular with compartment syndrome or retroperitoneal.

Note: Minimal events are not included in the principal safety endpoint.

Note: Hazard ratio (95% CI) and p-value from Cox proportional hazard model with treatment group as a covariate.

Note: p-value (two-sided) for superiority of Rivaroxaban versus Warfarin in hazard ratio.

Note: All analysis are based on the time to the first event.

Note: Hemoglobin hematocrit drop = a fall in hemoglobin of 2 g/dL or more.

Note: Transfusion = a transfusion of 2 or more units of packed red blood cells or whole blood.

Note: * Statistically significant at nominal 0.05 (two-sided).

taeb002hbt.rtf generated by rbl07.sas, 02NOV2010 15:48

An overall summary of investigator-reported AEs is provided in Table 4.

Table 4: Summary of adverse events

	Rivaroxaban (N=7111) n(%)	Warfarin (N=7125) n(%)	Rivaroxaban Minus Warfarin Diff (%)	95% CI(%) ^a
All Adverse Events				
Post Baseline Adverse Events	5857 (82.37)	5858 (82.22)	0.15	(-1.11, 1.40)
Treatment-emergent Adverse Events	5791 (81.44)	5810 (81.54)	-0.11	(-1.38, 1.17)
Adverse Events with Onset > 2 Days from Stop of Study Med	863 (12.14)	711 (9.98)	2.16	(1.13, 3.19)
Serious Adverse Events	2649 (37.25)	2720 (38.18)	-0.92	(-2.52, 0.67)
Post Baseline Serious Adverse Events	2635 (37.06)	2708 (38.01)	-0.95	(-2.54, 0.64)
Treatment-emergent Serious Adverse Events	2489 (35.00)	2598 (36.46)	-1.46	(-3.04, 0.11)
Serious Adverse Events with Onset > 2 Days from Stop of Study Med	421 (5.92)	364 (5.11)	0.81	(0.06, 1.56)
Post Baseline Adverse Events Leading to Permanent Study Drug Discontinuation	1118 (15.72)	1082 (15.19)	0.54	(-0.65, 1.72)
Adverse Events with Outcome of Death	446 (6.27)	512 (7.19)	-0.91	(-1.74, -0.09)
All Non-bleeding Adverse Events				
Non-bleeding Post Baseline Adverse Events	5561 (78.20)	5584 (78.37)	-0.17	(-1.52, 1.19)
Non-bleeding Treatment-emergent Adverse Events	5479 (77.05)	5525 (77.54)	-0.49	(-1.87, 0.88)
Non-bleeding Adverse Events with Onset > 2 Days from Stop of Study Med	744 (10.46)	645 (9.05)	1.41	(0.44, 2.38)
Non-bleeding Serious Adverse Events	2406 (33.83)	2485 (34.88)	-1.04	(-2.60, 0.52)
Non-bleeding Post Baseline Serious Adverse Events	2392 (33.64)	2471 (34.68)	-1.04	(-2.60, 0.52)
Non-bleeding Treatment-emergent Serious Adverse Events	2243 (31.54)	2348 (32.95)	-1.41	(-2.95, 0.12)
Non-bleeding Serious Adverse Events with Onset > 2 Days from Stop of Study Med	383 (5.39)	340 (4.77)	0.61	(-0.11, 1.34)
Non-bleeding Post Baseline Adverse Events Leading to Permanent Study Drug Discontinuation	830 (11.67)	832 (11.68)	-0.01	(-1.06, 1.05)
Non-bleeding Adverse Events with Outcome of Death	418 (5.88)	450 (6.32)	-0.44	(-1.22, 0.35)
All Bleeding Adverse Events				
Bleeding Post Baseline Adverse Events	2403 (33.79)	2321 (32.58)	1.22	(-0.33, 2.76)
Bleeding Treatment-emergent Adverse Events	2298 (32.32)	2256 (31.66)	0.65	(-0.88, 2.19)
Bleeding Adverse Events with Onset > 2 Days from Stop of Study Med	209 (2.94)	144 (2.02)	0.92	(0.41, 1.43)
Bleeding Serious Adverse Events	571 (8.03)	536 (7.52)	0.51	(-0.37, 1.39)
Bleeding Post Baseline Serious Adverse Events	569 (8.00)	536 (7.52)	0.48	(-0.40, 1.36)
Bleeding Treatment-emergent Serious Adverse Events	515 (7.24)	488 (6.85)	0.39	(-0.45, 1.23)
Bleeding Serious Adverse Events with Onset > 2 Days from Stop of Study Med	60 (0.84)	56 (0.79)	0.06	(-0.24, 0.35)
Bleeding Post Baseline Adverse Events Leading to Permanent Study Drug Discontinuation	322 (4.53)	286 (4.01)	0.51	(-0.15, 1.18)
Bleeding Adverse Events with Outcome of Death	31 (0.44)	67 (0.94)	-0.50	(-0.78, -0.23)

Note: Bleeding adverse events are selected by using the Haemorrhages SMQ Excluding Lab Terms. Those unselected are non-bleeding adverse events.

Note: Treatment-Emergent: events that start on or after the first dose of study medication and up to 2 days after the last dose of study medication.

Note: AE with outcome of death: Subject is only included once but may have had more than one adverse event with an outcome of death.

Note: Subject is only counted once in the first section on all Adverse Events, but may be counted in both bleeding and non bleeding adverse event sections.

^a Estimate and 95% confidence interval for the difference in incidence proportion between the Rivaroxaban and Warfarin

(Rivaroxaban - Warfarin) will be based on asymptotic methods for a single 2x2 table. The confidence interval will be calculated

if there are at least 5 events (both treatment groups combined) and at least 1 event in each treatment group.

Overall, the incidence and types of AEs were similar between the treatment groups although more subjects in the rivaroxaban group had epistaxis compared with warfarin (10.14% versus 8.55%, respectively). The most frequent AEs for rivaroxaban were epistaxis (10.14%), peripheral edema (6.12%), and dizziness (6.09%) and for warfarin were epistaxis (8.55%), nasopharyngitis (6.39%), and dizziness (6.30%) based on the rivaroxaban group. Investigator-reported treatment-emergent serious adverse events (non-bleeding and bleeding) based on the rivaroxaban group were reported in 2489 (35.00%) rivaroxaban subjects and 2598 (36.46%) warfarin subjects. The incidence of AEs resulting in permanent discontinuation of study drug was 15.72% in the rivaroxaban group and 15.19% in the warfarin group. The most commonly reported AE leading to premature discontinuation was sudden death in both treatment groups.

All deaths were adjudicated by the CEC. There were 800 (5.62%) deaths (CEC adjudicated) that occurred during the serious adverse event (SAE) reporting period (i.e., first dose to last dose plus 30 days). As expected, there were more vascular (4.13%) than non-vascular (1.10%) deaths. The most common vascular etiologies included sudden or unwitnessed death, congestive heart failure/cardiogenic shock, intracranial hemorrhage, non-hemorrhagic stroke and myocardial infarction. Overall, there were fewer deaths in the rivaroxaban-treated subjects compared with the warfarin-treated subjects with the biggest difference seen in vascular deaths.

Treatment-emergent adverse events (TEAEs) of special interest were also reviewed using a combination of Standardized Medical Dictionary for Regulatory Activities (MedDRA) query (SMQs) and/or laboratory results. AEs of special interest included bleeding events, hepatic events, pancreatitis, thrombocytopenia, acute renal failure, and hypersensitivity reactions. The AEs and laboratory results were generally well balanced between both treatment groups suggesting no likely causal relationship between rivaroxaban and the above AEs. There were no liver transplants or liver-related deaths associated with study drug observed in this study. Alanine transaminase (ALT) elevations were balanced between the rivaroxaban and warfarin groups at all thresholds. In each treatment group, 203 subjects (2.9%) had central laboratory post baseline ALT values > 3x upper limit of normal (ULN). Balance between treatment groups was also seen at higher ALT levels of >5x, 8x, 10x and 20x ULN as well as at all thresholds for treatment emergent values. Hazard ratios across all ALT thresholds were between 0.62 and 1.07 with all confidence intervals including 1. Combined cases of ALT >3x ULN with total bilirubin >2x ULN identified using both central and local laboratory data were also balanced between the rivaroxaban and warfarin treatment groups (e.g., combined concurrent and/or non-concurrent ALT with total bilirubin rivaroxaban n=33, warfarin n=35; hazard ratio 0.96, 95% CI 0.59 to 1.54). There were no Hepatic Event Assessment Committee (HEAC) cases considered definitely related to study drug by any reviewer. The total number of cases sent for HEAC review (rivaroxaban 75, warfarin 76) and the number for each individual HEAC criterion were balanced between the treatment groups. All categories of hepatic disorder AEs, including SAEs and events leading to permanent study drug discontinuation, were comparable between the 2 treatment groups after excluding events in the sub-search SMQ Liver related coagulation and bleeding disturbances.

Conclusion(s)			
<ul style="list-style-type: none"> • In this study, rivaroxaban was demonstrated to be non-inferior to warfarin in the prevention of stroke and non-CNS systemic embolism. • In the protocol prespecified safety population/on-treatment, rivaroxaban was statistically superior to warfarin in the prevention of stroke and non-CNS systemic embolism (HR: 0.79 95%, CI: 0.66, 0.96; p-value: 0.015); sensitivity analyses in other populations demonstrated a consistent treatment effect. • Efficacy was driven by significant reductions in hemorrhagic stroke and non-CNS systemic embolism. • Major secondary efficacy endpoints, consisting of a composite of stroke, non-CNS systemic embolism, and vascular death, or a composite of stroke, non-CNS systemic embolism, MI, and vascular death, both showed statistically significant reductions compared to warfarin. • Rates of the composite of major and clinically relevant non-major bleeding were comparable across treatment groups. • Treatment with rivaroxaban resulted in more transfusions and 2 g/dL decreases in hemoglobin, less critical organ bleeding (including intracranial hemorrhage) and fatal bleeding compared to warfarin. • The overall liver safety profile of rivaroxaban was comparable to warfarin in this study, with no evidence of imbalance in laboratory parameters or hepatic AEs. 			
Publication(s):	<p>The Executive Steering Committee, on behalf of the ROCKET AF Study Investigators. Rivaroxaban- once daily, oral, direct factor Xa inhibition compared with vitamin K antagonism for prevention of stroke and embolism trial in atrial fibrillation: Rationale and design of the ROCKET AF study. Am Heart J 2010;159(3):340-347</p> <p>Patel MR, Mahaffey KW, Garg J, Pan G, Singer DE, Hacke W, et al. Rivaroxaban versus Warfarin in Nonvalvular atrial fibrillation. NEJM 2011;365 (10):883-891.</p>		
Date Created or Date Last Updated:	12 APR 2012	Date of Clinical Study Report:	24 DEC 2010

Investigational Site List

Marketing Authorization Holder in Germany	
Name	Bayer Pharma AG
Postal Address	D-13342 Berlin Deutschland
Sponsor in Germany (if applicable)	
Legal Entity Name	Bayer HealthCare AG
Postal Address	D-51368 Leverkusen, Germany

List of Investigational Sites					
No	Facility Name	Street	ZIP Code	City	Country
1	Centro de Investigaciones Clínicas del Litoral	Rivadavia 3363	3000	Santa Fe	ARGENTINA
2	Centro de Investigación Médica Lanús	Tucumán 1314	B1824KAJ	Lanús	ARGENTINA
3	Centro de Salud Norte Olivos	Echeverría 3150	B1605DSX	Munro	ARGENTINA
4	Centro Integral Cardiovascular	Mitre 220	S2000COD	Rosario	ARGENTINA
5	Centro Modelo de Cardiología	Laprida 544	T4000IFL	San Miguel de Tucumán	ARGENTINA
6	Centro Privado de Cardiología	Rivadavia 550	4000	Tucumán	ARGENTINA
7	Clínica Chutró	Colón 788	5000	Córdoba	ARGENTINA
8	Clínica de Fracturas y Ortopedia	Av. Independencia 1475	7600	Mar del Plata	ARGENTINA
9	Clínica DIM	Belgrano 136, 5° Piso	B1740ETD	Ramos Mejía	ARGENTINA

Appendix to Clinical Study Synopsis for study 11630

10	Clínica Espora	Cardiología Av. Espora 645	1846	Adroque	ARGENTINA
11	Complejo Médico de la PFA Churruca Visca	Uspallata 3400	C1437JCP	Buenos Aires	ARGENTINA
12	Corporación Médica de General San Martín	Matheu 4071	1650	San Martín	ARGENTINA
13	Framingham Centro Médico	Calle 9 N° 431	B1902COS	La Plata	ARGENTINA
14	Fundación Favalaro	Departamento de Neumología Belgrano 1782, 7th floor.	C1093AAS	Buenos Aires	ARGENTINA
15	Fundación Galicia Salud	Av. Belgrano 2199	C1094AAD	Buenos Aires	ARGENTINA
16	Fundacion para la Inv., Doc. y Asist. "Marcelino Rusculleda"	Practice office Independencia 387		Cordoba	ARGENTINA
17	Grupo Colaborativo Rosario	Rioja 2926	2000	Rosario	ARGENTINA
18	Grupo Médico Alem	Cardiología Alem 134	B1642DCD	San Isidro	ARGENTINA
19	Hospital Argerich	Cardiology Department Av. Almirante Brown 240 Capital Federal	C1145ADP	Buenos Aires	ARGENTINA
20	Hospital Córdoba	Av. Patria 656	5000	Córdoba	ARGENTINA
21	Hospital Interzonal General de Agudos Eva Perón	Avda. Ricardo Balbín 3200	1650	San Martín	ARGENTINA
22	Hospital Italiano de Córdoba	Sarmiento 1595	5000	Córdoba	ARGENTINA

Appendix to Clinical Study Synopsis for study 11630

23	Hospital Italiano de la Plata	Avda 51 entre 29 y 30	1900	La Plata	ARGENTINA
24	Hospital Italiano Garibaldi de Rosario	Servicio de Cardiología Virasoro 1249	2000	Rosario	ARGENTINA
25	Hospital Privado de Córdoba	Departamento de Infectología Hospital Privado de Córdoba Naciones Unidas 346 Barrio Parque Velez Sarfield	X5016KEH	Córdoba	ARGENTINA
26	Hospital Publico de Gestion Descentralizada San Bernardo	José Tobías 69	A4406CLA	Salta	ARGENTINA
27	Hospital Santojanni	Pilar 950	C1408INH	Buenos Aires	ARGENTINA
28	ICC-Mar del Plata	Av. Colón 3364	B7600FZN	Mar del Plata	ARGENTINA
29	Inst. de Cardiología de Corrientes Juana Francisca Cabral	Simón Bolívar 1334	3400	Corrientes	ARGENTINA
30	Instituto Cardiovascular de Buenos Aires	Blanco Encalada 1543	C1428DCO	Buenos Aires	ARGENTINA
31	Instituto de Cardiología	Av. Mitre 760	4000	San Miguel de Tucuman	ARGENTINA
32	Instituto de Investigaciones Clinicas Bahia Blanca	Avda Colon 305	8000	Bahía Blanca	ARGENTINA
33	Instituto de Investigaciones Clinicas de Quilmes	Sarmiento 315	1878	Quilmes	ARGENTINA
34	Instituto de Investigaciones Clinicas de Rosario	Paraguay 160	2000	Rosario	ARGENTINA

Appendix to Clinical Study Synopsis for study 11630

35	Instituto del Corazón	La Rioja 881	5000	Córdoba	ARGENTINA
36	Instituto Médico de Asistencia e Investigación	French 2673	C1425AWC	Buenos Aires	ARGENTINA
37	Instituto Médico Especializado	Instituto Médico Especializado Av. Santa Fé 3312, 6ºD	1425	Buenos Aires (Capital Federal)	ARGENTINA
38	Instituto Médico Platense	Boulevard 51 Nº 315	B1900AVG	La Plata	ARGENTINA
39	Policlínico Bancario	Pulmonar Lab. Av. Gaona 2197	1416	Buenos Aires (Capital Federal)	ARGENTINA
40	Policlínico Modelo Cipolletti	San Martín Y Libertad		Cipolletti	ARGENTINA
41	Sanatorio Británico	Pneumology Dept. Paraguay 40	2000	Rosario	ARGENTINA
42	Sanatorio de La Providencia	Tucumán 1863	C1050AAK	Buenos Aires	ARGENTINA
43	Sanatorio Parque Privado	San Jerónimo 3115	5000	Córdoba	ARGENTINA
44	Sanatorio Prof. Itoiz	Clinica Médica Alsina 174	B1870CID	Avellaneda	ARGENTINA
45	Australian Clinical Research Centre	Australian Clinical Research Centre The Kiora Centre Suite 203, 29 Kiora Road	2228	Miranda	AUSTRALIA
46	Box Hill Hospital	16 Arnold Street Box Hill	3128	Melbourne	AUSTRALIA
47	Caboolture Clinical Research Centre	1st Floor 17 Hasking Street	4501	Caboolture	AUSTRALIA
48	Cairns Base Hospital	The Esplanade	4870	Cairns	AUSTRALIA

Appendix to Clinical Study Synopsis for study 11630

49	Cardiology Department (9C)	108 Nerang St	4215	South Port	AUSTRALIA
50	Coffs Harbour Health Campus	345 Pacific Highway	2450	Coffs Harbour	AUSTRALIA
51	Flinders Medical Centre	Cardiology Research 1 Flinders Drive Bedford Park	5042	Adelaide	AUSTRALIA
52	Geelong Hospital	3rd floor Kardinia House,Cnr Ryrie & Bellerine Streets	3220	Geelong	AUSTRALIA
53	Gosford Hospital	Holden Street	2250	Gosford	AUSTRALIA
54	John Hunter Hospital	Lookout Road	2305	New Lambton Heights	AUSTRALIA
55	Joondalup Cardiovascular Trials Foundation Inc.	Unit 2, 14 Reid Promenade	6027	Joondalup	AUSTRALIA
56	Lismore Base Hospital	Cancer Care & Haematology Unit Lismore Base Hospital Uralba St	2480	Lismore	AUSTRALIA
57	Monash Medical Centre	246 Clayton Road	3168	Clayton	AUSTRALIA
58	National Stroke Research Institute	300 Waterdale Road, Level 1 Neurosciences Building	3081	Heidelberg Heights	AUSTRALIA
59	Nepean Hospital	Cnr Sommerset & Derby Sts (PO Box 63) Penrith	2751	Sydney	AUSTRALIA

Appendix to Clinical Study Synopsis for study 11630

60	Peninsula Specialist Centre	Suite 11 Peninsula Specialist Centre Cnr George & Florence Streets Kippa-Ring	4021	Redcliffe	AUSTRALIA
61	Reservoir Private Hospital	73 Pine St	3073	Reservoir	AUSTRALIA
62	Rivercity Hospital Research Centre	401 Milton Rd	4066	Auchenflower	AUSTRALIA
63	Royal Brisbane and Women's Hospital	Level 3 - Dr James Mayne Building Royal Brisbane & Women's Hospital Cnr Butterfield St and Bowen Bridge Rd Herston	4029	Brisbane	AUSTRALIA
64	Royal Hobart Hospital	Liverpool Street	7000	Hobart	AUSTRALIA
65	Royal Prince Alfred Hospital	Missenden Road	2050	Camperdown	AUSTRALIA
66	Sir Charles Gairdner Hospital	Verdun Street	6009	Nedlands	AUSTRALIA
67	The Alfred Hospital	Commercial Road	3181	Prahran	AUSTRALIA
68	The Avenue Cardiovascular Centre	42 The Avenue Windsor	3181	Melbourne	AUSTRALIA
69	The Canberra Hospital	Yamba Drive	2605	Garran	AUSTRALIA
70	The Prince Charles Hospital	Rode Road,	4032	Chermside	AUSTRALIA
71	The Wesley Hospital	451 Coronation Drive	4066	Auchenflower	AUSTRALIA

Appendix to Clinical Study Synopsis for study 11630

72	University of Queensland, Princess Alexandra Hospital	Ipswich Road	4102	Woollongabba	AUSTRALIA
73	Western Medical Centre	Gordon Street Footscray	3011	Melbourne	AUSTRALIA
74	Allgemeines Krankenhaus der Stadt Wien Universitätskliniken	Währinger Gürtel 18-20	1090	Wien	AUSTRIA
75	Allgemeines Krankenhaus der Stadt Wien Universitätskliniken	Univ.-Klinik für Innere Medizin II Klinische Abteilung für Kardiologie Währinger Gürtel 18-20	1090	Wien	AUSTRIA
76	Hanusch-Krankenhaus Wien	Heinrich-Collin-Straße 30	1140	Wien	AUSTRIA
77	Krankenhaus der Barmherzigen Brüder	Neurologische Abteilung Große Mohrengasse 9	1021	Wien	AUSTRIA
78	Landeskrankenhaus Donauregion Tulln	Alter Ziegelweg 10	3430	Tulln	AUSTRIA
79	Landeskrankenhaus Feldkirch	Innere Medizin Carinagasse 47	6807	Feldkirch	AUSTRIA
80	Medizinische Universität Graz	Med. Universitätsklinik klin. Abteilung f. Angiologie Auenbruggerplatz 15	8036	Graz	AUSTRIA

Appendix to Clinical Study Synopsis for study 11630

81	Wilhelminenspital der Stadt Wien	3. Medizinische Abteilung mit Kardiologie Pavillon 29 Montlearstraße 37	1160	Wien	AUSTRIA
82	AZ Klina	AZ Klina Augstijnslei 100	2930	BRASSCHAAT	BELGIUM
83	AZ Maria Middelaes Campus Maria Middelaes	Campus Maria Middelaes Kortrijksesteenweg 1026	9000	GENT	BELGIUM
84	CH de Tubize-Nivelles	Site Nivelles Rue Samiette 1	1400	NIVELLES	BELGIUM
85	Clinique Sainte Elisabeth	Avenue De Fre 206	1180	UCCLE	BELGIUM
86	Clinique Saint-Jean/Kliniek Sint Jan	Boulevard du Jardin Botanique 32 Kruidtuinlaan	1000	BRUXELLES - BRUSSEL	BELGIUM
87	Clinique Saint-Pierre	Avenue Reine Fabiola 9	1340	OTTIGNIES	BELGIUM
88	CU Saint-Luc/UZ St-Luc	Avenue Hippocrate 10 Hippocrateslaan	1200	BRUXELLES - BRUSSEL	BELGIUM
89	Dr De Wolf	Broekstraat 28	3300	TIENEN	BELGIUM
90	H. Hartziekenhuis Mol	Dienst Cardiologie Gasthuisstraat 1	2400	MOL	BELGIUM
91	H.-Hartziekenhuis Roeselare-Menen	Campus Wilgenstraat Wilgenstraat 2	8800	ROESELARE	BELGIUM
92	Imeldaziekenhuis - St- Elisabethkliniek	Imeldalaan 9	2820	BONHEIDEN	BELGIUM
93	UZ Leuven Gasthuisberg	Herestraat 49	3000	LEUVEN	BELGIUM

Appendix to Clinical Study Synopsis for study 11630

94	05574	Av. Edmundo Pinheiro Abreu, 451 - Setor Bela Vista	74823-030	Goiania	BRAZIL
95	Casa de Saúde Santa Marcelina	R. Santa Marcelina, 177	08270-070	São Paulo	BRAZIL
96	Centro de Pesquisa Clínica do Brasil	SHIS Q I 09 - Centro Clínico do Lago - sala 305	71265 009	Brasília	BRAZIL
97	Centro de Prevenção e Tratamento	Rua Cláudio Manuel da Costa, 56 - Maria Izabel	017515 460	Marília	BRAZIL
98	Clínica Bastos Prestações de Serviços Médicos Ltda	Rua Bandeirantes, 660 - Cambuí	13024 011	Campinas	BRAZIL
99	Clínica de Exames Cardiológicos e Ecografia S/C Ltda	Av. Moreira e Silva, 951 - Farol	57021 500	Maceió	BRAZIL
100	Clínica Dr Nabil Ghorayeb	Rua Bom Pastor, 1163 - Ipiranga	04203 051	São Paulo	BRAZIL
101	Clínica Procardio Ltda	Rua Marechal Floriano Peixoto, 245 - sala 58	89010 500	Blumenau	BRAZIL
102	Faculdade de Ciências Médicas de Minas Gerais - FCMMG	Alameda Ezequiel Dias 275 2 andar	30130-110	Belo Horizonte	BRAZIL
103	Fundação Bahiana de Cardiologia	Rua das Hortências, 326 - Itaigara	41810 010	Salvador	BRAZIL
104	Fundação Centro Médico de Campinas	Rua Edilberto Luiz Pereira da Silva, 150	13083 190	Campinas	BRAZIL
105	Hospital Angelina Caron	Rodovia do Caqui, 1150 - KM 01 - Bairro Jardim Araçatuba	83430 000	Campina Grande do Sul	BRAZIL

Appendix to Clinical Study Synopsis for study 11630

106	Hospital das Clínicas da Faculdade de Medicina da USP	INCOR - Instituto do Coração do Hospital das Clínicas Av. Dr. Enéas de Carvalho Aguiar, 44	05403-000	Sao Paulo	BRAZIL
107	Hospital de Base da Fundação F M S J Rio Preto	Avenida Brigadeiro Faria Lima, 5544		São José do Rio Preto	BRAZIL
108	Hospital de Clínicas de Porto Alegre	Rua Ramiro Barcelos, 2350		Porto Alegre	BRAZIL
109	Hospital de Messejana	Unidade Transplante e Insuficiência Cardíaca Av. Frei Cirilo, 3480 - Messejana	60864 194	Fortaleza	BRAZIL
110	Hospital e Maternidade Brasil	Rua Coronel Fernando Prestes 1177 Vila Dora	09020 110	Santo André	BRAZIL
111	Hospital Mae de Deus	Rua Jose de Alencar, 286	90110-270	Porto Alegre	BRAZIL
112	Hospital Nossa Senhora da Conceicao	Rua Francisco Trein, 596 Cristo Redentor - Sala 2046B - 2º Andar	91350-200	Porto Alegre	BRAZIL
113	Hospital Pró-Cardíaco	Rua General Poldoro, 192 - Botafogo	22280 000	Rio de Janeiro	BRAZIL
114	Hospital Santa Cruz	Rua Santa Cruz, 398	04122 000	São Paulo	BRAZIL
115	Hospital Santa Rita	Praça Sete de Setembro, 285- Zona 4	87015 290	Maringa	BRAZIL
116	Hospital São Francisco de Assis	Rua Itamaracá, 535 - Concordia	31110 580	Belo Horizonte	BRAZIL

Appendix to Clinical Study Synopsis for study 11630

117	Hospital Sao Lucas da Pontificia Universidade Catolica do RS	Av. Ipiranga 6690	90619900	Porto Alegre	BRAZIL
118	Hospital Universitário Evangélico de Curitiba	Alameda Augusto Stelfeld 1908	80730-150	Curitiba	BRAZIL
119	Hospital Universitário Oswaldo Cruz	Rua Golveia de Barros, 236 - Santo Amaro	50100 130	Recife	BRAZIL
120	Hospital Universitário Pedro Ernesto	Av. Vinte e Oito de Setembro, 77 - Térreo - VI Isabel	20551-030	Rio de Janeiro	BRAZIL
121	Hospital Universitário UFMS	Rua Filinto Muller s/n - Campus Universitário	79080 190	Campo Grande	BRAZIL
122	Hospital Universitário Walter Cantídio	Rua Capitão Francisco Pedro, 1290	60430 370	Fortaleza	BRAZIL
123	Hosp. Português da Real Soc. Portuguesa de Beneficência	Avenida Princesa Isabel, 914	40144 900	Salvador	BRAZIL
124	Instituto Dante Pazzanese de Cardiologia	Av. Dante Pazzanese 500	04012-000	Sao Paulo	BRAZIL
125	Instituto do Coração de Marília	Av. Vicente Ferreira, 780	17515 000	Marília	BRAZIL
126	Instituto do Coração do Triângulo Mineiro	Rua Artur Bernardes, 239	38400 368	Uberlândia	BRAZIL
127	Instituto Estadual de Cardiologia	Rua Capitão Mor Roque Barreto, 65 - Bela Vista	01323 030	São Paulo	BRAZIL

Appendix to Clinical Study Synopsis for study 11630

128	Instituto Nacional de Cardiologia de Laranjeiras	Rua das Laranjeiras, 374 - Laranjeiras	22240006	Rio de Janeiro	BRAZIL
129	Istituto de Moléstias Cardiovasculares de Rio Preto	Rua Castelo D'Água, 3030 São José do Rio Preto	15015-210	São José do Rio Preto	BRAZIL
130	Núcleo de Pesquisa Clínica ICBS-PUCPR -Santa Casa Curitiba	Rua Rui Barbosa, 694	80010 030	Curitiba	BRAZIL
131	PUC Campinas - Hospital e Maternidade Celso Pierro	Rua John Boyd Dunlop, s/n Jd Ipaussurama	13059-900	Campinas	BRAZIL
132	Santa Casa de Misericórdia de Belo Horizonte	Avenida Francisco Sales, 1111 – MG	30150-221	Belo Horizonte	BRAZIL
133	Santa Casa de Misericordia de Porto Alegre	Rua Prof. Annes Dias 285	90470 340	Porto Alegre	BRAZIL
134	Via Médica Centro Clínico	Rua T 58 esquina com T 38-Setro Bueno, 315	74223 130	Goiania	BRAZIL
135	IV City Hospital-Sofia	Macedonia bd. 38	1606	Sofia	BULGARIA
136	Medical Institute - Ministry of Internal Affairs	79, Skobelev blvd	1606	Sofia	BULGARIA
137	MHAT Dr Stefan Cherkezov	1, Nish str	5000	Veliko Tarnovo	BULGARIA
138	MHAT Russe	Nezavisimost str 2	7002	Russe	BULGARIA
139	MHAT St Ekaterina	1st Internal ward 29, Hristo Botev blvd	6400	Dimitrovgrad	BULGARIA

Appendix to Clinical Study Synopsis for study 11630

140	MHAT St Panteleimont	Nikola Vaptzarov blvd 9	4000	Plovdiv	BULGARIA
141	MHAT Sveta Sofia	104 Bulgaria Blvd.	1330	Sofia	BULGARIA
142	MHAT Vita	5 Dragivista St.	1505	Sofia	BULGARIA
143	Military Medical Academy	3 Georgi Sofiiski blvd.	1431	Sofia	BULGARIA
144	NMTH Tsar Boris III	104 Maria Luisa Blvd.	1233	Sofia	BULGARIA
145	Tsaritsa Yoanna UMHAT	8, Byalo More Street	1527	Sofia	BULGARIA
146	Tsaritsa Yoanna UMHAT	8, Byalo More Street	1527	Sofia	BULGARIA
147	UMHAT Dr. Georgi Stranski	Georgi Kotchev str. 8A	5800	Pleven	BULGARIA
148	UMHAT "Sveti Georgi"	15A, Vasil Aprilov blvd.	4002	Plovdiv	BULGARIA
149	V MHAT	67-A Stoletov Blvd.	1233	Sofia	BULGARIA
150	AIM Health Group-Hillside	585 Montreal Road	K1K 4K4	Ottawa	CANADA
151	AIM Health Group-Listowel Clinic	172 Elizabeth Street East	N4W 2P4	Listowell	CANADA
152	AIM Health Group-Medical	235 North Centre Road Suite 302	N5X 4E7	London	CANADA
153	AIM Health Group-Merivale Clinic	1642 Merivale Road	K2G 4A1	Ottawa	CANADA
154	Alder Medical Centre	277 Evergreen Road	V9W 5Y4	Campbell River	CANADA
155	Alderwood Medical Clinic	811 Browns Line	M8W 3V7	Toronto	CANADA
156	Amica at Bayview	15 Barberry Place	M5K 1G9	Toronto	CANADA
157	Cambridge Cardiac Care, Inc.	150 Hespeler Road	N1R 6V6	Cambridge	CANADA

Appendix to Clinical Study Synopsis for study 11630

158	Cape Breton Health Care Complex	1482 George Street	B1P 1P3	Sydney	CANADA
159	Cardiology Consultants /Heart Health Institute	Bridgeland Medical Building 803 First Avenue NE Suite 203	T2E 7C5	Calgary	CANADA
160	Cardiology Research Associates	4040 Finch Avenue Suite 404	M1S 4V5	Scarborough	CANADA
161	Cardiology Services Group	274 Dundas Street East Suite 303	K8N 1E6	Belleville	CANADA
162	Cardiomatters Diagnostic Management, Inc.	330 Steeles Avenue West Unit 2	L4J 6W9	Thornhill	CANADA
163	Cardiomatters Diagnostic Management, Inc.	6633 Highway 7 East Suite 215	L3P 7P2	Markham	CANADA
164	Cardiomatters Diagnostic Management, Inc.	658 Danforth Avenue Suite 330	M4J 5B9	Toronto	CANADA
165	Centre Hospitalier Universitaire de Sherbrooke-Fleurimont	3001 - 12th Avenue Nord	J1H 5N4	Fleurimont	CANADA
166	Centre de Sante et des Services Sociaux de Jonquiere	2230 rue de L'Hopital	G7X 7X2	Jonquiere	CANADA
167	Centre Hospital Regional de Lanaudiere	1000 boul. Sainte-Anne	J6E 6J2	Saint-Charles Borromee	CANADA
168	Centre Medical Notre-Dame	1515 Notre-Dame	H8S 2E4	Lachine	CANADA
169	CHUM - Hopital Hotel-Dieu	Centre de Recherche 3850, rue Sainte-Urbain	H2W 1T8	Montreal	CANADA

Appendix to Clinical Study Synopsis for study 11630

170	Clinique Medicale Langelier	Complexe Le Baron 6058 rue Jean-Talon E.	H1S 3A9	St. Leonard	CANADA
171	C & L Research	238 Bertie Street Suite 7	L2A 1Z3	Fort Erie	CANADA
172	Co-Medica Research Network, Inc.	Courtice Health Centre 1450 Hwy. #2 (King St.E) Lower Level	L1E 3C3	Courtice	CANADA
173	Corunna Medical Research Centre	348 Lyndock Street	N0N 1G0	Corunna	CANADA
174	Corydon Medical Clinic	894 Corydon Avenue	R3M 0Y4	Winnipeg	CANADA
175	Don Valley Medical Associates	1333 Sheppard Avenue East Suite 144	M2J 1V1	North York	CANADA
176	Fraser Clinical Trials, Inc.	245 East Columbia Street Suite 106	V3L 3W4	New Westminster	CANADA
177	G.A. Research Associates, Ltd.	1798 Mountain Road Suite 206	E1G 1A7	Moncton	CANADA
178	Heritage Medical Centre	2 Wootten Way North	L3P 5T7	Markham	CANADA
179	Hopital Charles LeMoine	Centre de Recherche 3120 boul. Taschereau Suite E-315	J4V 2H1	Greenfield Park	CANADA
180	Hopital Hotel-Dieu de St. Jerome	Block-F 280 rue Montigny	J7Z 5T3	St. Jerome	CANADA
181	Hopital Laval	2725 chemin Ste-Foy	G1V 4G5	Ste-Foy	CANADA
182	Hopital Maisonneuve- Rosemont	5415 boul de L'Assomption Suite 295	H1T 2M4	Montreal	CANADA
183	Hydrostone Medical Centre	5521 Duffus Street	B3K 2M5	Halifax	CANADA

Appendix to Clinical Study Synopsis for study 11630

184	Innovative Cardiac Care, Inc.	335 Packham Avenue Suite 94	S7N 4S1	Saskatoon	CANADA
185	Islington Family Practice Centre	2930 Islington Avenue	M9L 2K5	North York	CANADA
186	JBN Medical Diagnostic Services, Inc.	2951 Walkers Line 3rd Floor	L7R 3X4	Burlington	CANADA
187	KGK Synergize Clinic	One London Place 225 Queens Avenue Suite 1440	N6A 5R8	London	CANADA
188	Leader Research & Health Services	95 Bayly Street West Suite 305	L1S 7K8	Ajax	CANADA
189	London Health Sciences Centre	Victoria Hospital Cardiac Fitness Institute 800 Commissioners Road East	N6A 4G5	London	CANADA
190	London Road Diagnostic Centre	481 London Road	N7T 4X3	Sarnia	CANADA
191	Manna Research	2291 Kipling Avenue Unit 117-B	M9W 4L6	Toronto	CANADA
192	Medical Arts Health Research Group	626 Main Street Suite 3	V2A 5C8	Penticton	CANADA
193	Merivale Cardiovascular Consultants	1370 Clyde Avenue Suite 201	K2G 3H8	Ottawa	CANADA
194	Misericordia Health Centre	Winnipeg Regional Health Authority 99 Cornish Avenue	R3C 1A2	Winnipeg	CANADA

Appendix to Clinical Study Synopsis for study 11630

195	Northgate Medical Clinic	Northern Clinical Trials 1500 Fisher Street Suite 201	P1B 2H3	North Bay	CANADA
196	Oakville Cardiologists, Inc.	690 Dorval Drive Suite 300-1	L6K 3W7	Oakville	CANADA
197	Oakville Cardiologists, Inc.	690 Dorval Drive Suite 300-1	L6K 3W7	Oakville	CANADA
198	Office of Dr. Alan Bell	2830 Keele Street 2nd Floor	M3M 3E5	Downsview	CANADA
199	Office of Dr. Alan Faiers, MD	916 Queen Street East	M4M 1J5	Toronto	CANADA
200	Office of Dr. Ali Najarali, MD	c/o Urszula Lamoureux 2 Kennedy Road South	L6W 3E1	Brampton	CANADA
201	Office of Dr. Andrew Dworak, MD	2493 Kennedy Road	M1T 3H3	Scarborough	CANADA
202	Office of Dr. Arthur Kushner, MD	1735 Kipling Avenue Unit 200	M9R 2Y8	Etobicoke	CANADA
203	Office of Dr. Ashwani Choudhry, MD	3530 Derry Road Suite 205	L4T 4E3	Mississauga	CANADA
204	Office of Dr. Bernard Goldberg, MD	209 Ellesmere Road Unit 1	M1R 4E2	Scarborough	CANADA
205	Office of Dr. Bharat Kalra, MD	North Scarborough Professional Bldg. 3443 Finch Avenue East Suite 404	M1W 2S1	Scarborough	CANADA
206	Office of Dr. Bruce J. Lubelsky, MD	1110 Sheppard Avenue E. Suite 209	M2K 2W1	North York	CANADA
207	Office of Dr. Chin Chung, MD	9 Madawaska Avenue Suite 103	M2M 2R1	North York	CANADA

Appendix to Clinical Study Synopsis for study 11630

208	Office of Dr. Christian Fortin, MD	44 av Argyle	J4P 2H4	Saint-Lambert	CANADA
209	Office of Dr. Daniel Ezekiel, MD	750 Broadway West Suite 1404	V5Z 1J4	Vancouver	CANADA
210	Office of Dr. David Borts, MD	164 Queen Street East Suite 104	L6V 1B4	Brampton	CANADA
211	Office of Dr. David Gould, MD	170 East Street Suite 204	P6A 3C6	Sault Ste. Marie	CANADA
212	Office of Dr. Derek Papastergiou, MD	520 University Avenue Suite 201	N2T 2Z6	Waterloo	CANADA
213	Office of Dr. Earl Teitelbaum, MD	4430 Bathurst Street Suite 402	M3H 3S3	North York	CANADA
214	Office of Dr. Eric Silver, MD	2 Duplex Avenue	M5P 2A3	Toronto	CANADA
215	Office of Dr. Frank Wong, MD	309 Commissioners Road West Unit C	N6J 1Y4	London	CANADA
216	Office of Dr. Gerald Rockman, MD	2560 Gerrard Street East Suite 202	M1N 1W8	Toronto	CANADA
217	Office of Dr. Gloria Meneses, MD	2642 Eglinton Avenue East	M1K 2S3	Scarborough	CANADA
218	Office of Dr. Gregory Gillis, MD	240 Wharncliffe Road North Suite 205	N6H 4P2	London	CANADA
219	Office of Dr. Gurcharan Syan, MD	430 Notre Dame Avenue	P3C 5K7	Sudbury	CANADA
220	Office of Dr. Hassan Bhamjee, MD	1657 Dundas Street East	N5W 3C6	London	CANADA
221	Office of Dr. Hyman Reisler, MD	Ellendale Medical Building 5845 ch de la Cote des Neiges Suite 390	H3S 1Z4	Montreal	CANADA

Appendix to Clinical Study Synopsis for study 11630

222	Office of Dr. Ira Bernstein, MD	960 Lawrence Avenue West Suite 502	M6A 3B5	North York	CANADA
223	Office of Dr. James Cha, MD	300 King Street West Suite 203	L1J 2K1	Oshawa	CANADA
224	Office of Dr. James Stockdill, MD	Landsdowne Professional Bldg. 1641 Hillside Avenue Suite 270	V8T 5G1	Victoria	CANADA
225	Office of Dr. James Vavougios, MD	245 Danforth Avenue Suite 202	M4K 1N2	Toronto	CANADA
226	Office of Dr. Jerome Lyons, MD	209 Ellesmere Road	M1R 4E2	Scarborough	CANADA
227	Office of Dr. Joanne Liutkus, MD	73 Water Street North Suite 601	N1R 7L6	Cambridge	CANADA
228	Office of Dr. John Mutrie, MD	1187 Fisher-Hallman Road	N2E 4H9	Kitchener	CANADA
229	Office of Dr. Joseph Kozak, MD	3101 Bloor Street West Suite 305	M8X 2W2	Etobicoke	CANADA
230	Office of Dr. Judit Korosi, MD	20611 Fraser Highway Suite 110	V3A 4G4	Langley	CANADA
231	Office of Dr. Mahesh Khurana, MD	1265 100th Street	S9A 0V6	North Battleford	CANADA
232	Office of Dr. Mahomed Dawood, MD	570 University Avenue East Suite 902	N2K 4P2	Waterloo	CANADA
233	Office of Dr. Margaret Bennett, MD	250 Lawrence Avenue West Suite 116	M5M 1B2	Toronto	CANADA
234	Office of Dr. Mario Andres, MD	800 Bathurst Street Suite 202	M5R 3M8	Toronto	CANADA
235	Office of Dr. Michael Jones, MD	1175 Cook Street Suite 107	V8V 4A1	Victoria	CANADA

Appendix to Clinical Study Synopsis for study 11630

236	Office of Dr. Ming-Tat Cheung, MD	1920 Weston Road Suite 205A	M9N 1W4	York	CANADA
237	Office of Dr. Nancy Abram, MD	4279 Hixon Street	L0R 1B0	Beamsville	CANADA
238	Office of Dr. Nigel Jagan, MD	1615 Dundas Street East Unit 206	L1N 2L1	Whitby	CANADA
239	Office of Dr. Paul Chong, MD	9350 Yonge Street Suite 203	L4C 5G2	Richmond Hill	CANADA
240	Office of Dr. Raja Chehayeb, MD	2944 Taschereau Suite 103-A	J4V 2G8	Greenfield Park	CANADA
241	Office of Dr. Robert Luton, MD	140 Oxford Street East Suite 101	N6A 5R9	London	CANADA
242	Office of Dr. Ronald Collette, MD	3825 Sunset Street Suite 207	V5G 1T4	Burnaby	CANADA
243	Office of Dr. Saul Vizel, MD	Cardiac Research Office 715 Coronation Boulevard Suite 1	N1R 7R1	Cambridge	CANADA
244	Office of Dr. Shahin Jaffer, MD	4977 Trenant Street Suite 230	V4K 2K5	Delta	CANADA
245	Office of Dr. Shmuel Bergman, MD	1670 Dufferin Street Suite 205	M6H 3M2	Toronto	CANADA
246	Office of Dr. Swaran Syan, MD	430 Notre Dame Aveune	P3C 5K7	Sudbury	CANADA
247	Office of Dr. Teosar Bhesania, MD	Humber River Prof Building 2115 Finch Avenue West Suite 216A	M3N 2V6	Toronto	CANADA
248	Office of Dr. Tersia Lichtenstein, MD	1605 Gordon Avenue	V1Y 3G8	Kelowna	CANADA

Appendix to Clinical Study Synopsis for study 11630

249	Office of Dr. TunZan Maung, MD	2051 McCallum Road Suite 208	V2S 3N5	Abbotsford	CANADA
250	Office of Dr. William Awrey, MD	132 Parkdale Avenue South	L8K 3P3	Hamilton	CANADA
251	Office of Dr. William Doyle, MD	481 London Road Suite 7	N7T 4X3	Sarnia	CANADA
252	Office of Dr. William Liang, MD	503 Concession Street	L9A 1C1	Hamilton	CANADA
253	Omnispec Recherche Clinique Inc.	13714 Boulevard du Cure-Labelle Bureau 101	J7J 1L2	Mirabel	CANADA
254	Peel Research Associates	31 Center Street South Unit 2	L6W 2X7	Brampton	CANADA
255	Pinnacle Health Science Centre	9651 Yonge Street	L4C 1V7	Richmond Hill	CANADA
256	Providence Healthcare	3276 St. Clair Avenue East	M1L 1W1	Toronto	CANADA
257	Sarnia Institute of Clinical Research	481 London Road	N7T 4X3	Sarnia	CANADA
258	Scarborough Hospital-General Division	3030 Lawrence Ave. East	M1P 2T7	Scarborough	CANADA
259	St. John Regional Hospital	Atlantic Health Sciences Corp. 400 University Avenue	E2L 4L2	St. John	CANADA
260	Strathroy Medical Clinic	74 Front Street East	N7G 1Y7	Strathroy	CANADA
261	Summerville Family Health Team	190 Sherway Drive Suite 211	M9C 5N2	Toronto	CANADA
262	Viacar Recherche Clinique, Inc	1555 Jean-Paul Vincent Suite 170	J4N 1L6	Longueuil	CANADA

Appendix to Clinical Study Synopsis for study 11630

263	Viacar Recherche Clinique, Inc	1555 Jean-Paul Vincent Suite 170	J4N 1L6	Longueuil	CANADA
264	West Parry Sound Health Centre	6 Albert Street	P2A 3A4	Parry Sound	CANADA
265	Westwood Clinic	3220 Portage Avenue	R3K 0Y8	Winnipeg	CANADA
266	Clinica Tabancura	Av Tabancura 1185 4to piso		Santiago	CHILE
267	Corporacion de Beneficencia Osorno	Servicio Ambulatorio - Cardiologia Av. Zenteno # 1530		Osorno	CHILE
268	Hospital Barros Luco Trudeau	Gran Avenida J.M. Carrera 3204		Santiago de Chile	CHILE
269	Hospital Base de Osorno	Guillermo Bühler # 1765		Osorno	CHILE
270	Hospital Clínico Dr. Juan Noe Crevani	18 de septiembre 1000		Arica	CHILE
271	Hospital Clínico Herminda Martín	Cardiología Francisco Ramirez #10		Chillan	CHILE
272	Hospital Clínico Regional de Valdivia	Avenida Simpson 850		Valdivia	CHILE
273	Hospital del Salvador	Av. Salvador 364		Santiago de Chile	CHILE
274	Hospital Dr. Hernan Henríquez Aravena	Manuel Montt 115	5502609	Temuco	CHILE
275	Hospital El Pino	Av. Padre Hurtado # 13560 San Bernardo		Santiago	CHILE

Appendix to Clinical Study Synopsis for study 11630

276	Hospital Gustavo Fricke	Unidad de Cuidados Intensivos Coronarios Alvarez 1532		Viña del Mar	CHILE
277	Hospital Naval Almirante Nef	Subida Alessandri s/n		Viña del Mar	CHILE
278	Hospital Padre Hurtado	Cardiología Esperanza 2150 San Ramon		Santiago	CHILE
279	Hospital Regional de Concepción "Guillermo Grant Benavente"	San Martín # 1436		Concepción	CHILE
280	Hospital Regional Rancagua	Alameda # 611 - Piso 1 - Policlínico Cardiología		Rancagua	CHILE
281	Hospital San Camilo	Av. Miraflores #2085		San Felipe	CHILE
282	1st Affiliated Hosp., 4th Military Med Univ.	Cardiology Dept. No.15 West Changle Rd.,	710032	Xi'an	CHINA
283	1st Affiliated Hosp., college of Med, Zhejiang Univ.	Cardiology Dept. No.79 Qingchun Road,	310003	Hangzhou	CHINA
284	1st Affiliated hospital of Soochow University	No.96 Shizi Street,	215006	Suzhou	CHINA
285	1st Affiliated Hosp., Med College Xi'an Jiaotong Univ.	Cardiology Dept, No 277 Yan Tower West Road,	710061	Xi'an	CHINA
286	1st Affiliate Hosp., Dalian Med Univ.	Cardiology Dept. No.222 Zhongshan Road,	116011	Dalian	CHINA

Appendix to Clinical Study Synopsis for study 11630

287	2nd affiliated Hos. Harbin Medical University	The Second Affiliate Hospital Harbin Medical University		Harbin	CHINA
288	2nd Affiliated Hosp., Zhejiang Univ. College of Medicine	8 floor,the brain center building, No.88, Jiefang Road,	310009	Hangzhou	CHINA
289	2nd Hosp., Chongqing Medical Univ.	No.76 Linjiang Rd.,		Chongqing	CHINA
290	Affiliated Ruijin Hosp. Shanghai Jiaotong Univ. Med School	Hematology Dept. No.197 Ruijin Er Road,	200025	Shanghai	CHINA
291	Beijing Anzhen Hospital of the Capital University of Medical	Cardiology Dept. No.2, Anzhen Road, AnZhenLi, AnDingMen Wai, ChaoYang District	100029	Beijing	CHINA
292	Beijing Hospital	No.1 Dongdan Dahua Road,	100730	Beijing	CHINA
293	Beijing Tiantan Hospital	Neurology Dept. No. 6, Tiantan Xili, Chongwen District,	100050	Beijing	CHINA
294	Chinese PLA General Hosp.	Institute of Geriatric Cardiology, Chinese PLA General Hospital-Old Cardiovascular Institute No.28 Fuxing Road, Haidian District,	100853	Beijing	CHINA

Appendix to Clinical Study Synopsis for study 11630

295	Drum Tower Hospital of Nanjing University Medical School	Cardiology Dept. No.321 Zhongshan Road,	210008	Nanjing	CHINA
296	General Hospital, Tianjin Medical University	Neurology Dept. No.154,An Shan Dao,He Ping District,	300052	Tianjin	CHINA
297	Guangdong General Hos/Guangdong Provincial People's Hospital	Endocrinology Dept. No.106, Zhongshan Second Road	510080	Guangzhou	CHINA
298	Hainan Provincial People's Hospital	Cardiology Dept. No. 19 Xiuhua Road , Xiu Ying District	570311	Haikou	CHINA
299	Nanfang Hospital.	12/F internal medicine building, No.1838 Guangzhoudadao Bei,	510515	Guangzhou	CHINA
300	Peking Union Medical College Hospital	No.1 Shuai Fuyuan, Dongcheng District,	100730	Beijing	CHINA
301	Peking Univ. First Hosp.	Neurology Dept. No.8 Xishiku Dajie, Xicheng District,	100034	Beijing	CHINA
302	Peking Univ. People's Hosp.	Cardiovascular Dept. No.11 South Avenue, Xizhimen, Xicheng District,	100044	Beijing	CHINA
303	Renji Hosp. Shanghai Jiao Tong Univ. School of Medicine	No. 1630 Dongfang Rd.	200127	Shanghai	CHINA

Appendix to Clinical Study Synopsis for study 11630

304	Shanghai Changzheng Hospital	No.415, fengyang Road,	200003	Shanghai	CHINA
305	Shanghai Tongji Hospital of Tongji University	Cardiology Dept. No.389, Xincun Road		Shanghai	CHINA
306	Shengjing Hosp. of China Medical Univ.	Cardiology Dept. No.36 Sanhao Rd. Heping District	110004	Shenyang	CHINA
307	Sir Run Run Shaw Hosp Med College of Zhejiang University	No.3, Qingchun East Road,	310016	Hangzhou	CHINA
308	Southwest Hospital of 3rd Military Medical University.	No.30 Gaotanyanzheng Street, Shapingba District,	400038	Chongqing	CHINA
309	The 1st Hospital of Daqing City	No. 9 Zhong Kang Street, Sa Er Tu District	163001	Daqing	CHINA
310	The 2nd Affiliated Hospital of Shandong University	No.247 Beiyuan Avenue, Tianqiao District	250033	Jinan	CHINA
311	The 2nd Affiliated Hospital of Soochow University	Department of Vascular Surgery, No.1055, Sanxiang Road,	215004	Suzhou	CHINA
312	the People's Hospital of Liaoning Province	33 Wenyi Road Shenhe District,	110016	shenyang	CHINA
313	The Third Affiliated Hospital of Soochow University	Cardiology Dept. No. 185 Ju Qian Street,	213003	Changzhou	CHINA

Appendix to Clinical Study Synopsis for study 11630

314	The Third Xiangya Hospital of Central South University	Cardiology Dept. No.138,Tongzipo Road,	410013	Changsha	CHINA
315	The Xiangya Hospital of Central South University	Cardiology Dept. No.141 Xiangya Road,	410008	Changsha	CHINA
316	Union hospital of Tongji Medical College,Huazhong university	No. 1277, Jiefang Anunue	430032	Wuhan	CHINA
317	West China Hospital of Sichuan University	Respiratory Dept. No.37, Guoxue Alley	610041	Chengdu	CHINA
318	West China Hospital of Sichuan University	Respiratory Dept. No.37, Guoxue Alley	610041	Chengdu	CHINA
319	CEMDE	Calle 33 A No. 70 A - 175		Medellín	COLOMBIA
320	Centro de Investigación Clínica FOQUS	Clinica Santa Bibiana Avenida Calle 127 No. 16A - 27 Consultorio 510		Bogotá	COLOMBIA
321	Centro de Investigación Clínica Universidad del Rosario	Carrera 24 No. 63 C - 69 Office 309		Bogotá	COLOMBIA
322	Clínica Asunción	Calle 71 N°41-46 Office 401		Barranquilla	COLOMBIA
323	Clínica Medellín	Departamento Cardiología Calle 53 No. 46 - 38		Medellín	COLOMBIA
324	Clínica Shaio	Cardiology Dept. Av. Suba 104-50		Santa Fé de Bogotá	COLOMBIA

Appendix to Clinical Study Synopsis for study 11630

325	Fundacio del Caribe para la Investigacio Bio-Medica (BIOS)	Carrera 44 No 72-131 Consult. 201		Barranquilla	COLOMBIA
326	Fundación Cardioinfantil	Calle 163 A No. 13B-60 Edificio Nuevo-Tercer Piso Departamento de Investigaciones		Bogota	COLOMBIA
327	Fundación Cardiovascular de Colombia	Calle 155 A No. 23 - 58		Floridablanca-Bucaramanga	COLOMBIA
328	Fundación Clínica Valle del Lili	Carrera 98 No- 18 - 49		Cali	COLOMBIA
329	Hospital Universitario Clínica San Rafael	Carrera 8 No. 17 - 45 Sur		Bogotá	COLOMBIA
330	Julian Coronel Private Practice	Carrera 59 No. 1E - 21 Barrio Cuarto de Legua		Cali	COLOMBIA
331	Organización Sanitas Internacional	Diagonal 127 A No. 29 - 88 Office 512		Bogotá	COLOMBIA
332	Unidad Médica Villa del Country	Calle 78 No. 57 - 215 Office 207		Barranquilla	COLOMBIA
333	Bata Hospital	Havlickovo nábřeží 600	762 75	Zlin	CZECH REPUBLIC
334	Faculty Hospital Hradec Kralove	Sokolska 581	500 05	Hradec Kralove	CZECH REPUBLIC
335	Fakultni nemocnice Kralovske Vinohrady	Srobarova 50	10034	Praha 10	CZECH REPUBLIC
336	Fakultni nemocnice Motol	V uvalu 84	150 06	Praha 5	CZECH REPUBLIC

Appendix to Clinical Study Synopsis for study 11630

337	Fakultní nemocnice s poliklinikou Ostrava	17 Listopadu 1790	708 52	Ostrava	CZECH REPUBLIC
338	Fakultní nemocnice Na Bulovce	Budinova 2	180 81	Praha 8	CZECH REPUBLIC
339	Hospital Chomutov	Kochova 11/85	430 01	Chomutov	CZECH REPUBLIC
340	Krajská Nemocnice Liberec	Husova 10	46063	Liberec	CZECH REPUBLIC
341	Nemocnice Kutná Hora	Vojtěšská 237	28430	Kutná Hora	CZECH REPUBLIC
342	Nemocnice Litomysl	J.E. Purkyne 652	570 14	Litomysl	CZECH REPUBLIC
343	Nemocnice Na Fratišku	Interní Oddelení Na fratišku 847/8	110 00	Praha 1	CZECH REPUBLIC
344	Nemocnice na Homolce	Oddelení kardiologie Roentgenova 2	150 30	Praha 5	CZECH REPUBLIC
345	Nemocnice Slaný	Interní oddelení Poltýckých veznu 576	274 51	Slaný	CZECH REPUBLIC
346	Nemocnice s poliklinikou	Vydmuchov 399/5	734 12	Karvina Raj	CZECH REPUBLIC
347	Nemocnice Sternberk	Jivavská 20	785 01	Sternberk	CZECH REPUBLIC
348	Nemocnice ve Svitavách	Kollarova 7	568 25	Svitavy	CZECH REPUBLIC
349	Oblastní nemocnice Nachod	Bartonova 591	547 01	Nachod	CZECH REPUBLIC
350	Oblastní nemocnice Trutnov	M. Gorkeho 77	541 21	Trutnov	CZECH REPUBLIC
351	On-line 24	Karlovo náměstí 3	120 00	Praha 2	CZECH REPUBLIC
352	Poliklinika LIPA centrum	Seydlerova 2451	158 00	Praha 13	CZECH REPUBLIC
353	Privátní Kardiologická ambulance	Pekarská 84	602 00	Brno	CZECH REPUBLIC
354	Regional Hospital Pardubice	Pardubice Kyjevská 44	53003	Pardubice	CZECH REPUBLIC

Appendix to Clinical Study Synopsis for study 11630

355	Uherskohradistska nemocnice	J.E. Purkyne 365	625 00	Uherske Hradiste	CZECH REPUBLIC
356	Vseobecna fakultni nemocnice	1.LF UK U Nemocnice 2	12808	Praha 2	CZECH REPUBLIC
357	Vseobecna fakultni nemocnice	II interni klinika kardiologie a angiologie U nemocnice 2	12808	Praha 2	CZECH REPUBLIC
358	Vseobecna Fakultni Nemocnice Olomouc	I.P. Pavlova 6	775 20	Olomouc	CZECH REPUBLIC
359	Amtssygehuset Roskilde	Heartunit B71 Køgevej 7-13	4000	Køge	DENMARK
360	Cholesterol Laboratory	Anemonevej 54	2820	Gentofte	DENMARK
361	Frederiksberg Hospital	Department E Out-patient Clinic Nordre Fasanvej 57	2000	Frederiksberg	DENMARK
362	Gentofte Hospital	PA Forskning, post 67 Oppegang 3A Niels Andersensvej 65	2900	Hellerup	DENMARK
363	H:S Amager Hospital	Oppegang 3 Stuen C2	2300	Copenhagen	DENMARK
364	H:S Bispebjerg Hospital	Forskningsenheden afdeling Y Bispebjerg Bakke 23 Bygning 40	2400	Copenhagen	DENMARK
365	HS Hvidovre Hospital	Out-patient Clinic 244 Kettegård Alle 30	2650	Hvidovre	DENMARK
366	Næstved Centralsygehus	Medicinsk afd Ringstedsgade 61	4700	Næstved	DENMARK
367	Roskilde Amts Sygehus Køge	Cardiology Research Unit 0425P	4600	Køge	DENMARK

Appendix to Clinical Study Synopsis for study 11630

368	Slagelse Centralsygehus	Kardiologisk Afdelning Entrance 29 - 1 floor	4200	Slagelse	DENMARK
369	Sydvetsjysk Sygehus	Cardiology Research Unit Cardiology Research Group, Laksen Hvide Hus Indgang 56	6700	Esbjerg	DENMARK
370	Viborg Sygehus	Department of Medicine Research Unit Heibergs Alle 4	8800	Viborg	DENMARK
371	HUS, Meilahden sairaala	Dept. of Medicine, Div. of Cardiology Helsinki University Central Hospital HUCH P.O.Box 340	FIN-00260	Helsinki	FINLAND
372	Kuopion yliopistollinen sairaala	Mediteknia/Brain Research Unit Harjulantie 1B	70120	Kuopio	FINLAND
373	Turun yliopistollinen keskussairaala, kantasairaala	Kiinamyllynkatu 4-8	20520	Turku	FINLAND
374	Centre Hospitalier - Arras	Centre Hospitalier Service de Cardiologie Boulevard Georges Besnier	62000	ARRAS	FRANCE

Appendix to Clinical Study Synopsis for study 11630

375	Centre Hospitalier de Beziers	Service de Cardiologie Zac Montimaran 2 Rue Valentin Hauy BP 740	34525	BEZIERS	FRANCE
376	Centre Hospitalier du Val d'Ariege	Service de Cardiologie Chemin de Barrau	09000	Saint Jean de Verges	FRANCE
377	Centre Hospitalier Général - Albi	Centre Hospitalier Général Service de Cardiologie 22 Bd du Général Sibille	81013	ALBI	FRANCE
378	Centre Hospitalier Général - Belfort	Centre Hospitalier Général Hopital Général Service de Neurologie Rhumatologie 14, rue de Mulhouse	90016	BELFORT	FRANCE
379	Centre Hospitalier Général Gayraud - Carcassonne Cedex	Centre Hospitalier Général Antoine Gayraud Service de Neurologie Route de Saint Hilaire	11890	CARCASSONNE	FRANCE
380	Centre Hospitalier Intercommunal de la Côte Basque-Bayonne	Centre Hospitalier Intercommunal de la Côte Basque Service de Neurologie 13, Avenue de l'Interne Jacques Loeb	64109	BAYONNE	FRANCE

Appendix to Clinical Study Synopsis for study 11630

381	Centre Hospitalier Universitaire - Poitiers	C.H.U. Poitiers Pavillon René Beauchant - Service de Cardiologie 350, avenue Jacques Coeur BP 578	86021	POITIERS Cedex	FRANCE
382	Hôpital Arnaud de Villeneuve - Montpellier	C.H.U. Hôpital Arnaud de Villeneuve 371, avenue du Doyen Gaston Girard	34059	MONTPELLIER	FRANCE
383	Hopital Bichat - Paris	Groupe Hospitalier Bichat- Claude Bernard Hopital Bichat Service de Cardiologie 46, rue Henri Huchard	75018	PARIS	FRANCE
384	Hôpital Civil - Strasbourg	Hôpitaux Universitaires Hôpital Civil Service de cardiologie 1, place de l'Hôpital	67091	STRASBOURG	FRANCE
385	Hopital de Fleuriat - Bourg en Bresse	Centre Hospitalier Nouvel Hopital de Fleuriat Service de Neurologie	01012	BOURG EN BRESSE	FRANCE
386	Hôpital de Rangueil - Toulouse	C.H.U. Hôpital de Rangueil Service de Cardiologie A 1, avenue Poulhes	31403	TOULOUSE	FRANCE

Appendix to Clinical Study Synopsis for study 11630

387	Hôpital Gabriel Montpied - Clermont Ferrand	Hôpital Gabriel Montpied Cardiologie et Maladies Vasculaires 2 58 rue Montalembert	63003	CLERMONT FERRAND	FRANCE
388	Hôpital Saint Joseph - Paris	Hôpital Saint Joseph Service de Neurologie et Neurovasculaire 185, rue Raymond Losserand	75674	PARIS	FRANCE
389	Hôpital Saint Vincent de Paul	22 Boulevard de Belfort	59000	LILLE	FRANCE
390	Polyclinique du Littoral	Cabinet de Cardiologie 58 Rue Lafayette	22000	SAINT-BRIEUC	FRANCE
391	Asklepios Klinikum Melsungen	Innere Medizinische Klinik Kasseler Straße 80	34212	Melsungen	GERMANY
392	Facharztzentrum Dresden- Neustadt GbR	Zentrum für klinische Prüfungen Forststr. 3	01099	Dresden	GERMANY
393	Gemeinschaftspraxis Drs. Kohler/Salbach	Georg-Lechleiter-Platz 3	68165	Mannheim	GERMANY
394	Heliols Klinikum Wuppertal	Medizinische Klinik 3 Kardiologie Arrenberger Straße 20	42117	Wuppertal	GERMANY
395	Hellmig Krankenhaus Kamen	Innere Medizin Nordstr. 34	59174	Kamen	GERMANY

Appendix to Clinical Study Synopsis for study 11630

396	Johannes-Gutenberg-Universität Mainz	II. Medizinische Klinik und Poliklinik Kardiologie Geb. 209 / 2.OG Langenbeckstr. 1	55131	Mainz	GERMANY
397	Kardio-Fit GmbH & Co. KG	Walter-Kolb-Str. 9-11	60594	Frankfurt	GERMANY
398	Kardiologische Praxis Hr. Dr. A. Al-Zoebi	Clara-Zetkin-Str. 23	04779	Wernsdorf	GERMANY
399	Kardiologische Praxis Hr. Dr. P. Grooterhorst	Dieter aus dem Siepen - Platz 2	45468	Mülheim	GERMANY
400	Kardiologische Praxis Hr. Dr. R. Bosch	Asperger Str. 48	71634	Ludwigsburg	GERMANY
401	Kliniken Maria Hilf GmbH	Krankenhaus St. Franziskus Innere Medizin II Klinik für Kardiologie Viersener Straße 450	41063	Mönchengladbach	GERMANY
402	Klinikum Chemnitz gGmbH	MVZ am Küchwald GmbH Ambulantes Herzzentrum Chemnitz Bürgerstr. 2	09113	Chemnitz	GERMANY
403	Klinikum Coburg gGmbH	II. Medizinische Klinik Ketschendorfer Str. 33	96450	Coburg	GERMANY
404	Klinikum der Ernst-Moritz-Arndt-Universität	Klinik und Poliklinik für Innere Medizin B Friedrich-Löffler-Straße 23a	17475	Greifswald	GERMANY

Appendix to Clinical Study Synopsis for study 11630

405	Klinikum der Friedrich-Schiller-Universität Jena	Klinik für Innere Medizin I Kardiologie Erlanger Allee 101	07740	Jena	GERMANY
406	Klinikum der Ruhr-Universität Bochum St. Josef-Hospital	Medizinische Klinik II Kardiologie Gudrunstr. 56	44791	Bochum	GERMANY
407	Klinikum der Stadt Ludwigshafen am Rhein gGmbH	Medizinische Klinik B Kardiologie Bremserstr. 79	67063	Ludwigshafen	GERMANY
408	Klinikum Mannheim gGmbH	I. Medizinische Klinik Innere / Pneumologie Theodor-Kutzer-Ufer 1-3	68167	Mannheim	GERMANY
409	Krankenhaus Dresden-Friedrichstadt	Städtisches Klinikum Innere Medizin III Friedrichstraße 41	01067	Dresden	GERMANY
410	Kreiskrankenhaus Torgau	Innere Medizin Kardiologie Christianistr. 1	04860	Torgau	GERMANY
411	LMU Klinikum der Universität München - Großhadern	Klinik für Hals-, Nasen- und Ohrenkranke Marchioninistraße 15	81377	München	GERMANY
412	Malteser Krankenhaus St. Elisabeth	Innere Medizin Kardiologie Kurfürstenstr. 22	52428	Jülich	GERMANY

Appendix to Clinical Study Synopsis for study 11630

413	Medizinische Fakultät Carl Gustav Carus	Medizinische Klinik II Kardiologie Fetscherstr. 76	01307	Dresden	GERMANY
414	Medizinisches Versorgungszentrum Dachau	Zentrum für Innere Medizin und Allgemeinmedizin Münchner Str. 64	85221	Dachau	GERMANY
415	Praxis Hr. Dr. A. Krämer	Pfarrstr. 2	57072	Siegen	GERMANY
416	Praxis Hr. Dr. A. Schnabel	Dresdnerstr. 44	01662	Meißen	GERMANY
417	Praxis Hr. Dr. C. Bauknecht	Königsstrasse 78	78628	Rottweil	GERMANY
418	Praxis Hr. Dr. D. Boscher	Ulmer-Tor-Strasse 7	88400	Biberach	GERMANY
419	Praxis Hr. Dr. H.-E. Sarnighausen	Auf der Hoehe 69	21339	Lüneburg	GERMANY
420	Praxis Hr. Dr. H.-H. Ebert	Alex-Puschkin-Platz 4	01587	Riesa	GERMANY
421	Praxis Hr. Dr. H. Hohensee	Enderstr. 59	01277	Dresden	GERMANY
422	Praxis Hr. Dr. med. Jens Taggeselle	für Innere Medizin und Kardiologie Geschwister-Scholl-Straße 1	04416	Markkleeberg	GERMANY
423	Praxis Hr. Dr. med. Nicolaos Proskynitopoulos	Ziegelkampstraße 37	31582	Nienburg	GERMANY
424	Praxis Hr. Dr. M. Gabelmann	Albert-Schweitzer-Str.11A	79199	Kirchzarten	GERMANY
425	Praxis Hr. Dr. M. Leicht	Grenzstr. 24	04838	Eilenburg	GERMANY
426	Praxis Hr. Dr. M. Weißbrodt	Johannisplatz 1	04103	Leipzig	GERMANY
427	Praxis Hr. Dr. N. Schön	Am Stadtwall 22	84453	Mühldorf	GERMANY
428	Praxis Hr. Dr. R. Lange	Chemnitzer Str. 7	09232	Hartmannsdorf	GERMANY

Appendix to Clinical Study Synopsis for study 11630

429	Praxis Hr. Dr. Schröder	Max-Brauer-Allee 52	22765	Hamburg	GERMANY
430	SRH Klinikum-Karlsbad-Langensteinbach gGmbH	Innere Medizin Guttmannstr. 1	76307	Karlsbad	GERMANY
431	Städtische Kliniken Frankfurt am Main / Hoechst	Klinik für Innere Medizin I Gotenstr. 6-8	65929	Frankfurt	GERMANY
432	St. Marien-Hospital Buer	Abteilung Innere Medizin Robert-Kochstr. 1	53115	Bonn	GERMANY
433	Universitäres Herz- und Gefäßzentrum Hamburg	Woerdemanns Weg 25-27	22527	Hamburg	GERMANY
434	Universitätsklinikum Freiburg	Abt. Innere Medizin III - Kardiologie / Angiologie Hugstetter Straße 55	79106	Freiburg	GERMANY
435	Universitätsklinikum Heidelberg	Neurologische Universitätsklinik Im Neuenheimer Feld 400	69112	Heidelberg	GERMANY
436	Universitätsklinikum Leipzig ÄöR	Herzzentrum Leipzig GmbH - Universitätsklinik Klinik für Innere Medizin / Kardiologie Strümpellstraße 39	04289	Leipzig	GERMANY

Appendix to Clinical Study Synopsis for study 11630

437	Universitätsklinikum Otto-von Guericke - Magdeburg	Universitätsklinik für Kardiologie, Angiologie u. Pneumologie Haus 5 Leipziger Strasse 44	39120	Magdeburg	GERMANY
438	Universitätsklinikum Ulm	Medizinische Universitätsklinik und Poliklinik Innere Medizin III / Hämatologie/Onkologie Robert-Koch-Straße 8	89081	Ulm	GERMANY
439	Vivantes Humboldt-Klinikum	Klinik für Innere Medizin und konservative Intensivmedizin Am Nordgraben 2	13509	Berlin	GERMANY
440	Vivantes Klinikum Hellersdorf	Klinik für Innere Medizin - Allgemeine Innere Medizin, Diabetologie und Gastroenterologie Myslowitzer Straße 45	12621	Berlin	GERMANY
441	Vivantes Klinikum Neukölln	Klinik für Innere Medizin Kardiologie und konservative Intensivmedizin Rudower Str. 48	12351	Berlin	GERMANY

Appendix to Clinical Study Synopsis for study 11630

442	Vivantes Klinikum Prenzlauer Berg	Fröbelstraße 15	10405	Berlin	GERMANY
443	Vivantes Klinikum Spandau	Klinik für Innere Medizin kardiologie, Pneumologie und konservative Intensivmedizin Neue Bergstr. 6	13585	Berlin	GERMANY
444	Wenckebach-Krankenhaus	Allgemeine Innere Medizin Wenckebachstr. 23	12099	Berlin	GERMANY
445	Agios Andreas General Hospital of Patras	1 Tsertidou street	26335	Patras	GREECE
446	Agios Panteleimon General State Hospital of Nikaia	3 D. Mantouvalou str.	14455	Athens	GREECE
447	Asklipieion General Hospital of Voulas	1 Vass. Pavlou	16673	Voula	GREECE
448	H Elpis General Hospital of Athens	7 Dimitsanis street	11522	Athens	GREECE
449	Korgialenio Benakio Red Cross General Hospital of Athens	1 Athanasaki & Erythrou Stavrou Str.	115 22	Abelokipi - Athens	GREECE
450	Sotiria General State Hospital of Chest Diseases	152, Messogion Avenue	11527	Athens	GREECE

Appendix to Clinical Study Synopsis for study 11630

451	St. Savvas Hospital	171, Alexandras Avenue	115 22	Athens	GREECE
452	Grantham Hospital	Cardiac Medical Unit, Grantham Hospital, 125 Wong Chuk Hang Road, Aberdeen	125	Hong Kong	HONG KONG
453	Prince of Wales Hospital	Department of Medicine & Therapeutics, 9/F Clinical Sciences Building, 30-32 Ngan Shing Street,		Shatin	HONG KONG
454	Prince of Wales Hospital	Division of Neurology, Department of Medicine and Therapeutics, 9/F Clinical Science Building,30-32 Ngan Shing Street,		Shatin	HONG KONG
455	Queen Elizabeth Hospital	Cardiac Day Care Center 8/F Block B, Department of Medicine, 30 Gascoigne Road		Kowloon	HONG KONG
456	Queen Mary Hospital	Room K1928, 19/F, Block K,102 Pok Fu Lam Road,	102	Hong Kong	HONG KONG
457	AEK Orszagos Haemophilia Kozpont	Robert K.krt.44	1134	Budapest	HUNGARY
458	Bacs-Kiskun Country Hospital	Nyiri u. 38.	6000	Kecskemet	HUNGARY
459	Bajcsy Zsilinszky Hospital	Maglodi utca 89-91	1106	Budapest	HUNGARY

Appendix to Clinical Study Synopsis for study 11630

460	Borsod County Hospital	II Department of Neurology Szentpeteri kapu 72-76	35-26	Miskolc	HUNGARY
461	Borsod County Hospital	Szentpeteri kapu 72-76	3526	Miskolc	HUNGARY
462	Bugat Pal Hospital	Dozsa Gy. ut. 20-22	3200	Gyongyos	HUNGARY
463	Csolnoky Ferenc Veszprem County Hospital	Korhaz utca 1	8200	Veszprem	HUNGARY
464	Fovaros Onkormanyzat Szent Janos Korhaza es Eszak-Budai	Dios arok u. 1-3	H-1125	Budapest	HUNGARY
465	Jahn Ferenc Hospital	Koves u. 2-4	1204	Budapest	HUNGARY
466	Josa Andras Hospital	Dept. of Neurology Szent Istvan u. 68	H-4400	Nyiregyhaza	HUNGARY
467	Medical and Health Center	University of Szeged Koranyi fasor 6	6720	Szeged	HUNGARY
468	Pecsi TE Neurológiai Klinika	Neurológiai Klinika Ret u 2.	7623	Pecs	HUNGARY
469	Petz Aladar Megyei Korhaz	Neurology & Stroke Dept. Zrinyi u.13	9002	Gyor	HUNGARY
470	Szent Imre Hospital	Tetenyi ut 12-16.	1115	Budapest	HUNGARY
471	Szent Istvan Hospital	Nagyvarad ter. 1	H-1096	Budapest	HUNGARY
472	Tolna County Hospital	Beri Balog Adam u. 5-7	7100	Szekszard	HUNGARY
473	University of Debrecen Medical&Health Science Center	Clinic of Neurology Nagyerdei krt. 98.	4012	Debrecen	HUNGARY
474	University of Semmelweis	Neurológiai klinika Balassa J. u. 6	1083	Budapest	HUNGARY

Appendix to Clinical Study Synopsis for study 11630

475	Zala Megyei Korhaz	Zrinyi M. u. 1.	8900	Zalaegerszeg	HUNGARY
476	Apollo Hospitals International Ltd	Plot 1A Bhat G.I.D.C Estate	382428	Gandhinagar	INDIA
477	Apollo Hospital Tondiarpet	No.645 & 646 TH Road Thandiarpet	600081	Chennai	INDIA
478	Apollo Speciality Hospitals	Lake View Road K.K Nagar	625020	Madurai	INDIA
479	Bankers Heart Institute	Near Tagorenagar, Opposite Suryakiran Complex Old Padra Road	390015	Vadodara	INDIA
480	Bhatiya General Hospital	Tardeo	400007	Mumbai	INDIA
481	Deenanath Mangeshkar Hospital	Behind Himali Society, Erandavane	411009	Pune	INDIA
482	Escorts Heart Institute and Research Centre	Okhla Road	110 025	New Delhi	INDIA
483	G. Kuppuswamy Naidu Memorial Hospital	P.B. No. 6327, Pappanaickenpalayam	641 037	Coimbatore	INDIA
484	Global Hospitals	Lakdi Ka Pool	500004	Hyderabad	INDIA
485	Heart First and Vascular Clinic	Athwaline Road, Parle Point F.D. Sheron Plaza Opp. Ambika Nikelan Bus-stop	393001	Surat	INDIA
486	JSS Medical College and Hospital	Ramanuja Road	570004	Mysore	INDIA

Appendix to Clinical Study Synopsis for study 11630

487	Kamineni Wockhardt Hospitals	No. 4-1-1227, King Koti Road, Abids,	500 001	Hyderabad	INDIA
488	King Edward Memorial Hospital	4th Floor, T. D. H. Building, Rasta Peth	411011	Pune	INDIA
489	Kovai Medical Center and Hospital Limited	Post Box No 3209,Avanashi Road	641 014	Coimbatore	INDIA
490	Medicity Hospitals	5-9-22,Secretariat Road	500 063	Hyderabad	INDIA
491	Medwin Hospitals	Raghava Towers, Chirang Ali Lane,	500 001	Hyderabad	INDIA
492	Narayana Hrudayalaya	258/A, Bommasandra Industrial Area,	560099	Bangalore	INDIA
493	Omega Hospital	Mahaveer Circle,Kankanady	575002	Mangalore	INDIA
494	Ruby Hall Clinic	40 Sasson Road,	411001	Pune	INDIA
495	Seven Hills Hospital	Rockdale Layout, Waltair Main Road,	530 002	Visakhapatnam	INDIA
496	S. P. Medical College & A. G. Hospitals	Department of cardiology	334003	Bikaner	INDIA
497	Tagore Heart Care & Research Center	Banda Bahadur Nagar Mahavir Marg	144001	Jalandhar	INDIA
498	The Heart Care Clinic	201 Balleshwar Avenue Opp Raipath Road	380054	Ahmedabad	INDIA
499	Vikram Hospital and Heart Care	46 Vivekananda Road Yadavagiri	570020	Mysore	INDIA

Appendix to Clinical Study Synopsis for study 11630

500	Yashodha Hospital	Department of Cardiology,Rajbhavan Road, Somajiguda	500 082	Hyderabad	INDIA
501	Barzilai Medical Center	3, Hahistadrut Street	78306	Ashkelon	ISRAEL
502	Bikur Cholim Hospital	5 Stauss Street P.O.B 492	91004	Jerusalem	ISRAEL
503	Bnai Zion Medical Center	47, Golomb Street P.O.B. 4940	31048	Haifa	ISRAEL
504	Bnai Zion Medical Center	47, Golomb Street P.O.B. 4940	31048	Haifa	ISRAEL
505	Chaim Sheba Medical Center	Tel-Aviv University Tel Hashomer 52621	52621	Tel Hashomer	ISRAEL
506	Clalit Health Services - Natania	16 David Remez St.	42310	Nathania	ISRAEL
507	Clalit Health Services, Sharon Shomron District Dgani Clinic	63 Herzl Street	38362	Hadera	ISRAEL
508	Edith Wolfson Medical Center	62 Haloachamim Street P.O.B. 5	58100	Holon	ISRAEL
509	Hadassah University Hospital Ein Kerem	P.O.B. 12000	91120	Jerusalem	ISRAEL
510	Hadassah University Hospital Mount Scopus	P.O.B. 24035	91240	Jerusalem	ISRAEL
511	Haemek Medical Center	.	18101	Afula	ISRAEL
512	Hillel Yaffe Medical Center	P.O.B. 169	38100	Hadera	ISRAEL

Appendix to Clinical Study Synopsis for study 11630

513	Holly Family MCNazareth	.	16100	Nazareth	ISRAEL
514	Kaplan Medical Center	P.O.B. 1	76100	Rehovot	ISRAEL
515	Lady Davis Carmel Medical Center	7, Michal Street	34362	Haifa	ISRAEL
516	Rambam Medical Center	8, Haaliya Hashniya St.	31096	Haifa	ISRAEL
517	Shaare Zedek Medical Center	P.O.B. 3235	91031	Jerusalem	ISRAEL
518	Tel Aviv Sourasky Medical Center	6 Weizman St.	64239	Tel - Aviv	ISRAEL
519	Ziv Medical Center	P.O.B. 1008	13100	Safed	ISRAEL
520	A.O. di Padova	Cardiologia - Centro Gallucci Via Giustiniani, 2	35128	Padova	ITALY
521	A.O. di Perugia	Medicina Interna e Cardiovascolare - Stroke Unit Ospedale Santa Maria della Misericordia Via G. Dottori - Località Sant'Andrea delle Fratte	06156	Perugia	ITALY
522	A.O. Osp Circolo e Fond. Macchi	Medicina Clinica Viale L. Borri, 57	21100	Varese	ITALY
523	A.O. Ospedale Circolo Busto Arsizio	Cardiologia P.O. di Saronno Piazzale Borella, 1	21047	Saronno	ITALY

Appendix to Clinical Study Synopsis for study 11630

524	A.O. Osp Niguarda Ca' Granda	Cardiologia 4 - Diagnostica non invasiva Piazza Ospedale Maggiore, 3	20162	Milano	ITALY
525	A.O. San Salvatore	Laboratorio Emodinamica e Angiografia Piazzale Cinelli	61100	Pesaro	ITALY
526	A.O. Sant'Andrea	Neurologia Via Grottarossa, 1035-1039	00189	Roma	ITALY
527	A.O.U. di Bologna	Dip. Cardiovascolare Università degli Studi di Bologna Via Massarenti, 9	40138	Bologna	ITALY
528	A.O.U. di Parma	Cardiologia Viale Gramsci, 14	43100	Parma	ITALY
529	A.O.U. Ospedali Riuniti Foggia	Malattie Apparato Cardiovascolare Via L. Pinto, 1	71100	Foggia	ITALY
530	A.O.U. Policlinico - Vittorio Emanuele	Cardiologia P.O. Ferrarotto Via S. Citelli, 6	95124	Catania	ITALY
531	A.O. Villa Sofia - CTO	Cardiologia Piazzetta Salerno, 1	90146	Palermo	ITALY
532	ASL 1 Imperiese - Liguria	Cardiologia S.O. di Imperia Via Sant'Agata, 57	18100	Imperia	ITALY

Appendix to Clinical Study Synopsis for study 11630

533	ASL CE/2 Aversa - Campania	Cardiologia - Utic P.O. San Giuseppe Melorio Via Melorio, 81	81055	Santa Maria Capua Vetere	ITALY
534	ASL RM/C Roma - Lazio	Medicina di Urgenza e Pronto Soccorso P.O. S.Eugenio Piazzale dell'Umanesimo, 10	00144	Roma	ITALY
535	ASL Sassari - Sardegna	Cardiologia P.O. SS. Annunziata Via E. de Nicola	07100	Sassari	ITALY
536	AUSL 06 Livorno - Toscana	Cardiologia P.O. di Cecina Via Montanara - Località la Ladronaia	57023	Cecina	ITALY
537	AUSL 06 Livorno - Toscana	Viale Alfieri, 36	57124	Livorno	ITALY
538	AUSL 08 Arezzo - Toscana	Cardiologia Ospedale Valdichiana Località Fratta, 145	52044	Cortona	ITALY
539	AUSL 2 Lanciano-Vasto- Chieti - Abruzzo	Istituto di Cardiologia Università Degli Studi di Chieti Ospedale Clinicizzato SS. Annunziata Via Forlanini, 50	66100	Chieti	ITALY

Appendix to Clinical Study Synopsis for study 11630

540	AUSL 4 L'Aquila - Abruzzo	Clinica Neurologica P.O. San Salvatore - Università di L'Aquila Piazzale S.Tommasi, 1	67100	L'Aquila	ITALY
541	AUSL Piacenza - Emilia Romagna	Corso Vittorio Emanuele, 169	29100	Piacenza	ITALY
542	AUSL Rimini - Emilia Romagna	Cardiologia Ospedale degli Infermi Via Settembrini, 2	47900	Rimini	ITALY
543	IRCCS A.O.U. San Martino e IST Ist.Nazionale Ricerca Cancro	Neurologia Dip. Scienze Neurologiche e della Visione Via De Toni, 5	16132	Genova	ITALY
544	IRCCS Centro Cardiologico Monzino	Cardiologia d'urgenza Via C.Parea, 4	20138	Milano	ITALY
545	IRCCS Fondazione San Raffaele	Laboratorio Coagulazione ed Unità Ricerca Trombosi Istituto Scientifico Universitario San Raffaele Via Olgettina, 60	20132	Milano	ITALY
546	IRCCS Ist Auxologico Italiano	Cardiologia e Riabilitazione Cardiovascolare Ospedale San Luca Piazzale Brescia, 20	20143	Milano	ITALY
547	IRCCS Ist Clinico Humanitas	Neurologia d'Urgenza e Stroke Unit Via Manzoni, 56	20089	Rozzano	ITALY

Appendix to Clinical Study Synopsis for study 11630

548	IRCCS Ist Clinico Humanitas	Cardiologia Clinica e Terapia dello Scompenso Via Manzoni, 56	20089	Rozzano	ITALY
549	IRCCS Policlinico San Matteo	Cardiologia Ambulatorio Cardiomiopatie, Scompenso e Trapianto Viale Golgi, 19	27100	Pavia	ITALY
550	IRCCS Policlinico San Matteo	Angiologia - Malattie Tromboemboliche Piazzale Golgi, 19	27100	Pavia	ITALY
551	Ajou University Hospital	San 5 Wonchon-dong Yeongtong-gu		Suwon	KOREA, REPUBLIC OF
552	Daegu Catholic University Medical Center	3056-6 Daemyung 4-Dong Namgu	705-718	Daegu	KOREA, REPUBLIC OF
553	Daejeon St. Mary's Hospital	520-2, Daehung-dong, Jung-gu		Daejeon	KOREA, REPUBLIC OF
554	Gangnam Severance Hospital, Yonsei University	146-92 Dogok-dong Gangnam-gu	135-720	Seoul	KOREA, REPUBLIC OF
555	Hallym University Sacred Heart Hospital	896 Pyongchon-dong, Dongan-gu,	431-070	Anyang	KOREA, REPUBLIC OF
556	Inje University Ilsan Paik Hospital	2240, Daehwa-dong, Ilsanseo-ku	411-706	Goyang-si	KOREA, REPUBLIC OF
557	Keimyung University Dongsan Medical Center	194 Dongsan-dong, Chung-gu,	700-712	Daegu	KOREA, REPUBLIC OF

Appendix to Clinical Study Synopsis for study 11630

558	Konkuk University Hospital	4-12 Hwayang-dong, Kwangjin-gu,	143-729	Seoul	KOREA, REPUBLIC OF
559	Korea University Guro Hospital	80, Guro-dong Guro-ku	152-703	Seoul	KOREA, REPUBLIC OF
560	Kyunghee East-West Neo Medical Center	149 Sangil-dong, Kangdong- gu,	134-727	Seoul	KOREA, REPUBLIC OF
561	Pusan National University Hospital	1-10 Ami-dong, Seo-gu Hospital IRB	602 739	Pusan	KOREA, REPUBLIC OF
562	Seoul National University Bundang Hospital	300 Gumi-dong, Bundang-gu,	463-707	Songnam	KOREA, REPUBLIC OF
563	Seoul National University Hospital	101 Daehang-ro, Jongno-gu	110-744	Seoul	KOREA, REPUBLIC OF
564	Severance Hospital, Yonsei University College of Medicine	250 Seongsanno (134 Sinchon-dong) Seodaemun-gu	120-752	Seoul	KOREA, REPUBLIC OF
565	St. Mary Hospital	62 Yeouido-dong Yeungdeungpo-gu	150-713	Seoul	KOREA, REPUBLIC OF
566	St. Vincent's Hospital	93-6 Ji-dong, Paldal-gu,	442-723	Suwon	KOREA, REPUBLIC OF
567	The Catholic University of Korea Kangnam St. Mary's Hospital	505 Banpo-dong Seocho-Gu	137-701	Seoul	KOREA, REPUBLIC OF
568	Uijeongbu ST. Mary's Hospital	Uijeongbu St Mary's hospital International Health Service 65-1 Kumoh-Dong ,	480-130	Uijeongbu	KOREA, REPUBLIC OF

Appendix to Clinical Study Synopsis for study 11630

569	Yeungnam University Medical Center	317-1 Daemyung-dong , Nam-gu,	705-717	Daegu	KOREA, REPUBLIC OF
570	Kardiologijos ir reabilitacijos klinika	Rumpiskės 4	91131	Klaipėda	LITHUANIA
571	Kaunas 2nd Clinical Hospital	Kardiologijos skyrius Josvainiu 2	47144	Kaunas	LITHUANIA
572	Kaunas Medical University Hospital	Eiveniu 2	LT-50166	Kaunas	LITHUANIA
573	Klaipėda District Hospital	S.Neries 3	LT-92231	Klaipėda	LITHUANIA
574	Klaipėdos Jurininku Ligoninė	Liepojos 45	92288	Klaipėda	LITHUANIA
575	Panevezys Hospital	Smėlynės 25	35144	Panevezys	LITHUANIA
576	Siauliai County Hospital	V.Kudirkos 99	76231	Siauliai	LITHUANIA
577	UAB Cor Sanum	Pamenkalnio 25	01113	Vilnius	LITHUANIA
578	UAB Elite Medica	Savanoriu 235	50184	Kaunas	LITHUANIA
579	UAB Kardivita	Kolektyvo 13D	08314	Vilnius	LITHUANIA
580	UAB Sirdies namai	M. Paco 7/2-1	10309	Vilnius	LITHUANIA
581	University Hospital of Vilnius City	Vilnius universitetinė Antakalnio ligoninė Antakalnio 124	10200	Vilnius	LITHUANIA
582	Vilnius University Hospital	Vilnius University Hospital "Santariskiu Klinikos" Santariskiu 2	08661	Vilnius	LITHUANIA
583	Hospital Universiti Kebangsaan Malaysia	Jalan Tenteram 5600 Bandar tun Razak		Kuala Lumpur	MALAYSIA

Appendix to Clinical Study Synopsis for study 11630

584	Hospital Universiti Sains Malaysia	16150 Kubang Kerian		Kelantan	MALAYSIA
585	Institute Jantung Negara	Department of Cardiology Block 4, Ground level Institute Jantung Negara 145 Jalan Tun Razak		Kuala Lumpur	MALAYSIA
586	Sarawak General Hospital	Sarawak General Hospital Heart Centre 94300 Kota Samarahan	93400	Sarawak	MALAYSIA
587	University Malaya Medical Centre	Medical Centre, Location 1: CIC, 13th Floor, Menara Utama; location 2: Pusat Perubatan Universiti Ma laya; Location 3: Lembah Pantai	59100	Kuala Lumpur	MALAYSIA
588	Consultorio Dr. Héctor Briseño Ramírez	Lazaro Cardenas 2931 Col. Jardin del Bosque	44520	Guadalajara	MEXICO
589	Hospital Ángeles Culiacán	Bld. Alfonso G. Calderón 2139 Col. Desarrollo Urbano Tres Rios Torre Medica Cons. 802	80020	Culiacan	MEXICO
590	Hospital Ángeles del Carmen	Cardiología Tarascos 3435 Fracc. Monraz	44670	Guadalajara	MEXICO

Appendix to Clinical Study Synopsis for study 11630

591	Hospital Ángeles de Querétaro	Cardiología Bernardino del Razo # 21 Consultorio 310-b Col. el Ensueno	76178	Querétaro	MEXICO
592	Hospital Cardiologica Aguascalientes	Ecuador 200 Col. Las Americas	20230	Aguascalientes	MEXICO
593	Hospital Central "Dr. Ignacio Morones Prieto"	Av. Venustiano Carranza 2395 Zona Universitaria Col. Los Filtros	78240	San Luis Potosí	MEXICO
594	Hospital de Jesús	Servicio de Cardiología Av 20 de Noviembre # 82, 2° piso	06090	México	MEXICO
595	Hospital de Nuestra Señora de la Salud	Madre Perla 435 Fracc. Industrias		San Luis Potosí	MEXICO
596	Hospital General de Culiacán "Dr. Bernardo J. Gastelum" SS	Aldama y Nayarit S/N Col. Rosales	80000	Culiacán	MEXICO
597	Hospital General de Culiacán "Dr. Bernardo J. Gastelum" SS	Aldama y Nayarit S/N Col. Rosales	80000	Culiacán	MEXICO
598	Hospital General de Zapopan	Colon 289 Col. Centro	45100	Zapopan	MEXICO

Appendix to Clinical Study Synopsis for study 11630

599	Hospital San Jose "Tecnológico de Monterrey"	Centro Medico de Atencion Integral en Enfermedades Hepaticas Ave Ignacio Morones Prieto Pte 3000 Col. Los Doctores	64710	Monterrey	MEXICO
600	Unidad de Investigación Clínica en Medicina	Despacho 524 Av. La Clínica 2520 Colonia Sertoma	64020	Monterrey	MEXICO
601	Academisch Ziekenhuis Maastricht	Academisch Ziekenhuis Maastricht - Afd. Cardiologie - P. Debyelaan 25	6229 HX	MAASTRICHT	NETHERLAND S
602	Atrium Medisch Centrum	Afd. Cardiologie - H. Dunantstraat 5	6419 PC	HEERLEN	NETHERLAND S
603	BovenIJziekenhuis	Statenjachtstraat 1 Afdeling Cardiologie	1034 CS	AMSTERDAM	NETHERLAND S
604	Canisius Wilhelmina Ziekenhuis	Canisius Wilhelmina Ziekenhuis - Afd. Cardiologie - Weg door Jonkerbos 100	6532 SZ	NIJMEGEN	NETHERLAND S
605	Diaconessenhuis Meppel	Hoogeveenseweg 38	7943 KA	MEPPEL	NETHERLAND S
606	Groene Hart Ziekenhuis	Bleulandweg 10	2803 HH	GOUDA	NETHERLAND S

Appendix to Clinical Study Synopsis for study 11630

607	Jeroen Bosch Ziekenhuis	Lokatie Carolus Afdeling Cardiologie Hervensebaan 4	5232 JL	DEN BOSCH	NETHERLAND S
608	Kenemer Gasthuis, Locatie Zuid	Kenemer Gasthuis/Locatie EG - Afd. Cardiologie - Boerhaavelaan 22	2035 RC	HAARLEM	NETHERLAND S
609	Maxima Medisch Centrum, locatie Veldhoven	Afd. Cardiologie - De Run 4600	5504 DB	VELDHOVEN	NETHERLAND S
610	Meander Medisch Centrum/Locatie De Lichtenberg	Lokatie Lichtenberg Afd. Cardiologie Utrechtseweg 160	3818 ES	AMERSFOORT	NETHERLAND S
611	Medisch Centrum Alkmaar	Medisch Centrum Alkmaar - Afd. Cardiologie - Wilhelminalaan 12	1815 JD	ALKMAAR	NETHERLAND S
612	Medisch Centrum Haaglanden, Locatie Antoniushove	Burgemeester Banninglaan 1	2262 BA	LEIDSCHENDAM	NETHERLAND S
613	Medisch Centrum Leeuwarden	Medisch Centrum Leeuwarden - Afd. Inwendige Geneeskunde - Postbus 888	8901 BR	LEEUWARDEN	NETHERLAND S
614	Onze Lieve Vrouwe Gasthuis	Afd. Cardiologie, Oosterpark 9	1091 AC	AMSTERDAM	NETHERLAND S

Appendix to Clinical Study Synopsis for study 11630

615	Reinier de Graaf Gasthuis	Reinier de Graaf Gasthuis - Afd. Cardiologie - R. de Graafweg 3-11	2625 AD	DELFT	NETHERLAND S
616	Spaarne Ziekenhuis	Spaarnepoort 1	2134 TM	HOOFDORP	NETHERLAND S
617	St. Lucas Andreas Ziekenhuis,	Afd. Interne Geneeskunde - J. Tooropstraat 164	1061 AE	AMSTERDAM	NETHERLAND S
618	Universitair Medisch Centrum Groningen	Hanzeplein 1	9713 GZ	Groningen	NETHERLAND S
619	Vlietland Ziekenhuis, locatie Vlaardingen	Holysingel 3	3136 LA	VLAARDINGEN	NETHERLAND S
620	Westfries Gasthuis	Maelsonstraat 3	1624 NP	HOORN	NETHERLAND S
621	Auckland City Hospital	2 Park Road Grafton	1023	Auckland	NEW ZEALAND
622	Auckland City Hospital	2 Park Road Grafton	1023	Auckland	NEW ZEALAND
623	Christchurch Hospital	Department of Medicine, PO Box 4345	8011	Christchurch	NEW ZEALAND
624	Dunedin Hospital	201 Great King Street	9016	Dunedin	NEW ZEALAND
625	North Shore Hospital	Shakespeare Road Takapuna North Shore City	0622	Auckland	NEW ZEALAND
626	Waikato Hospital	Pembroke Street	3204	Hamilton	NEW ZEALAND
627	Wellington Hospital	Riddiford Street Newtown	6021	Wellington South	NEW ZEALAND
628	Humana Sandvika A/S	Postboks 63	N-1301	Sandvika	NORWAY
629	Kolstien 1	Kolstien 1	5097	Bergen	NORWAY
630	Medi 3 Ålesund AS	Forskningsavdeling 4 etasje	6003	Ålesund	NORWAY

Appendix to Clinical Study Synopsis for study 11630

631	Medi3 Innlandet	Parkgata 12	2317	Hamar	NORWAY
632	Medi3 Innlandet	Avd. Elverum Helge Væringsaasens vei 14	2401	Elverum	NORWAY
633	Ostlandske Hertesenter	Prinsengt. 7	1530	Moss	NORWAY
634	Rådhuset Spesialistsenter	Fritjof Nansens plass 7	0160	Oslo	NORWAY
635	Senter for Kliniske Studier	Gamlehaugveinen 20	5231	Bergen	NORWAY
636	Spesiallegetjensten A/S	Solli Kinikk Trondheimsveien 70	N-2050	Jessheim	NORWAY
637	Vestfold Hertesenter	Thoroyaveien 4	3209	Sandefjord	NORWAY
638	Vestvollen legekantor	Vestvollen legekantor	2019	Skedsmokorset	NORWAY
639	Clínica Cayetano Heredia	Av. Honorio Delgado 370 Urb. Ingeniería San Martín de Porres	LIMA 31	Lima	PERU
640	Clinica Maison De Sante	Avenida Chorrillos 171 173 Chorrillos	LIMA 9	Lima	PERU
641	Clínica Ricardo Palma	Cardiologist Office Av. Javier Prado 1066 San Isidro	27	Lima	PERU
642	Clínica San Felipe	Avenida Gregorio Escobedo 650 Jesús María	LIMA 11	Lima	PERU
643	Clinica San Lucas	Avenida Guardia Civil 385 San Borja	LIMA 41	Lima	PERU
644	Clínica San Pablo	Av. El Polo 789	33	Lima	PERU

Appendix to Clinical Study Synopsis for study 11630

645	Hospital Central de la Fuerza Aerea del Perú	Avenida Aramburu cuadra 2 s/n Miraflores	LIMA 18	Lima	PERU
646	Hospital María Auxiliadora	Oficina de Investigaciones Av. Miguel Iglesias S/N San Juan de Miraflores		San Juan de Miraflores	PERU
647	Hospital Militar Luis Arias Schreiber	Av. Faustino Sanchez Carrion s/n. Jesús María.	LIMA 11	Lima	PERU
648	Hospital Nacional Arzobispo Loayza	Av. Alfonso Ugarte N° 848 Lima 1	LIMA 1	Lima Cercado	PERU
649	Hospital Nacional Hipólito Unanue	Av. César Vallejo 1390 El Agustino	LIMA10	Lima	PERU
650	Community Health & Development Cooperative Hospital	Room 222, Anda Riverside, Magallanes Interior,	8000	Davao	PHILIPPINES
651	Davao Doctors Hospital	3rd Floor Heart Institute E. Quirino Avenue	8000	Davao City	PHILIPPINES
652	Manila Doctors Hospital	Rm. 223 MAC 2 Building 667 United Nations Avenue Ermita	1000	Manila City	PHILIPPINES
653	National Kidney and Transplant Institute	Rm. 3215 Doctors Clinic East Avenue, Diliman	1110	Quezon City	PHILIPPINES
654	Perpetual Succour Hospital	Rm. 414-B Subspecialty Clinic Gordon Avenue	6000	Cebu City	PHILIPPINES

Appendix to Clinical Study Synopsis for study 11630

655	Philippine Heart Centre	Rm 405 Medical Arts Building, East Avenue, Diliman	1110	Quezon	PHILIPPINES
656	Quirino Memorial Medical Center	Medicine Pay Clinic (2nd Floor) Project 4 Katipunan	1105	Quezon City	PHILIPPINES
657	Saint Paul's Hospital	Rm. 206 Gen. Luna St.	5000	Iloilo City	PHILIPPINES
658	St. Luke's Medical Centre Cathedral Heights	Rm. 1014 South Tower, Cathedral Heights Building, E. Rodriguez Avenue	1102	Quezon City	PHILIPPINES
659	University of East Ramon	Rm. 220 Magsaysay Memorial Medical Center Aurora Blvd	1113	Quezon City	PHILIPPINES
660	AMICOR	ul. Krakusow 4	30-092	Krakow	POLAND
661	Centralny Szpital Kliniczny AM	ul. Banacha 1a	02-097	Warszawa	POLAND
662	Centralny Szpital Kliniczny AM	ul. Banacha 1a	02-097	Warszawa	POLAND
663	Centrum Medycyny Ratunkowej -Dolnoslaski Szpital Specjal.	ul. Traugutta 116	50-420	Wroclaw	POLAND
664	Gabinet Kardiologiczno-Intern.	ul. Legionow 107E/1	81-472	Gdynia	POLAND
665	Instytut Kardiologii	ul. Alpejska 42	04-628	Warszawa	POLAND
666	Instytut Reumatologii	Klinika Choroby Wiencowej ul. Spartanska 1	02-637	Warszawa	POLAND

Appendix to Clinical Study Synopsis for study 11630

667	Poradnia Kardiologiczna NZOZ	ul. Kosnego 8	45-056	Opole	POLAND
668	Praktyka Lekarska	ul. Boguchwały 2d/10	71-531	Szczecin	POLAND
669	Przychodnia Zdrowia Zadebie	ul. Narcyzowa 3	96100	Skierniewice	POLAND
670	Samodzielny Szpital Wojew. im. Kopernika	ul. Rakowska 15	97-300	Piotrków Trybunalski	POLAND
671	Specjalistyczny Szpital Sw. Jana	ul. Balewskiego 1	83-200	Starogard Gdański	POLAND
672	SP Szpital Kliniczny nr 2 PAM	Al Powstanców Wielkopolskich 72	70-111	Szczecin	POLAND
673	SP Szpital Kliniczny nr 7 Śląskiego Uniwersytetu Medycznego	Górnosłaskie Centrum Medyczne ul. Ziółowa 45/47	40-635	Katowice	POLAND
674	SP Szpital Kliniczny nr 7 Śląskiego Uniwersytetu Medycznego	Górnosłaskie Centrum Medyczne ul. Ziółowa 45/47	40-635	Katowice	POLAND
675	SP ZOZ im. kard. S. Wyszyńskiego	ul. Armii Krajowej 7	98-200	Sieradz	POLAND
676	SP ZOZ w Olawie	ul. Baczyńskiego 1	55-200	Olawa	POLAND
677	Szpital Kliniczny Dzieciatka Jezus -Centrum Leczenia Obrazów	ul. Lindleya 4	02-005	Warszawa	POLAND
678	Szpital Uniwersytecki im. Antonia Jurasza	ul. M. Skłodowskiej-Curie 9	85-094	Bydgoszcz	POLAND

Appendix to Clinical Study Synopsis for study 11630

679	Szpital Uniwersytecki Nr 2 im. J. Bizela	ul. Ujejskiego 75	85-168	Bydgoszcz	POLAND
680	Szpital Wojewodzki	ul. Wieniecka 49	87-800	Wloclawek	POLAND
681	Szpital Wojewodzki w Siedlcach	ul. Poniatowskiego 26	08-110	Siedlce	POLAND
682	Uniwersyteckie Centrum Kliniczne	ul. Debinki 7	80-952	Gdansk	POLAND
683	Wielospecjalistyczny Szpital Miejski	ul. Szpitalna 19	85-826	Bydgoszcz	POLAND
684	Wojewodzki Szpital Specjalistyczny	ul. Kamińskiego 73A	51-124	Wroclaw	POLAND
685	Wojewodzki Szpital Specjalistyczny im. Bieganskiego	ul. Kniaziewicz1/5	91-347	Lodz	POLAND
686	Wojewodzki Szpital Zespolony	ul. Medyczna 19	09-407	Plock	POLAND
687	Wojew. Szpital Zespolony	ul. Sw. Jozefa 53/59	87-100	Torun	POLAND
688	Wojskowy Instytut Medyczny	ul. Szaserow 128	04-141	Warszawa	POLAND
689	Zespol Opieki Zdrowotnej	ul. Szymanowskiego 19	27-400	Ostrowiec	POLAND
690	Zespol Opieki Zdrowotnej Zyrardow	ul. Limanowskiego 30	96-300	Zyrardow	POLAND
691	Cabinet Medical CARDIOMED SRL	Vasile Lascar 100 et 1 ap 5 sector 2	020506	Bucharest	ROMANIA
692	Cardiomed	Titulescu bloc E ap 1	200147	Craiova	ROMANIA
693	Centrul de Boli Cardiovasculare al Armatei	Calea Plevnei 134	010242	Bucharest	ROMANIA

Appendix to Clinical Study Synopsis for study 11630

694	Centrul Medical MED PLUS	Bd Iuliu Maniu 158A, Ap 38, sector	061114	Bucharest	ROMANIA
695	Centrul Medical Sana	Sergiu Dumitru nr 3	011025	Bucharest	ROMANIA
696	Clinical Emergency County Hospital Brasov	Calea Bucuresti 25-27	50035	Brasov	ROMANIA
697	County Clinical Hospital	Gheoghe Doja str. 65		Oradea	ROMANIA
698	County Clinical Hospital	Gheoghe Doja str. 65		Oradea	ROMANIA
699	Emergency Clinical County Hospital no 1	1, Tabaci Street	200642	Craiova Dolj	ROMANIA
700	Fundeni Clinical Institute	Fundeni str 258, Sector 2		Bucharest	ROMANIA
701	Institutul de Boli Cardiovasculare si Transplant	Gh.Marinescu 50	540136	Targu-Mures	ROMANIA
702	Institutul de Boli Cardiovasculare si Transplant	Gh.Marinescu 50	540136	Targu-Mures	ROMANIA
703	Policlinica CCBRL SRL	Aleea Buchetului nr 2, Bl C2, sector 3	030463	Bucharest	ROMANIA
704	"Prof. dr. c.c. Iliescu" Institute of Cardiovascular Diseases	Fundeni no. 258	022328	Bucharest	ROMANIA
705	Spital Clinic Dr. C.I. Parhon	Bd. Carol I 50	700503	Iasi	ROMANIA
706	Spitalul Clinic Caritas	Str. Traian 29	030572	Bucharest	ROMANIA
707	Spitalul Clinic Caritas	Str. Traian 29	030572	Bucharest	ROMANIA

Appendix to Clinical Study Synopsis for study 11630

708	Spitalul Clinic de Urgenta "Sf. Ioan"	Sos. Vitan-Barzesti nr 13	042122	Bucharest	ROMANIA
709	Spitalul Clinic de Urgenta "Sf Pantelimon"	Sos Pantelimon nr 340	021659	Bucharest	ROMANIA
710	Spitalul Clinic Judetean Sibiu	Corneliu Coposu str, nr 2-4	550245	Sibiu	ROMANIA
711	Spitalul de urgenta "Sf. Ioan Cel Nou"	Bd 1 Decembrie 1918, nr 21	720284	Suceava	ROMANIA
712	Spitalul Judetean Brasov	Str. Independentei 2	500197	Brasov	ROMANIA
713	Spitalul Judetean Focsani	Cuza Voda 50-52	620034	Focsani	ROMANIA
714	Spitalul Uiversitar de Urgenta Elias	Bd. Marasti 17 sector 1	011461	Bucharest	ROMANIA
715	Spitalul Universitar de Urgenta Bucuresti	Splaiul Independentei str. 169	050098	Bucharest	ROMANIA
716	Spitalul Universitar de Urgenta Bucuresti	Splaiul Independentei str. 169	050098	Bucharest	ROMANIA
717	Spitalul Universitar de Urgenta Bucuresti	Splaiul Independentei str. 169	050098	Bucharest	ROMANIA
718	University Country Hospital	I. Bulbuca str. 156	300748	Timisoara	ROMANIA
719	1st Pirogov Clinical Hospital	Leninsky prospect 8	117049	Moscow	RUSSIA
720	21st Century Medical Center	Bolshoi sampsonievsky prospect 45	194 044	St. Petersburg	RUSSIA
721	Alexandrovskaya Hospital	prospect Solidarnosti 4	193312	St. Petersburg	RUSSIA
722	Altaisky Regional Cardiological Dispensary	Malakova str. 46	656055	Barnaul	RUSSIA

Appendix to Clinical Study Synopsis for study 11630

723	Cardiologic Center	Melnikaite str. 111	625026	Tumen	RUSSIA
724	Central Clinical Hospital	Marshala Timoshenko str 15	121356	Moscow	RUSSIA
725	Central Clinical Hospital #6	Seraphimy Deryabinoy 34	620149	Ekaterinburg	RUSSIA
726	City Clinical Hospital #21	Polzunova str. 21	630051	Novosibirsk	RUSSIA
727	City Clinical Hospital # 34	Titova 18	630054	Novosibirsk	RUSSIA
728	City Clinical Hospital N 12	Bakinskaya 26	115516	Moscow	RUSSIA
729	City Clinical Hospital N 20	Lenskaya str. 15	129327	Moscow	RUSSIA
730	City Clinical Hospital N 20 n.a. Berzona	Instrumentalya str. 12	660014	Krasnoyarsk	RUSSIA
731	City Clinical Hospital n.a. Botkin	the 2nd Botkinskiy proezd, 5 building 20	125284	Moscow	RUSSIA
732	City Clinical Hospital n.a. Botkin	the 2nd Botkinskiy proezd, 5 building 20	125284	Moscow	RUSSIA
733	City Clinical Hospital No 3	prospect Pobedy 287	454021	Chelyabinsk	RUSSIA
734	City Clinical Hospital N 7	Geroev Khasana str. 24	614010	Perm	RUSSIA
735	City Hospital N 41	Nachdiva Vasilieva str. 25	620043	Ekaterinburg	RUSSIA
736	City Hospital No 8	Mokhovaya str. 1/9	191187	St. Petersburg	RUSSIA
737	City Outpatient Clinic #51	pr. Kosmonavtov 35	196211	St. Petersburg	RUSSIA
738	City out-patients clinic N 20	Ust-Kurdumskaya str. 3	410018	Saratov	RUSSIA
739	City Pokorvskaya Hospital	Bolshoi prospect V.O. 85	199106	St. Petersburg	RUSSIA
740	Clinical Hospital N 62	Popova str. 24	150010	Yaroslavl	RUSSIA
741	Clinical Hospital no. 3	Michurinskiy pr. 56		Moscow	RUSSIA

Appendix to Clinical Study Synopsis for study 11630

742	Federal Center of Heart, Blood and Endocrinology n.a.Almazov	Akkuratova street, 2	194341	St. Petersburg	RUSSIA
743	Federal Center of Heart, Blood and Endocrinology n.a.Almazov	Akkuratova street, 2	194341	St. Petersburg	RUSSIA
744	GU Clinical Hospital of RAN	Out-patient Dept. prospect Morisa Tereza 72	194017	St. Petersburg	RUSSIA
745	Hospital of Emergency N 1	prospect Gagarina 23	460040	Orenburg	RUSSIA
746	Hospital of Internal Affairs Ministry	Narodnogo Opocheniya str. 35	123060	Moscow	RUSSIA
747	Institute of Cardiology	Kievskaya str.111a	634012	Tomsk	RUSSIA
748	Institute of Medical Trials	Koli Tomchaka 25, liter A3	196084	St. Petersburg	RUSSIA
749	Kardioklinika	Kuznetovskaya str. 25 A	196105	St. Petersburg	RUSSIA
750	LLC Medical Union New Hospital	Zavodskaya str. 29		Ekaterinburg	RUSSIA
751	Main Military Clinical Hospital Named after Burdenko	Hospitalnaya Sq, 3	105229	Moscow	RUSSIA
752	Medical Exercises Dispensary of Krasnogvardeisky region	Novocherkassky prospect 15	195112	St. Petersburg	RUSSIA
753	Minicipal Hospital N 40	Kasatkina str 7 building 6	129301	Moscow	RUSSIA

Appendix to Clinical Study Synopsis for study 11630

754	Moscow Scintific Clinical Institute named after Vladimirsky	Schepkina Str 61/2	129110	Moscow	RUSSIA
755	Municipal Clinical Hospital of Emergency N2	Cardiology Department Turgeneva str. 155	630008	Novosibirsk	RUSSIA
756	Municipal Hospital N 11	Dvintsev str 6	127018	Moscow	RUSSIA
757	Municipal Hospital N 15	Veshnyakovskaya str 23	111539	Moscow	RUSSIA
758	Municipal Hospital N 3	Bolshaya Sadovaya str. 137	410012	Saratov	RUSSIA
759	Municipal Hospital N 51	Alyabjeva str. 7/33	121309	Moscow	RUSSIA
760	Municipal Hospital N 53 of Moscow Public Health Dept.	Trofimova str.26	109432	Moscow	RUSSIA
761	Municipal Hospital N 68	Shkuleva str. 4	109263	Moscow	RUSSIA
762	North-western Center of diagnostic& tratment	Depytatskaya str.8	197110	St. Petersburg	RUSSIA
763	Novosibirsk State-Funded Medical Institution	Department of urgent cardiology Biliding 3 Zalesskogo str. 6	630047	Novosibirsk	RUSSIA
764	Novosibirsk State-Funded Medical Institution	Department of urgent cardiology Biliding 3 Zalesskogo str. 6	630047	Novosibirsk	RUSSIA
765	Polyclinic N 3 of RF President Administrative Dept.	Grokholskyi pereulok 31	129090	Moscow	RUSSIA

Appendix to Clinical Study Synopsis for study 11630

766	Regional Clinical Cardiology Center	Stroikova str. 96	390026	Ryazan	RUSSIA
767	Regional Clinical Hospital	Smirnovskoe Ushcheliye 1	410053	Saratov	RUSSIA
768	Regional Clinical Hospital	Rodionova Str. 190		Nizhniy Novgorod	RUSSIA
769	Regional Clinical Hospital	Octyabrsky prospect 22	650061	Kemerovo	RUSSIA
770	Regional Clinical Hospital	Aksakova str. 23	460018	Orenburg	RUSSIA
771	Regional Clinical Hospital	Yakovlevskaya str. 7	150062	Yaroslavl	RUSSIA
772	Regional Clinical Hospital for war veterans	street of 50 years of Oktyabrya, 10	650099	Kemerovo	RUSSIA
773	Research Center of Preventive Medicine	Petroverigskiy per. 10	101990	Moscow	RUSSIA
774	Research Institute of Diabetes, Municipal Hospital N67	Saljama Adilja 2	123154	Moscow	RUSSIA
775	Road Clinical Hospital - station Chelyabinsk OAO "RZHD"	Tsvilinga 41	454091	Chelyabinsk	RUSSIA
776	Russian University of Peoples' Friendship	City Clinical Hospital nr 29 Gospitalnaya sq 2 Building 3	111 020	Moscow	RUSSIA
777	Siberian State Medical University of Roszdrav	Faculty Therapy Chair with Clinical Pharmacology Course Moscovskiy tract 2	634050	Tomsk	RUSSIA

Appendix to Clinical Study Synopsis for study 11630

778	Smolensk Medical Academy	based on Regional Clinical Hospital Krupskoj str. 28	214019	Smolensk	RUSSIA
779	State Institute for Medical Doctors Advanced Training	Gastroenterology Dept. Hospitalnaya Sq 2	111 020	Moscow	RUSSIA
780	State Medical Academy	Krasniy pr. 52	630091	Novosibirsk	RUSSIA
781	State Medical Academy of Roszdrav	Cherkasskaya Str. 2	454092	Chelyabinsk	RUSSIA
782	St. Elizabeth's Hospital	Kirochnaya str. 41	193015	St. Petersburg	RUSSIA
783	St. Petersburg City Hospital N26	Kostjushko str. 2	196247	St. Petersburg	RUSSIA
784	St. Petersburg Medical University n.a. Pavlov	Lva Tolstogo 6/8	197022	St. Petersburg	RUSSIA
785	St. Petersburg Medical University n.a. Pavlov	Faculty Therapy Chair Lva Tolstogo str. 6/8	197022	St. Petersburg	RUSSIA
786	St. Petersburg State Medical Academy named after Mechnikov	Piskarevsky prospect 47	195 067	St. Petersburg	RUSSIA
787	Sverdlovskaya Regional Clinical Hospital #1	Volgogradskaya str. 185	620102	Ekaterinburg	RUSSIA
788	War Veterans Hospital	Startovaya str. 4	129336	Moscow	RUSSIA

Appendix to Clinical Study Synopsis for study 11630

789	Alexandra Hospital	Administration Block Level 3, Clinical Service Department, 378 Alexandra Road	159964	Singapore	SINGAPORE
790	National Heart Centre	Level 4, Clinical Trials Unit 17 Third Hospital Avenue Mistri Wing	168752	Singapore	SINGAPORE
791	National Neuroscience Institute	Level 3, Clinical Staff Office Department of Neurology 11 Jalan Tan Tock Seng	308433	Singapore	SINGAPORE
792	Clinical Projects Research SA	42 Russell Street	6850	Worcester	SOUTH AFRICA
793	Clinresco Kempton Park	ARWYP Medical Suites 4th Floor 22 Pine Avenue	1610	Kempton Park	SOUTH AFRICA
794	Fichmed GF 5 Boanerges CC Trials	Rose Park Hospital 53 Gustav Crescent Fichardt Park	9317	Bloemfontein	SOUTH AFRICA
795	Little Company of Mary Hospital	50 Totius St Groenkloof	0181	Pretoria	SOUTH AFRICA
796	Medforum Hospital Pretoria	DEPARTMENT OF UROLOGY MEDFORUM HOSPITAL 412 SCHOEMAN STREET	0001	PRETORIA	SOUTH AFRICA
797	Medi Clinic Heart Hospital	551 Park Street Arcadia	0083	Pretoria	SOUTH AFRICA

Appendix to Clinical Study Synopsis for study 11630

798	Medicross Greenacres Port Elizabeth	Cape Road Medicross 229 Cape Road Greenacres		Prot Elizabeth	SOUTH AFRICA
799	Medic Vaal Medical Centre	6 Jan van Riebeeck Blvd	1900	Vanderbijlpark	SOUTH AFRICA
800	Metro Medical Centre	90 Parthenon Street Phoenix Plaze Phoenix	4068	Durban	SOUTH AFRICA
801	Milpark Hospital	Milpark Hospital Guild Road Parktown	2193	Johannesburg	SOUTH AFRICA
802	Morningside Clinic Rochester Place	Morningside Clinic Rochester Place 173 Rivonia Road Cnr Hill Morningside, Sandton	2057	Johannesburg	SOUTH AFRICA
803	N1 City Hospital	Cnr Frans Conradie Drive & Manus Gerber Street Goodwood	7460	Cape Town	SOUTH AFRICA
804	Netcare Private Hospital	Universitas Paul Kruger Street	9300	Bloemfontein	SOUTH AFRICA
805	Panorama Medi Clinic	Panorama Mediclinic Rothschild Boulevard Panorama		Cape Town	SOUTH AFRICA
806	Panorama Medi Clinic	Panorama Mediclinic Rothschild Boulevard Panorama		Cape Town	SOUTH AFRICA
807	Pretoria Academic Hospital New	Corner Malan & Voortrekkers Street Gezina	0084	Pretoria	SOUTH AFRICA

Appendix to Clinical Study Synopsis for study 11630

808	Vergelegen Medi-Clinic	Dr. J.M. Engelbrect Block 1 Vergelegen MediClinic Main Road	7130	Somerset West	SOUTH AFRICA
809	Vincent Palotti Hospital	Alexandra Road Pinelands	7450	Cape Town	SOUTH AFRICA
810	Vincent Palotti Hospital	Alexandra Road Pinelands	7450	Cape Town	SOUTH AFRICA
811	Wilgers Hospital	Wilgers Hospital Denneboom Road		Pretoria	SOUTH AFRICA
812	Ciutat Sanitària i Universitaria de la Vall d'Hebron	Servei de Cardiologia Passeig de la Vall d'Hebrón, 119-129	08035	Barcelona	SPAIN
813	Consorti Sanitari de Terrassa	Servicio de Cardiología Secretaria Médica-6ª planta Ctra. de Torrebonica, s/n	08227	Terrassa	SPAIN
814	Corporació Sanitària Parc Taulí	Servicio de Cardiología Parc Taulí, s/n	08208	Sabadell	SPAIN
815	Hospital Arnau de Vilanova de Valencia	Servicio de Cardiología c/ San Clemente, 12	46015	Valencia	SPAIN
816	Hospital Central de Asturias	Coronarias. Servicio de Cardiología. Área del Corazón, Planta 8 Celestino Villamil	33006	Oviedo	SPAIN

Appendix to Clinical Study Synopsis for study 11630

817	Hospital Clínico Universitario de Santiago de Compostela	Servicio de Cardiología. Planta -2. consultas externas A Choupana, s/n	15706	Santiago de Compostela	SPAIN
818	Hospital de Donostia	Servicio de Cardiología Paseo del Dr. Beguiristain s/n	20014	San Sebastián	SPAIN
819	Hospital de la Santa Creu i de Sant Pau	Servei de Hematologia Pabelló Nostra Senyora de Montserrat Avda. Sant Antoni Maria Claret, 167	08025	Barcelona	SPAIN
820	Hospital del Mar	Servicio de Cardiología. Planta2 Paseig Maritim, 25-29	08003	Barcelona	SPAIN
821	Hospital de Navarra	Servicio de Cardiología Avda. Irunlarrea, 3 31008 Pamplona	31008	Pamplona	SPAIN
822	Hospital de Torrecárdenas	Servicio de Cardiología Pasaje de Torrecárdenas, s/n	04009	Almería	SPAIN
823	Hospital de Viladecans	Servicio de Cardiología. Consulta 42 Av. de Gavá, 38	08840	Viladecans	SPAIN
824	Hospital do Meixoeiro	Cardiología Intervencionista C/ Meixoeiro, s/n	36214	Vigo	SPAIN

Appendix to Clinical Study Synopsis for study 11630

825	Hospital General Universitario de Alicante	Servicio de Hematología - Edificio Extracciones (gris) Primera planta c/ Pintor Baeza, s/n	03010	Alicante	SPAIN
826	Hospital General Universitario de Guadalajara	Servicio de Cardiología C/ Donantes de Sangre, s/n	19002	Guadalajara	SPAIN
827	Hospital General Yagüe	Servicio de Cardiología Avda. del Cid, s/n	09005	Burgos	SPAIN
828	Hospital Son Llatzer	Servicio de Hematología. Banco de Sangre, Planta 3 Ctra. Manacor, km 4	07198	Palma de Mallorca	SPAIN
829	Hospital Teresa Herrera	Laboratorio de Hematología, 2ª planta Carretera del Pasaje	15006	A Coruña	SPAIN
830	Hospital Universitario Clínica Puerta de Hierro	Servicio de Cardiología Unidad de Hospitalización C/ Manuel de Falla, 1	28222	Majadahonda	SPAIN
831	Hospital Universitario "La Paz"	Servicio de Cardiología, Planta 1ª Paseo de la Castellana, 261	28046	Madrid	SPAIN

Appendix to Clinical Study Synopsis for study 11630

832	Hospital Universitario Virgen de la Macarena	Servicio de Medicina Interna. Unidad de Hipertensión y Riesgo Vascular Avda. Dr. Fedriani, s/n	41071	Sevilla	SPAIN
833	Hospital Virgen de la Victoria	Servicio de Hematología Patio B Camus Universitario Teatinos, s/n	29010	Malaga	SPAIN
834	H. Sanatorio Virgen del Mar	Unidad de Cuidados Intensivos Ctra. del Mami, km1	04120	La Cañada de San Urbano	SPAIN
835	Akademiska Sjukhuset	Arytmisektionen Kardiologkliniken	781 85	Uppsala	SWEDEN
836	Capio Citykliniken	Clementstorget 5	222 21	Lund	SWEDEN
837	Kärnsjukhuset i Skövde	Medicinnottagningen	541 85	Skövde	SWEDEN
838	Ljungby Lasarett	Medicinkliniken	341 35	Ljungby	SWEDEN
839	Sala Närsjukhus	Medicinnottagningen	733 25	Sala	SWEDEN
840	Västerviks Sjukhus	Medicinkliniken	593 81	Västervik	SWEDEN
841	Hôpital Cantonal Universitaire de Genève	Service de Cardiologie Rue Gabrielle-Perret-Gentil 4	1211	Genève	SWITZERLAND
842	Universitätsspital Zürich	Neurologie Frauenklinikstrasse 26	8091	Zürich	SWITZERLAND
843	Cathay General Hospital	No. 280 Jen-Ai Rd. Sec.4, B1 Cardiac Catheterization Room	106	Taipei	TAIWAN
844	Chang Gung Memorial Hospital	No5, Fu-Hsing Street, Kuei Shan Shiang	333	Tao-Yuan	TAIWAN

Appendix to Clinical Study Synopsis for study 11630

845	Chang Gung Memorial Hospital Kaohsiung	No. 123, TaPei Road, Niao-Sung Hsiang	833	Kaohsiung	TAIWAN
846	Changhua Christian Hospital	No. 135 Nanxiao St.	500	Changhua	TAIWAN
847	Cheng Hsin Rehabilitation Medical Center	No. 45 Cheng Hsin St.Pai-Tou,	112	Taipei	TAIWAN
848	Chi- Mei Medical Hospital, Tai-Nan Hsien	No. 901 Chung Hwa Road, Yung Kang City	710	Tainan	TAIWAN
849	China Medical University Hospital	No. 2, Yuh-Der Rd.	404	Taichung	TAIWAN
850	Chung Shan Medical University Hospital	No. 110 Sec.1 Chien-Kuo N. Road	402	Taizung	TAIWAN
851	Mackay Memorial Hospital	No. 92, Section 2, Chung shan North Road	10449	Taipei	TAIWAN
852	National Cheng Kung University Hospital	138 Sheng-Li Road		Tainan	TAIWAN
853	National Taiwan University Hospital	National Taiwan University Hospital No.7, Chung-San South Road	100	Taipei	TAIWAN
854	Veterans General Hospital	Tamshui location, No. 45, Minsheng Road, Tamshui,	251	Taipei	TAIWAN
855	Veterans General Hospital	Taipei Veterans General Hospital No.201, Shih-Pai Road, Section 2	11217	Taipei	TAIWAN

Appendix to Clinical Study Synopsis for study 11630

856	King Chulalongkorn Memorial Hospital	1873 Rama IV Rd. Pathumwan	10330	Bangkok	THAILAND
857	Maharaj Nakorn Chiang Mai Hospital	Cardiovascular Division, Department of Medicine, Maharaj Nakorn Chiang Mai Hospital	50200	Chiang Mai	THAILAND
858	Pramongkutklao Hospital	Department of medicine 315 Rajavithi Rd. Rajathevee	10400	Bangkok	THAILAND
859	Ramathibodhi Hospital	Cardiology Division, Department of Medicine, Faculty of Medicine, Rama VI Rd. Rajathevee	10400	Bangkok	THAILAND
860	Siriraj Hospital, Mahidol	Division of Cardiology Faculty of Medicine 2 Prannok Rd. Bangkok Noi	10700	Bangkok	THAILAND
861	Thammasat University	95 Moo 8 Paholyotin Rd. Amphur Klongluang	10120	Pathumthani	THAILAND
862	19 Mayıs Univ. Tıp Fak.	Kardiyoloji ABD	55139	Samsun	TURKEY
863	Adnan Menderes Üniversitesi Tıp fakultesi	Kardiyoloji Anabilim	09100	Aydin	TURKEY
864	Akdeniz Üniversitesi Tıp Fakultesi Hastanesi	Cardiology Department	07003	Antalya	TURKEY
865	Ankara Numune Hastanesi	Kardiyoloji ABD	06100	Ankara	TURKEY

Appendix to Clinical Study Synopsis for study 11630

866	Cukurova Universitesi Tip Fakultesi Hastanesi	Cardiology Department		Adana	TURKEY
867	Dicle Universitesi Tip Fakultesi	Kardiyoloji ABD	21830	Diyarbakir	TURKEY
868	Ege Universitesi Tip Fakultesi	Kardiyoloji Anabilim Dalı Bornova	35100	Izmir	TURKEY
869	Ege Universitesi Tip Fakultesi	Kardiyoloji Anabilim Dalı Bornova	35100	Izmir	TURKEY
870	Erciyes Universitesi Tip Fakultesi	.		Kayseri	TURKEY
871	Florence Nightingale Hastanesi	Kardiyoloji ABD		Istanbul	TURKEY
872	Inonu Universitesi Tip Fakultesi	Kardiyoloji ABD	44280	Malatya	TURKEY
873	Kocaeli University Medical Faculty	Kardiyoloji ABD		Kocaeli	TURKEY
874	Konya Meram Tip Fakultesi	Kardiyoloji ABD	42080	Konya	TURKEY
875	Mersin Universitesi Tip Fakultesi	Kardiyoloji ABD	33079	Mersin	TURKEY
876	Osmangazi Universitesi Tip Fakultesi	Kardiyoloji ABD	26480	Eskisehir	TURKEY
877	Saglik Bakanligi Izmir Egitim ve Aratirma Hastanesi	Kardiyoloji AnaBilimDal	35380	Izmir	TURKEY
878	Uludag Univ. Medical Faculty	Kardiyoloji ABD	16059	Bursa	TURKEY
879	Central City Clinical Hospital	Dept. of Hospital Surgery No 1 Shelkovichnaya str. 39/1	01023	Kiev	UKRAINE

Appendix to Clinical Study Synopsis for study 11630

880	Cherkaskyi oblasnyi kardiologichnyi tsentr	Viddilennya gostroi koronamoi nedostatnosti ta porushen rytmu Mendeleyeva 3	18009	Cherkasy	UKRAINE
881	City Clinical Hospital # 1	Dept of Cardiology Kharkovskoye Shosse 121	02 091	Kiev	UKRAINE
882	City Clinical Hospital #4	Neurology Department Solomenskaya ul. 17	03110	Kyiv	UKRAINE
883	City Clinical Hospital # 5	Vidpochinku str. 11	03 115	Kiev	UKRAINE
884	City Clinical Hospital # 8	Department of Rehabilitation of neurological Patients Kondratyuka str. 8	01105	Kyiv	UKRAINE
885	City Hospital no 12	Kafedra facultetskoi terapii no 2 Natsionalnyi Medychnyi Universitet Pidvysootskogo 4a	01103	Kiev	UKRAINE
886	Dorozhnya klinichna likarnya	Geroiv prykordonnykiv 3a	65039	Odessa	UKRAINE
887	Emergency Care Hospital	Dept. of Myocardial Infraction Bratislavskaya str. 3	02 260	Kiev	UKRAINE
888	Institute of Cardiology AMS	konsultatyvna poliklinika Narodonogo opolcheniya 5	03680	Kiev	UKRAINE

Appendix to Clinical Study Synopsis for study 11630

889	Institute of Cardiology AMS	Viddil symptomatichnoyi hipertensiyi Narodonogo opolcheniya 5	03680	Kiev	UKRAINE
890	Institute of Cardiology AMS	Viddil sertsevoi nedostatnosti Narodnogo Opolechania str. 5	03680	Kiev	UKRAINE
891	Institute of Cardiology AMS	Viddil arytmiy Narodonogo opolcheniya 5	03680	Kiev	UKRAINE
892	Institute of Cardiology AMS	Viddil arterialnoyi hipertensiyi Narodonogo opolcheniya 5	03680	Kiev	UKRAINE
893	Institute of Neurology, Psychiatric and Narcology of AMSU	Academic Pavlov ul. 46	61068	Kharkiv	UKRAINE
894	Institute of Therapy AMS Ukraine	Viddil klinichnoi farmakologii ta farmakoterapii Postysheva Prosp. 2a	61039	Kharkiv	UKRAINE
895	Institute of Therapy AMS Ukraine	Gastroenterology Dept 2a Postishev Avenue Kharkov Ukraine. 61039		Kharkiv	UKRAINE
896	Institute of Therapy AMS Ukraine	Viddil ateroskleroza ta ishemichnoi khvoroby sertsya Postysheva Prosp. 2a	61039	Kharkiv	UKRAINE

Appendix to Clinical Study Synopsis for study 11630

897	Instytut gerontologiyi AMN Ukrayiny	Viddil klinichnoyi ta epidemiologichnoi cardiologiyi Vyshgorodska 67	04114	Kiev	UKRAINE
898	Instytut gerontologiyi AMN Ukrayiny	Viddil kardiologii Vyshgorodska 67	04114	Kiev	UKRAINE
899	Instytut medytsyny transportu	Malovskogo 8	65110	Odessa	UKRAINE
900	Instytut nevidkaldnoyi ta vidnovnoyi terapii im. Gusaka AMN	Leninskyi pr. 45	83045	Donetsk	UKRAINE
901	Komunalna ustanova sumska miska klinichana likarnia	Peremogy 20-rokiv	40021	Sumy	UKRAINE
902	Likarnia Sviatogo Luky	Karla Marksa, 65	25001	Kirovograd	UKRAINE
903	Likuvalno-diagnosychnyi kardiologichnyi tsentr	Viddil kardiologii Kulparkivska 35	79015	Lviv	UKRAINE
904	Lugansk State Medical University	50-rokiv Obrony Luganska 14	91011	Lugansk	UKRAINE
905	Miska klinichna bagatoprofilna likarnya No 18	Klinichne imunologichne viddilennya Insytut mikrobiologii i imunologii AMN Ukrainy krasnodarska 104	61029	Kharkiv	UKRAINE
906	Miska klinichna likarnya No 27	Pushkinska 41	61002	Kharkiv	UKRAINE

Appendix to Clinical Study Synopsis for study 11630

907	Miska Klinichna likarnya No 8	Kharkivska medychna akademia pislyadyplomnoi osvity Kafedra kardiologii ta funktsionalnoi diagnostyky Saltovske shosse 266	61176	Kharkiv	UKRAINE
908	Miska klinichne likarna#2	Pr. Kalinina 53	49000	Dnipropetrovsk	UKRAINE
909	Miska klinichne likarna#6	Pr. Komarova 3	01680	Kiev	UKRAINE
910	Miska klinichne likarna#7	Kotelnikova str 95	03195	Kiev	UKRAINE
911	Miska Kliniczna likarnya No9	Kafedra fakultetskoyi terapi ta endokrynologiyi Vorontsova prosp. 29	49044	Dniepropetrovsk	UKRAINE
912	Miska Likarnya no 4	Textylshchykiv 36	14000	Chernihiv	UKRAINE
913	Oblasna klinichna likarnya	Shevchenko str 23	36011	Poltava	UKRAINE
914	Oblasna klinichna likarnya	Klinichna 1	46000	Ternopil	UKRAINE
915	Oblasna Klinichna likarnya	Kafedra facultetskoyi terapii Vinnytskyi natsionalnyi medychnyi universytet Pyrogova 56	21018	Vinnitsa	UKRAINE
916	Oblasnyi diagnostychnyi centr	Kafedra hospitalnoyi terapiyi 2 Plekhanova 28	49044	Dniepropetrovsk	UKRAINE

Appendix to Clinical Study Synopsis for study 11630

917	Oblasnyi klinichnyi kardiologichnyi dyspanser	Kafedra Hospotalnoi terapii 1 Getmana Masepy 114	76025	Ivano-Frankivsk	UKRAINE
918	Psykhonevrologichna likarnia im. O.I. Iushchenko	Pirogova 109-A	21005	Vinnytsia	UKRAINE
919	Railway Clinical Hospital N12	Kafedra Propedevtyky vnutrishnikh khvorob 1 Povitrofloflotskyi pr 9	03049	Kiev	UKRAINE
920	Regional Cardiology Dispensary	Pobedy str. 78	69 000	Zaporozhye	UKRAINE
921	Respulikanska Klin. likarnya	Kafedra vnutrishnyoi medycyny 2 Kyiska 69	95017	Simferopol	UKRAINE
922	State Medical Academy	Dept. of Hospital Therapy N2 Sverdlova str. 65	49 006	Dnepropetrovsk	UKRAINE
923	State Medical University	Kafedra Vnutrishnikh khvorob Rosy Luxemburg 52A	83144	Donetsk	UKRAINE
924	TOV Kardiologichna klinika Sertse i sudyny	Zhylyanska str 69/71	01033	Kiev	UKRAINE
925	Zakarpatsky Oblasnyi Kardiologichnyi Dyspanser	Laboratoria elektrofijologii Timiriazeva 15	88000	Uzhgorod	UKRAINE
926	Zhytomyrska oblasna klinichna likarnya	Chervonogo Khresta 3	10002	Zhytomyr	UKRAINE
927	Aberdeen Royal Infirmary	Acute Stroke unit Ward 11 Foresterhill	AB25 2ZN	Aberdeen	UNITED KINGDOM

Appendix to Clinical Study Synopsis for study 11630

928	Chesterfield Royal Hospital	Calow	S44 5BL	Chesterfield	UNITED KINGDOM
929	City General Hospital	Ward 60	ST4 6QG	Stoke on Trent	UNITED KINGDOM
930	City Hospital	City Hospital Dudley Road	B18 7QH	Birmingham	UNITED KINGDOM
931	Colchester General Hospital	Cardiology Turner Road	CO4 5JL	Colchester	UNITED KINGDOM
932	Craigavon Area Hospital	68 Lurgan Road Portadown Craigavon	BT63 5QQ	Armagh	UNITED KINGDOM
933	Glenfield Hospital	Cardiology Department Groby Road	LE3 9PQ	Leicester	UNITED KINGDOM
934	Hull Royal Infirmary	Anlaby Road	HU3 2JZ	Hull	UNITED KINGDOM
935	Lincoln County Hospital	Johnson Ward Greetwell Road	LN2 5QY	Lincoln	UNITED KINGDOM
936	Newham General Hospital	Heather Ward St Andrews Wing Glen Road	E13 8SL	London	UNITED KINGDOM
937	Nottingham City Hospital	Division of Stroke Medicine Clinical Sciences Building City Hospital Campus	NG5 1PB	Nottingham	UNITED KINGDOM
938	Queens Hospital	Rom Valley Way	RM7 0AG	Romford	UNITED KINGDOM
939	Royal Hallamshire Hospital	Q15, Q Floor Glossop Road	S10 2JF	Sheffield	UNITED KINGDOM
940	Southern General Hospital	Department of Cardiology 1345 Govan Road	G51 4F	Glasgow	UNITED KINGDOM
941	Stirling Royal Infirmary	Stroke Team C/O Day Hospital Livilands	FK8 2AU	Stirling	UNITED KINGDOM

Appendix to Clinical Study Synopsis for study 11630

942	St Thomas' Hospital	North Wing St Thomas Hospital Westminster Bridge Road	SE1 7EH	London	UNITED KINGDOM
943	The Institute of Cardiovascular Research	Stroke Study Centre Division of Medicine & Therapeutics	DD1 9SY	Dundee	UNITED KINGDOM
944	Torbay Hospital	Room 1 Vowden Hall	TQ2 7AA	Torbay	UNITED KINGDOM
945	University Hospital Aintree	Longmoor Lane	L9 7JU	Liverpool	UNITED KINGDOM
946	Western Infirmary	Division of Cardiovascular and Medical Services Gardiner Institute 44 Church Street	G11 6NT	Glasgow	UNITED KINGDOM
947	York General Hospital	Department of Elderly Medicine	YO31 8HE	York	UNITED KINGDOM
948	Abbott Northwestern Hospital	920 East 28th Street Suite 40	55407	Minneapolis	UNITED STATES
949	Advanced Cardiology Specialists	201 Franklin Avenue	18503-1911	Scranton	UNITED STATES
950	Advanced Cardiovascular Consultants	2525 24th Street	61201	Rock Island	UNITED STATES
951	Advanced Clinical Research	1000 Forrest Place Suite 2	35128	Pell City	UNITED STATES
952	Advanced Medical Research	5757 Monclova Road Suite 26	43537	Maumee	UNITED STATES
953	Advanced Neurology Specialists	400 15th Avenue South Suite 206	59405	Great Falls	UNITED STATES

Appendix to Clinical Study Synopsis for study 11630

954	Advocate Medical Group	Division of Cardiology 1875 W Dempster Street Suite 525	60068	Park Ridge	UNITED STATES
955	Alexandria Cardiology Clinic	501 Medical Center Drive Suite 250	71301	Alexandria	UNITED STATES
956	Alfieri Cardiology, PA	G-39 Omega Drive	19713	Newark	UNITED STATES
957	Altos Cardiovascular Associates	727 Altos Oaks Drive	94024	Los Altos	UNITED STATES
958	Anaconda Internal Medicine Clinic	1102 East Commercial Avenue	59711-2718	Anaconda	UNITED STATES
959	Aquilo Research	1485 Health Center Parkway	73099	Yukon	UNITED STATES
960	Arizona Pulmonary Specialists, Ltd.	500 West Thomas Road Suite 950	85013	Phoenix	UNITED STATES
961	Arrhythmia Center for Southern Wisconsin, Ltd.	100 South Washington Street	53121	Elkhorn	UNITED STATES
962	Arrhythmia Center for Southern Wisconsin, Ltd.	2901 W. Kinnickinnic River Pkwy. Suite 305	53215	Milwaukee	UNITED STATES
963	Arroyo Medical Group, Inc.	931 Oak Park Boulevard Suite 101	93449	Pismo Beach	UNITED STATES
964	Asheville Cardiology Associates, PA	5 Vanderbilt Park Drive	28802	Asheville	UNITED STATES
965	Associates in Cardiovascular Disease, LLC	211 Mountain Avenue	07081	Springfield	UNITED STATES

Appendix to Clinical Study Synopsis for study 11630

966	Athens Medical Group	1031 West Madison Avenue	37303	Athens	UNITED STATES
967	Aurora Burlington Clinic	248 McHenry Street	53105	Burlington	UNITED STATES
968	Aurora Denver Cardiology Associates	1601 East 19th Avenue Suite 5000	80218	Denver	UNITED STATES
969	Baptist Hospital of East Tennessee	Baptist Medical Tower 101 Blount Avenue Suite 300	37920	Knoxville	UNITED STATES
970	Bay Area Health Clinic, PC	3720 Katalin Court	48706	Bay City	UNITED STATES
971	Berks Cardiology, Ltd.	2605 Keiser Boulevard	19610	Wyomissing	UNITED STATES
972	Birmingham Heart Clinic, PC	.	35235	Birmingham	UNITED STATES
973	Bluestem Cardiology	3400 SE Frank Phillips Blvd. Suite 502	74006	Bartlesville	UNITED STATES
974	Bradenton Research Center	3924 9th Avenue West	34205	Bradenton	UNITED STATES
975	Bristol Regional Medical Center	1 Medical Park Boulevard	37620	Bristol	UNITED STATES
976	Brooke Army Medical Center	3851 Roger Brooke Drive	78234-6200	Fort Sam Houston	UNITED STATES
977	Broward Heart Group	7421 North University Drive Suite 101	33321	Tamarac	UNITED STATES
978	BryanLGH Medical Center East	BryanLGH Heart Institute 1600 South 48th Street Suite 600	68516	Lincoln	UNITED STATES

Appendix to Clinical Study Synopsis for study 11630

979	Buffalo Cardiology & Pulmonary Associates, PC	6460 Main Street	14221	Williamsville	UNITED STATES
980	Buffalo Heart Group	3435 Bailey Avenue	14215	Buffalo	UNITED STATES
981	Capitol Interventional Cardiology	6347 Coyle Avenue	95608	Carmichael	UNITED STATES
982	Cardiac Study Center, Inc.	1901 South Cedar Suite 301	98405	Tacoma	UNITED STATES
983	Cardiology Associates	900 Medical Village Drive	41017	Edgewood	UNITED STATES
984	Cardiology Associates Medical Group	5555 Reservoir Drive Suite 209	92190	San Diego	UNITED STATES
985	Cardiology Associates of Corpus Christi	1521 South Staples Suite 700	78404	Corpus Christi	UNITED STATES
986	Cardiology Associates of New Haven	1591 Boston Post Road Suite 202	06437	Guilford	UNITED STATES
987	Cardiology Associates of North Jersey	1777 Hamburg Turnpike Suite 102	07470	Wayne	UNITED STATES
988	Cardiology Associates of Northwest Indiana, PC	5500 Hohman Avenue Suite 2-G	46320	Hammond	UNITED STATES
989	Cardiology Associates of Somerset County, PA	745 Rte. 202/206 South	08808	Bridgewater	UNITED STATES
990	Cardiology Associates, PC	Black Hills Clinical Research Center 4150 5th Street	57701	Rapid City	UNITED STATES
991	Cardiology Care Center	1355 South International Drive Suite 1481	32795	Lake Mary	UNITED STATES

Appendix to Clinical Study Synopsis for study 11630

992	Cardiology Consultants	368 Lakehurst Road Suite 301	08755	Toms River	UNITED STATES
993	Cardiology Consultants of Danville	159 Executive Drive Suite K	24541	Danville	UNITED STATES
994	Cardiology Consultants of Orange County	1801 West Romneya Drive Suite 402	92801	Anaheim	UNITED STATES
995	Cardiology Consultants, PA	695 North Clyde Morris Blvd.	32114	Daytona Beach	UNITED STATES
996	Cardiovascular Associates of the Delaware Valley	210 West Atlantic Avenue	08035	Haddon Heights	UNITED STATES
997	Cardiovascular Associates of the Delaware Valley	525 State Street Suite 3	08318	Elmire	UNITED STATES
998	Cardiovascular Associates of Virginia	681 Hioaks Road Suite H	23225	Richmond	UNITED STATES
999	Cardiovascular Association, PLLC	18955 Memorial North Suite 580	77338	Humble	UNITED STATES
1000	Cardiovascular Clinic of Texas	610 Lawrence Street Suite-A	77375	Tomball	UNITED STATES
1001	Cardiovascular Consultants Medical Group, Inc.	365 Hawthorne Avenue Suite 201	94609	Oakland	UNITED STATES
1002	Cardiovascular Consultants of Maine, PA	96 Campus Drive Suite 1	04074	Scarborough	UNITED STATES
1003	Cardiovascular Institute of the South	1233 Wayne Gilmore Circle Suite 450	70570	Opelousas	UNITED STATES

Appendix to Clinical Study Synopsis for study 11630

1004	Cardiovascular Research Institute, LLC	2600 Sixth Street SW Suite A2-710	44710	Canton	UNITED STATES
1005	Cardiovascular Research Institute of Dallas	7150 Greenville Avenue Suite 650	75321	Dallas	UNITED STATES
1006	Cardiovascular Research of Northwest Indiana	10010 Donald Powers Drive	46321	Munster	UNITED STATES
1007	C.A.R.E. Clinical Research	533 Couch Avenue Suite 140	63122	St. Louis	UNITED STATES
1008	CaRE Foundation	500 Wind Ridge Drive Suite 101	54452	Wausau	UNITED STATES
1009	Centennial Heart Cardiovascular Consultants	Physicians Park 2400 Patterson Street Suite 502	37203	Nashville	UNITED STATES
1010	Centra Health Cardiovascular Group	2410 Atherholt Road	24501	Lynchburg	UNITED STATES
1011	Central Bucks Specialists	599 West State Street Suite 200	18901	Doylestown	UNITED STATES
1012	Central Florida Cardiology Group	1745 North Mills Ave	32803	Orlando	UNITED STATES
1013	Charlotte Cardiovascular Institute, P.A.	4161 Tamiami Trail Suite 701	33952	Port Charlotte	UNITED STATES
1014	Chattanooga Heart Institute	949 East 3rd Street Suite C-0925	37103	Chattanooga	UNITED STATES
1015	Chelsea Internal Medicine	128 Van Buren Street	48118	Chelsea	UNITED STATES
1016	Chesapeake Cardiac Care	888 Bestgate Road Suite 215	21401	Annapolis	UNITED STATES
1017	Citrus Cardiology Consultants, P.A.	308 W. Highland Boulevard	34452	Inverness	UNITED STATES

Appendix to Clinical Study Synopsis for study 11630

1018	Clearwater Cardiovascular & Interventional Consultants	455 Pinellas Street Suite 400	33756	Clearwater	UNITED STATES
1019	Clearwater Cardiovascular & Interventional Consultants	Countryside Office 1840 Mease Drive Suite 202	34695	Safety Harbor	UNITED STATES
1020	Clearwater Cardiovascular & Interventional Consultants	8839 Bryan Dairy Road Suite 300	33777	Largo	UNITED STATES
1021	Clinical Research Limited	4565 Dressler Drive NW Suite 103	44718	Canton	UNITED STATES
1022	Community Clinical Research Center	1622 N Madison Avenue Suite 300	46011	Anderson	UNITED STATES
1023	Comprehensive Cardiology Consultants, Inc.	7370 Turfway Road Suite 109	41042	Florence	UNITED STATES
1024	Comprehensive Cardiovascular Medical Group	5945 Truxtun Avenue	93309	Bakersfield	UNITED STATES
1025	Creighton Cardiac Center	3006 Webster Street	68131	Omaha	UNITED STATES
1026	CVMS Research Institute, LLC	500 University Boulevard Suite 208	33458	Jupiter	UNITED STATES
1027	Danbury Hospital	24 Hospital Avenue	06810	Danbury	UNITED STATES
1028	Deaconess Medical Center	800 West Fifth Avenue	99204	Spokane	UNITED STATES
1029	Deerfield Beach Cardiology Associates	1874-D W.Hillsboro Boulevard	33321	Deerfield Beach	UNITED STATES

Appendix to Clinical Study Synopsis for study 11630

1030	Des Peres Hospital	2325 Dougherty Ferry Road Suite 205	63122	St. Louis	UNITED STATES
1031	Diagnostic Cardiology Associates, PA	1824 King Street Suite 300	32204	Jacksonville	UNITED STATES
1032	Drexel University College of Medicine	Cardiology Department 245 N 15th Street 6122 NCB MS 470	19102	Philadelphia	UNITED STATES
1033	Duke University Medical Center	Erwin Road PG-2	27710	Durham	UNITED STATES
1034	Durham Veteran Affairs Medical Center	508 Fulton Street Room B-3001 Mail Code 111-A	27705	Durham	UNITED STATES
1035	East Carolina Medical Associates	Adult Clinic and Geriatric Center 25 Office Park Drive	28546	Jacksonville	UNITED STATES
1036	Eastern Idaho Medical Consultants	3200 Channing Way Suite 205	83404	Idaho Falls	UNITED STATES
1037	Eastern Research	760 East 49th Street	33013	Hialeah	UNITED STATES
1038	Eastwick Primary Care, PC	2801 South Island Avenue	19153	Philadelphia	UNITED STATES
1039	Emory University	University Hospital F-424 1364 Clifton Road NE	30322	Atlanta	UNITED STATES
1040	Evergreen Medical, Ltd.	2850 West 95th Street Suite 403	60805	Evergreen Park	UNITED STATES
1041	Executive Health & Research Associates	5505 Peachtree Dunwoody Rd. Suite 650	30342	Atlanta	UNITED STATES

Appendix to Clinical Study Synopsis for study 11630

1042	First Coast Cardiovascular Institute	3900 University Boulevard S.	32216	Jacksonville	UNITED STATES
1043	First Coast Cardiovascular Institute	1681 Eagle Harbor Pkwy. E Suite-B	32003	Orange Park	UNITED STATES
1044	Fletcher Allen Health Care	111 Colchester Avenue	05401-1420	Burlington	UNITED STATES
1045	Florida Cardiovascular Institute	509 S. Armenia Avenue Suite 200	33606	Tampa	UNITED STATES
1046	Florida Heart Associates	1550 Barkley Circle	33907	Fort Myers	UNITED STATES
1047	Florida Hospital Orlando	Florida Heart Institute 1900 North Mills Avenue	32803	Orlando	UNITED STATES
1048	Florida Institute for Cardiology	3702 Washington Street Suite 401	33021	Hollywood	UNITED STATES
1049	Foothills Internal Medicine	1648 Gentry Memorial Hwy.	29640	Easley	UNITED STATES
1050	Fox Valley Clinical Research Center, LLC	2088 Ogden Avenue Suite 180	60504	Aurora	UNITED STATES
1051	FPA Clinical Research	445 West Oak Street Suite-A	34741	Kissimmee	UNITED STATES
1052	Franciscan Skemp - La Crosse Campus	700 West Avenue South	54601	La Crosse	UNITED STATES
1053	Frandsen Family Medicine	450 S. Kitsap Boulevard Suite 1200	98366	Port Orchard	UNITED STATES
1054	Gage County Medical Clinic, P.C.	1101 North 10th Street	68310	Beatrice	UNITED STATES
1055	Geisinger Community Practice - Knapper Clinic	Dept. of Cardiology 100 North Academy Avenue	17822-2160	Danville	UNITED STATES

Appendix to Clinical Study Synopsis for study 11630

1056	Geisinger Community Practice - Knapper Clinic	Dept. of Cardiology 100 North Academy Avenue	17822-2160	Danville	UNITED STATES
1057	Geisinger Community Practice - Knapper Clinic	Dept. of Cardiology 100 North Academy Avenue	17822-2160	Danville	UNITED STATES
1058	Geisinger Community Practice - Scenery Park	200 Scenery Drive	16801	State College	UNITED STATES
1059	Geisinger Medical Center	Department of Cardiology 100 North Academy Avenue	17822-2160	Danville	UNITED STATES
1060	Georgia Health Sciences University	Research Institute 1521 Pope Avenue	30912	Augusta	UNITED STATES
1061	Georgia Health Sciences University	950 15th Street	30912	Augusta	UNITED STATES
1062	Good Samaritan Hospital & Health Ctr	2222 Philadelphia Drive	45406-1813	Dayton	UNITED STATES
1063	Gottlieb Memorial Hospital	675 West North Avenue Suite 210	60160	Melrose Park	UNITED STATES
1064	Green & Seidner Family Practice	826 North Broad Street	19446-2321	Lansdale	UNITED STATES
1065	Harbor - UCLA Medical Center	Research & Education Institute RB2, 3rd floor 1124 W Carson St.	90502	Torrance	UNITED STATES
1066	Harborview Medical Center	325 9th Avenue	98104-2499	Seattle	UNITED STATES
1067	Healthcare, PC	9522 East San Salvador Suite 319	85258	Scottsdale	UNITED STATES

Appendix to Clinical Study Synopsis for study 11630

1068	Heart Care Center	4939 Brittonfield Parkway Suite 202	13057	East Syracuse	UNITED STATES
1069	Heart Center	1160 East 3900 S Suite 2000	84124	Salt Lake City	UNITED STATES
1070	Heart Center of North Texas	1017 12th Avenue	76104	Fort Worth	UNITED STATES
1071	Heartland Research	1770 Engleside Street	70601	Lake Charles	UNITED STATES
1072	Heights Primary Care	318 White Horse Pike	08035	Haddon Heights	UNITED STATES
1073	Hillcroft Medical Clinic	2500 Fondren Road Suite 250	77063	Houston	UNITED STATES
1074	Holston Valley Medical Center	The Heart Center 2050 Meadow View Parkway	37660	Kingsport	UNITED STATES
1075	HPV Heart, PA	11085 Little Patuxent Parkway Suite 101	21044	Columbia	UNITED STATES
1076	Hudson Valley Hospital Center	Cardiology 1985 Crompond Road	10567	Cortlandt Manor	UNITED STATES
1077	Idaho Cardiology Associates	6140 West Curtisian Avenue Suite 200	83704	Boise	UNITED STATES
1078	Illinois Heart and Vascular Foundation	3118 North Ashland Avenue	60657	Chicago	UNITED STATES
1079	Inland Heart Doctor's Medical Group	854 Magnolia Avenue Suites 1 & 201	92879	Corona	UNITED STATES
1080	Jackson-Madison County General Hospital	327 Summar Drive	38301	Jackson	UNITED STATES

Appendix to Clinical Study Synopsis for study 11630

1081	Jackson Memorial Hospital	North Wing/Room 216 1611 NW 12th Avenue	33136	Miami	UNITED STATES
1082	Jacksonville Center for Clinical Research	4085 University Blvd. South Suite 1	32216	Jacksonville	UNITED STATES
1083	John H Stroger Jr. Hospital of Cook County (Cook Cty. Hosp.)	Adult Cardiology 1901 W. Harrison Ste. 3620	60612	Chicago	UNITED STATES
1084	Kaiser Permanente Oakland Medical Center	2000 Broadway Street 3rd Floor	94612	Oakland	UNITED STATES
1085	Kaiser Permanente Oakland Medical Center	2000 Broadway Street 3rd Floor	94612	Oakland	UNITED STATES
1086	Knight Center for Integrated Health	6811 N. Knoxville Avenue Suite-A	61614	Peoria	UNITED STATES
1087	LeBauer Cardiovascular Research Foundation	618 South Main Street	27320	Reidsville	UNITED STATES
1088	LeBauer HeartCare	1126 North Church Street Suite 300	27401	Greensboro	UNITED STATES
1089	Lexington Medical Clinic	1026 Main Street	64067	Lexington	UNITED STATES
1090	LGL Cardiology Consultants	407 East Avenue Suite 105	02860	Pawtucket	UNITED STATES
1091	Little Rock Cardiology Clinic, PA	7 Shackleford West Boulevard	72211	Little Rock	UNITED STATES
1092	Madigan Army Medical Center	Cardiology Services 9040A Fitzsimmons Avenue MCHJ-MCD	98431	Tacoma	UNITED STATES

Appendix to Clinical Study Synopsis for study 11630

1093	Magnolia Research Group, Inc.	2203 Sw 3rd Avenue	34471	Ocala	UNITED STATES
1094	Maricopa Medical Center	Department of Medicine 6th Floor 2601 East Roosevelt Street	85008-4956	Phoenix	UNITED STATES
1095	Medical Associates of General Hospital	1030 Harrington Street	48036	Mount Clemens	UNITED STATES
1096	Medical Group of Texas	1001 12th Avenue Suite 160	76104	Fort Worth	UNITED STATES
1097	Medical Research Incorporated of Las Vegas	9280 West Sunset Road Suite 320	89148	Las Vegas	UNITED STATES
1098	Medicor Cardiology	225 Jackson Street	08807	Bridgewater	UNITED STATES
1099	MedTrials, Inc.	1730 North Center Street	28601	Hickory	UNITED STATES
1100	Memorial Medical Group	900 I Street	46350	La Porte	UNITED STATES
1101	Memphis Heart Clinic	6025 Walnut Grove Road Suite 111	38120	Memphis	UNITED STATES
1102	Mercy Hospital Fairfield	Fairfield Cardiac Cath. Lab 3000 Mack Road Suite 200	45014	Fairfield	UNITED STATES
1103	Mercy Hospital Springfield	St. John's Medical Research 3231 S National Avenue	65807	Springfield	UNITED STATES
1104	MeritCare Hospital	720 4th Street North	58122	Fargo	UNITED STATES

Appendix to Clinical Study Synopsis for study 11630

1105	Methodist Cardiology Physicians	Methodist Professional Center Building 1-Suite 310 1801 N. Senate Boulevard	46202	Indianapolis	UNITED STATES
1106	Metropolitan Cardiovascular Consultants	10756 Rhode Island Avenue	20705	Beltsville	UNITED STATES
1107	Mid-Ohio Heart Clinic, Inc.	680 Park Avenue West	44906	Mansfield	UNITED STATES
1108	Midtown Medical Center	7171 North Dale Mabry Hwy. Suite 501	33614	Tampa	UNITED STATES
1109	Midwest Heart Foundation	1919 South Highland Avenue Suite 201-B	60148	Lombard	UNITED STATES
1110	Minneapolis VA Medical Center	1 Veteran's Drive	55417	Minneapolis	UNITED STATES
1111	Mission Internal Medical Group, Inc.	26800 Crown Valley Parkway Suite 120	92691	Mission Viejo	UNITED STATES
1112	Mobile Heart Specialists, PC	6701 Airport Boulevard Suite A-107	36608	Mobile	UNITED STATES
1113	Moffitt Heart & Vascular Group	1000 Front Street	17043	Wormleysburg	UNITED STATES
1114	Montefiore Medical Center	Moses Division 111 East 210th Street	10467-2490	Bronx	UNITED STATES
1115	Munson Medical Center	1105 Sixth Street	49684	Traverse City	UNITED STATES
1116	Nebraska Heart Institute	7440 South 91st Street	68526	Lincoln	UNITED STATES
1117	Neurology Specialists of Savannah	6602 Waters Avenue Building-C	34106	Savannah	UNITED STATES

Appendix to Clinical Study Synopsis for study 11630

1118	New Mexico Heart Institute	502 Elm Street NE	87102	Albuquerque	UNITED STATES
1119	New York Cardiovascular Associates	275 Seventh Avenue 3rd Floor	10011	New York	UNITED STATES
1120	New York Methodist Hospital	Buckley Pavilion 2nd Floor 506 Sixth Street	11215	Brooklyn	UNITED STATES
1121	NJ Heart	520 North Wood Avenue	07036	Linden	UNITED STATES
1122	Northeast Cardiology Associates	1 Northeast Drive	04401	Bangor	UNITED STATES
1123	Northeast Iowa Medical Education Foundation	2055 Kimball Avenue	50702	Waterloo	UNITED STATES
1124	Northern California Cardiology Associates	5301 F Street Suite 114	95819	Sacramento	UNITED STATES
1125	Northern Michigan Regional Hospital	405 North Division Road Suite 3	49770	Petoskey	UNITED STATES
1126	North Mississippi Medical Center - Tupelo	Cardiology Assoc. of N.Mississippi 3rd Floor/East Tower 830 South Gloster Street	38801	Tupelo	UNITED STATES
1127	Northport VA Medical Center	79 Middleville Road Building 200	11768	Northport	UNITED STATES
1128	North Shore Cardiologists	2151 Waukegan Road Suite 100	60015	Bannockburn	UNITED STATES
1129	Northside Hospital	1000 Johnson Ferry Road	30342	Atlanta	UNITED STATES
1130	North Texas Medical Research	6020 West Parker Road Suite 420	75093	Plano	UNITED STATES

Appendix to Clinical Study Synopsis for study 11630

1131	Northwest Medical Associates	222 NE Park Plaza Drive Suite 100	98684	Vancouver	UNITED STATES
1132	Northwest Ohio Cardiology Consultants	2940 North McCord Road	43615	Toledo	UNITED STATES
1133	Nova Southeastern University	College of Osteopathic Medicine 3200 South University Drive	33328	Ft. Lauderdale	UNITED STATES
1134	NY Cardiovascular Specialist, PC	1827 Madison Avenue	10035	New York	UNITED STATES
1135	Oakland Medical Center	115 E. Long Lake Road	48085	Troy	UNITED STATES
1136	Ochsner Foundation Hospital	Cardiology Section 1514 Jefferson Highway	70121	New Orleans	UNITED STATES
1137	Office of Dr. Abdulhay Albirini, MD	751 Forest Avenue Suite 301	43701	Zanesville	UNITED STATES
1138	Office of Dr. Arthur Belber, MD	Montgomery Professional Bldg. 1330 Powell Street Suite 301	19406	Noristown	UNITED STATES
1139	Office of Dr. Edward Hoffer, MD	655 Concord Street	01702	Framingham	UNITED STATES
1140	Office of Dr. Jeffrey Askew, MD	1201 Sam Perry Boulevard Suite 280	22401	Fredericksburg	UNITED STATES
1141	Office of Dr. John Simmons, MD	915 West Hospital Drive	36340	Geneva	UNITED STATES
1142	Office of Dr. Mancel Wakham, DO	2497 S. Roane Street Suite 240	37748	Harriman	UNITED STATES
1143	Office of Dr. Paul Donnan, MD	2402 Osler Court	31707-0205	Albany	UNITED STATES

Appendix to Clinical Study Synopsis for study 11630

1144	Office of Dr. Paul McLaughlin, MD	250 Foxglove Drive Suite 8	40353	Mt. Sterling	UNITED STATES
1145	Office of Dr. Raynaldo Sandoval, MD	630 S. Rancho Drive	89106	Las Vegas	UNITED STATES
1146	Office of Dr. Suresh Chandrasekaran, MD	8121 National Avenue Suite 200	73110	Midwest City	UNITED STATES
1147	Office of Dr. William Bowden, MD	421 March Avenue Suite-A	95448	Healdsburg	UNITED STATES
1148	Office of Dr. Z. Gregg Seymour, MD	803 North Fant Street Suite 2B	29621	Anderson	UNITED STATES
1149	Oklahoma Cardiovascular Research	4200 W Memorial Road Suite 510	73120	Oklahoma City	UNITED STATES
1150	Orange County Heart Institute & Research Center	1140 West LaVeta Avenue Suite 640	92868	Orange	UNITED STATES
1151	Ormond Medical Arts Family Practice	77 W Granada Boulevard	32174	Ormond Beach	UNITED STATES
1152	Owensboro Medical Health System	1200 Breckenridge Street Suite 101	42303	Owensboro	UNITED STATES
1153	Palm Beach Gardens Medical Center	3370 Burns Road Suite 205	33410	Palm Beach Gardens	UNITED STATES
1154	Palm Harbor Medical Associates	3820 Tampa Road Suites 102 & 202	34684	Palm Harbor	UNITED STATES
1155	Parkview Medical Center	400 West 16th Street	81003	Pueblo	UNITED STATES
1156	Pasco Cardiology Center	14153 Yosemite Drive Suite 202	34667	Hudson	UNITED STATES

Appendix to Clinical Study Synopsis for study 11630

1157	Peninsula Cardiology Associates	400 Eastern Shore Drive	21804	Salisbury	UNITED STATES
1158	Permian Research Foundation	315 East 5th Street	79761	Odessa	UNITED STATES
1159	PharmaTex Research, LLC	5211 West 9th Street Suite 150	79106	Amarillo	UNITED STATES
1160	Philadelphia Health Associates	2115 South Street 2nd Floor	19146	Philadelphia	UNITED STATES
1161	Phoenix Heart PLLC	4425 W. Olive Ave Ste 200	85032	Phoenix	UNITED STATES
1162	Physician Group Practice At Mercy	1524 12th Avenue Road	83686	Nampa	UNITED STATES
1163	Piedmont Healthcare	208 Old Mocksville Road	28625	Statesville	UNITED STATES
1164	Plaza Medical Group, PC	3433 NW 56th Suite 400	73112	Oklahoma City	UNITED STATES
1165	Portage Medical Group	3575 Portage Avenue	46628	South Bend	UNITED STATES
1166	Primary Care Associates	523 Cape Coral Parkway	33904	Cape Coral	UNITED STATES
1167	Professional HealthCare of Pinellas	2763 First Avenue North	33713	St. Petersburg	UNITED STATES
1168	Quincy Medical Group	1025 Maine Street	62310	Quincy	UNITED STATES
1169	Raleigh Cardiology Associates, PA	3000 New Bern Avenue Suite 1200	27610	Raleigh	UNITED STATES
1170	Ralph H. Johnson VA Medical Center	109 Bee Street	29401-5799	Charleston	UNITED STATES
1171	Ritchken & First, MDs	4282 Genesee Avenue Suite 103	92117	San Diego	UNITED STATES

Appendix to Clinical Study Synopsis for study 11630

1172	Rockford Cardiology Associates	Research Foundation 444 Roxbury Road	61107	Rockford	UNITED STATES
1173	Sacramento Heart	500 University Avenue	95825	Sacramento	UNITED STATES
1174	Sacramento Medical Research Center	5440 Laurel Hills Drive	95841	Sacramento	UNITED STATES
1175	Saint Mary's Medical Center	900 East Oak Hill Avenue Suite 600	37917	Knoxville	UNITED STATES
1176	Samaritan Center for Medical Research	15100 Los Gatos Boulevard	95032	Los Gatos	UNITED STATES
1177	Santa Rosa Cardiology Medical Group	500 Doyle Park Suite 205	95494	Santa Rosa	UNITED STATES
1178	Saratoga Cardiology Associates	6 Care Lane	12866	Saratoga Springs	UNITED STATES
1179	Scottsdale Cardiovascular Research Institute	7285 East Earll Drive Building C	85251	Scottsdale	UNITED STATES
1180	Sewickley Valley Medical Group Cardiology	12 Quaker Village Shopping Center Ohio River Boulevard Suite 2-A	15056	Leetsdale	UNITED STATES
1181	Shands Jacksonville Medical Center	Tower One 8th Floor 580 W. 8th Street	32209	Jacksonville	UNITED STATES
1182	Shea Medical Center	Scottsdale Healthcare 9003 East Shea Boulevard	85260	Scottsdale	UNITED STATES
1183	South Denver Cardiology Associates, PC	1000 Southpark Drive	80120	Littleton	UNITED STATES

Appendix to Clinical Study Synopsis for study 11630

1184	Southeast Regional Research Group	2525 Williams Road	31904	Columbus	UNITED STATES
1185	Southeast Texas Clinical Research Center	2693 North St	77702	Beaumont	UNITED STATES
1186	Southern California Cardiology Medical Group	6386 Alvarado Court Suite 101	92120	San Diego	UNITED STATES
1187	Southern Clinic	1901 Melba Drive	36301	Dothan	UNITED STATES
1188	South Texas Cardiovascular Center	4330 Medical Drive Suite 575	78229	San Antonio	UNITED STATES
1189	South Texas Cardiovascular Center	710 Water Street Suite 400	78028	Kerrville	UNITED STATES
1190	South Texas Institutes of Health	304 Lindbergh Avenue	78501	McAllen	UNITED STATES
1191	Southwestern Medical Clinic, PC	9625 Red Arrow Highway	49106	Bridgman	UNITED STATES
1192	Southwest Heart	6367 East Tanquer Verde	85718	Tucson	UNITED STATES
1193	Sparks Regional Medical Center	1311 South I Street	72901	Fort Smith	UNITED STATES
1194	Springfield Clinic	326 North 7th Street	62710	Springfield	UNITED STATES
1195	Stern Cardiovascular Center	8060 Wolf River Boulevard	38138	Germantown	UNITED STATES
1196	St. Joseph's Hospital of Atlanta	Research Institute 5669 Peachtree Dunwoody Road Suite 170	30342	Atlanta	UNITED STATES
1197	St. Luke's Cardiology Associates	618 Delaware Avenue	18015	Bethlehem	UNITED STATES

Appendix to Clinical Study Synopsis for study 11630

1198	Sugar Land Cardiology Associates	3527 Town Center Blvd. South	77479	Sugar Land	UNITED STATES
1199	Sugar Land Cardiology Associates	3527 Town Center Blvd. South	77479	Sugar Land	UNITED STATES
1200	SUNY University Hospital/Health Science Center	Department of Cardiology HSC-T16-080	11794-8167	Stony Brook	UNITED STATES
1201	Sutter Gould Medical Foundation	1409 Briggsmore Avenue	95355	Modesto	UNITED STATES
1202	Tallahassee Research Institute	1300 Medical Drive	32308	Tallahassee	UNITED STATES
1203	Texas Cardiac Center	3710 21st Street	79410	Lubbock	UNITED STATES
1204	Texas Cardiology Associates	2627 Chestnut Ridge Suite 100	77339	Kingwood	UNITED STATES
1205	Texas Tech University	Health Sciences Center 3601 4th Street Mail Stop 9410	79430	Lubbock	UNITED STATES
1206	The Bracane Company	1545 K Avenue Suite 167	75074	Plano	UNITED STATES
1207	The Heart Center of Eastern Carolina	1300 Health Drive	28560	New Bern	UNITED STATES
1208	The Heart Center of Lake County	5800 Broadway Ste. A-J	46410	Merrillville	UNITED STATES
1209	The Heart Group, PC	Preventive Cardiology & Research 6701 Airport Boulevard Suite B-316	36608	Mobile	UNITED STATES
1210	The Oregon Clinic	1111 NE 99th Avenue Suite 201	97220	Portland	UNITED STATES

Appendix to Clinical Study Synopsis for study 11630

1211	Therapeutic Research Institute of Orange County	24953 Paseo de Valencia	92653	Laguna Hills	UNITED STATES
1212	The Toledo Clinic, Inc.	Department of Cardiology 4235 Secor Road	43623	Toledo	UNITED STATES
1213	Thoracic Cardiovascular Institute	405 W Greenlawn Avenue Suite 425	48910	Lansing	UNITED STATES
1214	Tipton Medical & Diagnostic Center	#334 Route 220	16684	Tipton	UNITED STATES
1215	Trinity Hospital	315 South Main Street Suite 315	58702	Minot	UNITED STATES
1216	Tri-State Cardiology, PC	2408 Susannah Street Suite 1	37601	Johnson City	UNITED STATES
1217	TriState Medical Group, Inc.	Cardiology 605 Sharon Road	15009	Beaver	UNITED STATES
1218	UCLA Medical Center-Olive View	Room 2C-121 14445 Olive View Drive	91342	Sylmar	UNITED STATES
1219	University of Cincinnati	Division of Cardiology 231 Albert Sabin Way ML-0542	45267-0542	Cincinnati	UNITED STATES
1220	University of Kentucky	University Hospital 326 Charles T. Worthington Bldg. 900 South Limestone Street	40536	Lexington	UNITED STATES
1221	University of Texas Health Science Center	7703 Floyd Curl Drive 5.4 MCD	78229	San Antonio	UNITED STATES

Appendix to Clinical Study Synopsis for study 11630

1222	University of Texas Southwestern Medical Center	5323 Harry Hines Boulevard	75390	Dallas	UNITED STATES
1223	University of Texas Southwestern Medical Center	HA9-133 5323 Harry Hines Blvd.	75390	Dallas	UNITED STATES
1224	VA Greater Los Angeles Healthcare System	Division of Cardiology Bldg. 500/ Rm. 4458 11301 Wilshire Boulevard	90073	Los Angeles	UNITED STATES
1225	VA Long Beach Healthcare System	5901 East 7th Street	90822-5201	Long Beach	UNITED STATES
1226	VA Pittsburgh Healthcare System	Department of Cardiology (111C-U) University Drive C	15240	Pittsburgh	UNITED STATES
1227	Ventura Cardiology Consultants Medical Group, Inc.	100 North Brent Street Suite 301	93003	Ventura	UNITED STATES
1228	Victoria Heart and Vascular Center	1707 East Red River Street	77901	Victoria	UNITED STATES
1229	Villafria Family Practice	209 South 5th Street	60970	Watseka	UNITED STATES
1230	Virginia Research Institute	505 Rison Street	24541	Danville	UNITED STATES
1231	VNH Heart Center Research	2484 Caring Way Suite B	33952	Port Charlotte	UNITED STATES
1232	Wayne State University	4201 St. Antoine Blvd. UHC 8C	48201	Detroit	UNITED STATES

Appendix to Clinical Study Synopsis for study 11630

1233	Wilford Hall US Airforce Medical Center	Division of Cardiology 759 MSGS/MCCC 2200 Berquist Drive	78236	Lackland AFB	UNITED STATES
1234	Clinica D'Empaire	Avenida Fuerzas Armadas con Circunvalación 2. Consultorio. 2-8.	4201	Maracaibo	VENEZUELA
1235	Policlinica Maracay	Calle López Aveledo #5. Policlinica Maracay PB #3. Urb. Calicanto.	2101	Maracay	VENEZUELA
1236	Policlinica Santiago De Leon	Avenida Libertador. Edificio Libertador 75.	1050	Caracas	VENEZUELA
1237	Unidad de Prevención Cardiovascular	Avenida San Felipe Torre Coinasa, PH Sur. La Castellana	1061	Caracas	VENEZUELA

Product Identification Information

Product Type	Drug
US Brand/Trade Name(s)	Xarelto
Brand/Trade Name(s) ex-US	Xarelto
Generic Name	rivaroxaban
Main Product Company Code	BAY59-7939
Other Company Code(s)	
Chemical Description	IUPAC Name: 5-Chloro-N-({(5S)-2-oxo-3-[4-(3-oxo-4-morpholinyl)phenyl]-1,3-oxazolidin-5-yl)methyl)-2-thiophenecarboxamide
Other Product Aliases	

Date of last Update/Change:

04 Mar 2013