

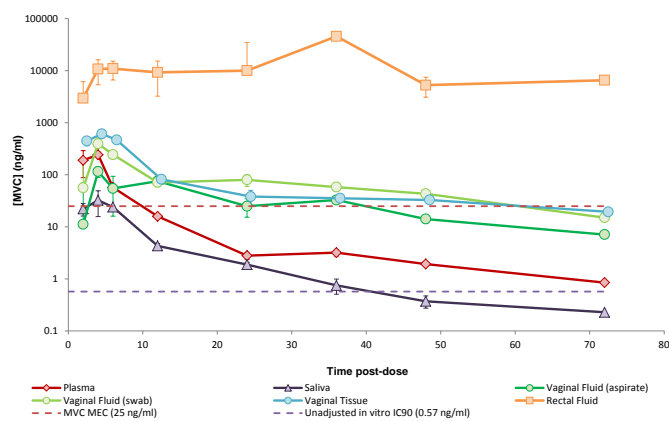
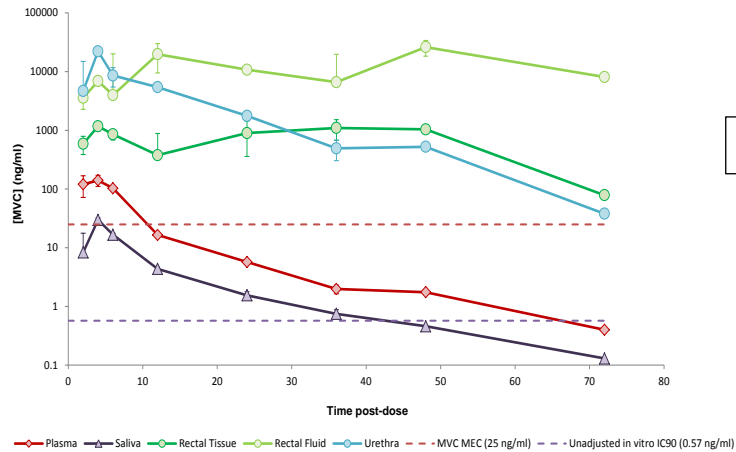
Table 1c. Male and female pharmacokinetic parameters in all compartments following a single dose of maraviroc 300 mg. P values in bold type are significantly different to the plasma compartment.

	Male				Female			
Compartment	AUC <sub>0-72</sub> (ng.h/ml)	95%CI	Ratio (vs. plasma)	p value (z test)	AUC <sub>0-72</sub> (ng.h/ml)	95%CI	Ratio (vs. plasma)	p value (z test)
Plasma	1212	830-1594			1353	876-1829		
Saliva	220	170-269	0.18	<b>&lt;0.0001</b>	285	137-433	0.21	<b>&lt;0.0001</b>
Rectal Fluid	991868	396703-1587033	818.51	<b>&lt;0.01</b>	996496	367801-1625191	736.75	<b>&lt;0.01</b>
Rectal Tissue	53950	31012-76888	44.52	<b>&lt;0.0001</b>				
Urethra	173965	96354-251576	143.56	<b>&lt;0.0001</b>				
Vaginal Fluid (aspirate)					2182	1211-3153	1.61	>0.05
Vaginal Fluid (swab)					5134	3774-6493	3.80	<b>&lt;0.0001</b>
Vaginal Tissue					6537	5052-8023	4.83	<b>&lt;0.0001</b>
Compartment	C <sub>max</sub> (ng/ml)	95%CI	Ratio (vs. plasma)	p value (z test)	C <sub>max</sub> (ng/ml)	95%CI	Ratio (vs. plasma)	p value (z test)
Plasma	141	46-236			242	43-441		
Saliva	30	11-48	0.21	<0.05	32	21-44	0.13	<0.05
Rectal Fluid	26165	352-51977	185.78	<0.05	45654	-2722-94031	188.40	>0.05
Rectal Tissue	1174	779-1569	8.33	<b>&lt;0.0001</b>				

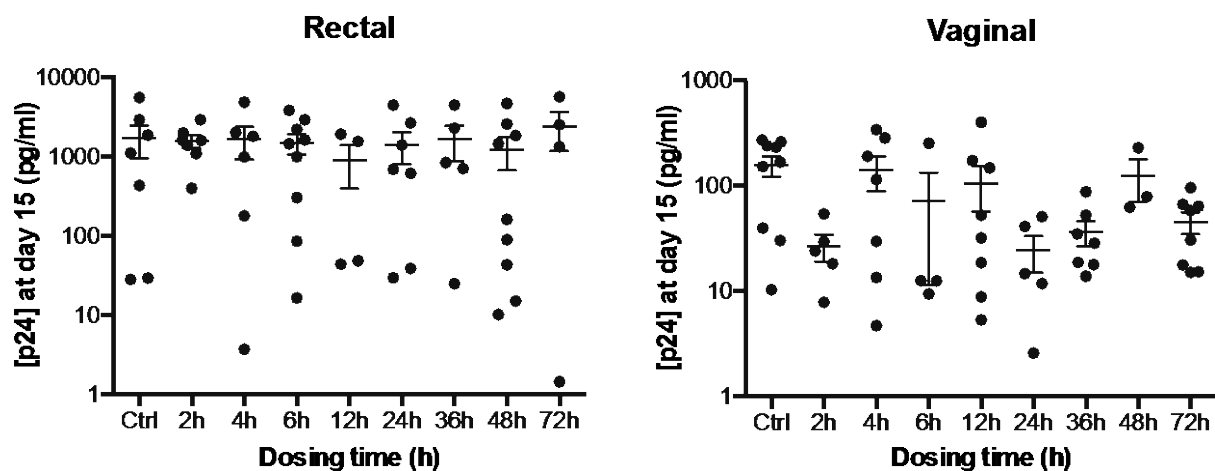
Urethra	22156	1993-42320	157.32	<0.05				
Vaginal Fluid (aspirate)					115	2-228	0.48	>0.05
Vaginal Fluid (swab)					395	184-605	1.63	>0.05
Vaginal Tissue					611	444-779	2.52	<b>&lt;0.01</b>

Number of samples (%) below the assay limit of quantification (LLQ): Plasma – 3/94 (3%); Saliva – 20/94 (21%); Rectal Fluid – 0/82 (0%); Rectal Tissue – 0/44 (0%); Urethra – 5/47 (11%); Vaginal Fluid, aspirate – 2/41 (5%); Vaginal Fluid, swab – 1/41 (2%); Vaginal Tissue – 9/42 (21%)

**Figure 1. Pharmacokinetic (1a/1b) /Pharmacodynamic (1c/1d) profile in multiple tissue compartments in HIV-negative men (1a/1c) and women (1b/1d) following a single dose of maraviroc 300 mg orally.**

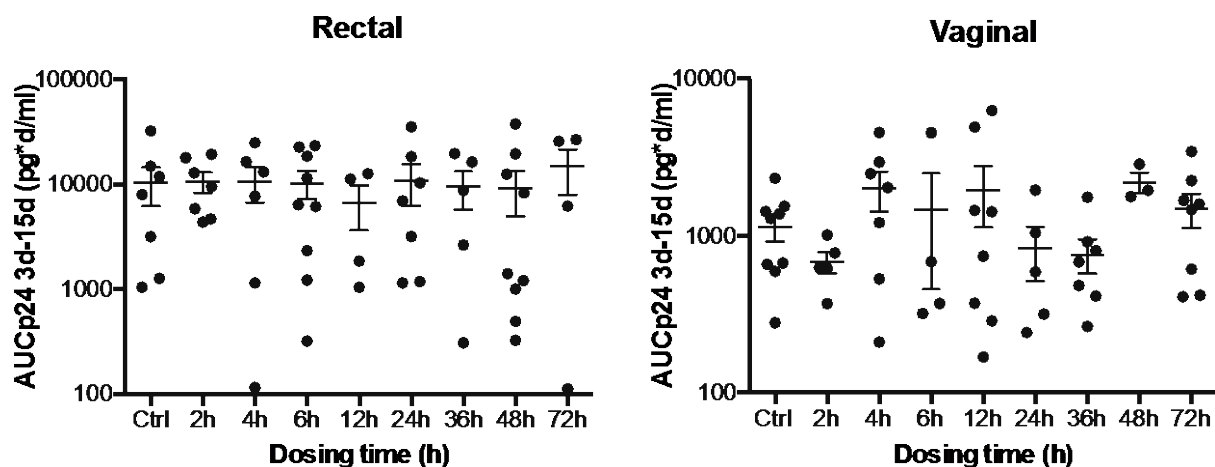


**1c and 1d: HIV protection using ex vivo challenge**



Legend figure 1: PK data are expressed as mean (sem). Tissue explants were exposed 2 h to virus and then washed four times with PBS prior to transfer to gelfoam rafts for rectal explants and to fresh culture plates for vaginal explants. Explants were kept in culture for 15 days. The concentrations of p24 in the harvested supernatants were quantified by ELISA at days 3, 7, 11 and 15 of culture. The p24 concentrations at day 15 (c, d) for rectal and vaginal explants, respectively, are shown for the control and each dosing arm. Points represent the mean of duplicates for each participant, and lines the mean ( $\pm$  SEM) of each arm.

**Figure S1. Pharmacodynamic profile in multiple tissue compartments in HIV-negative men (1a) and women (1b) following a single dose of maraviroc 300 mg orally.**



Legend figure S1: Tissue explants were exposed 2 h to virus and then washed four times with PBS prior to transfer to gelfoam rafts for rectal explants and to fresh culture plates for vaginal explants. Explants were kept in culture for 15 days. The concentrations of p24 in the harvested supernatants were quantified by ELISA at days 3, 7, 11 and 15 of culture. The p24 AUC<sub>3d-15d</sub> (a, b) for rectal and vaginal explants, respectively, are shown for the control and each dosing arm. Points represent the mean of duplicates for each participant, and lines the mean (+/- SEM) of each arm.