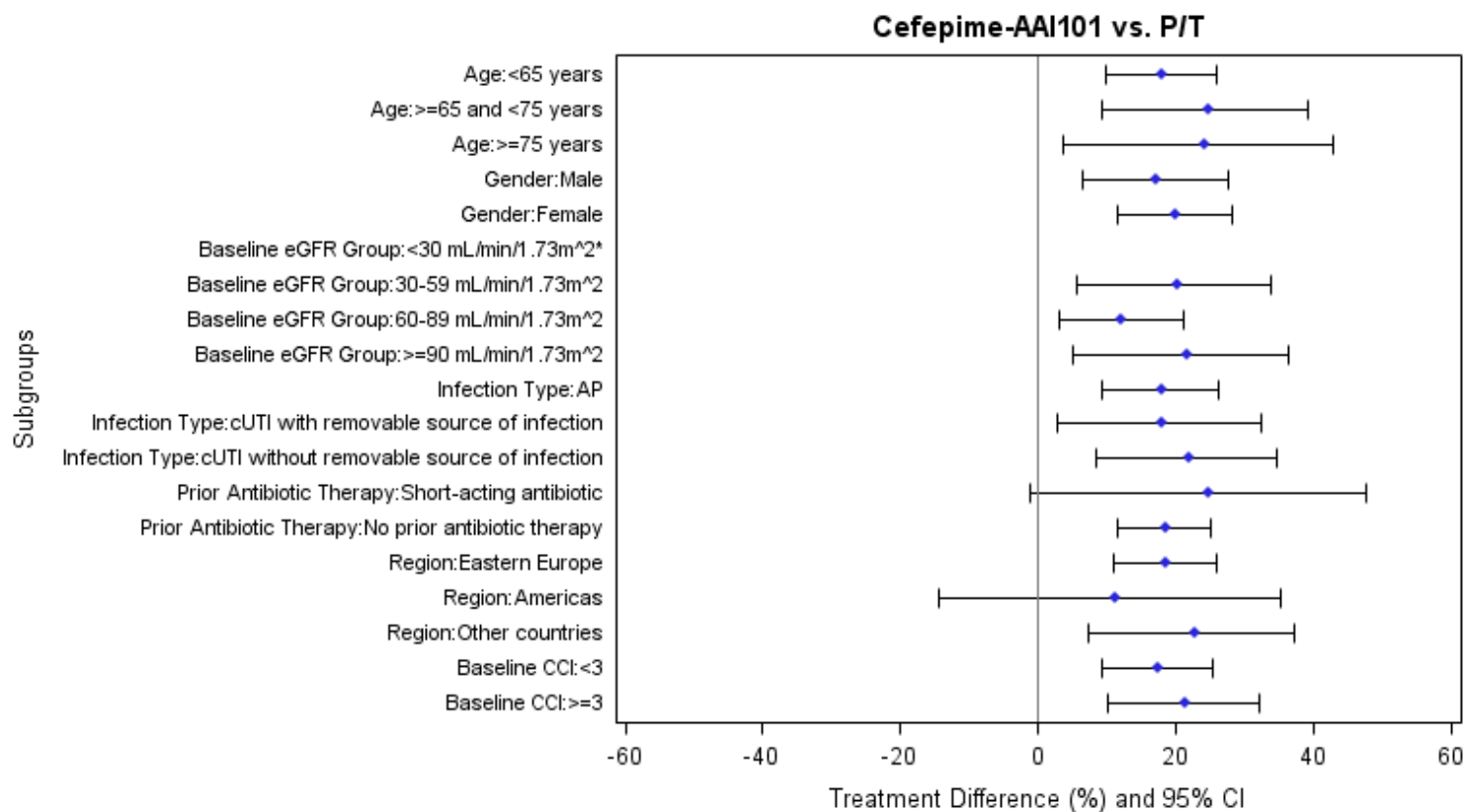
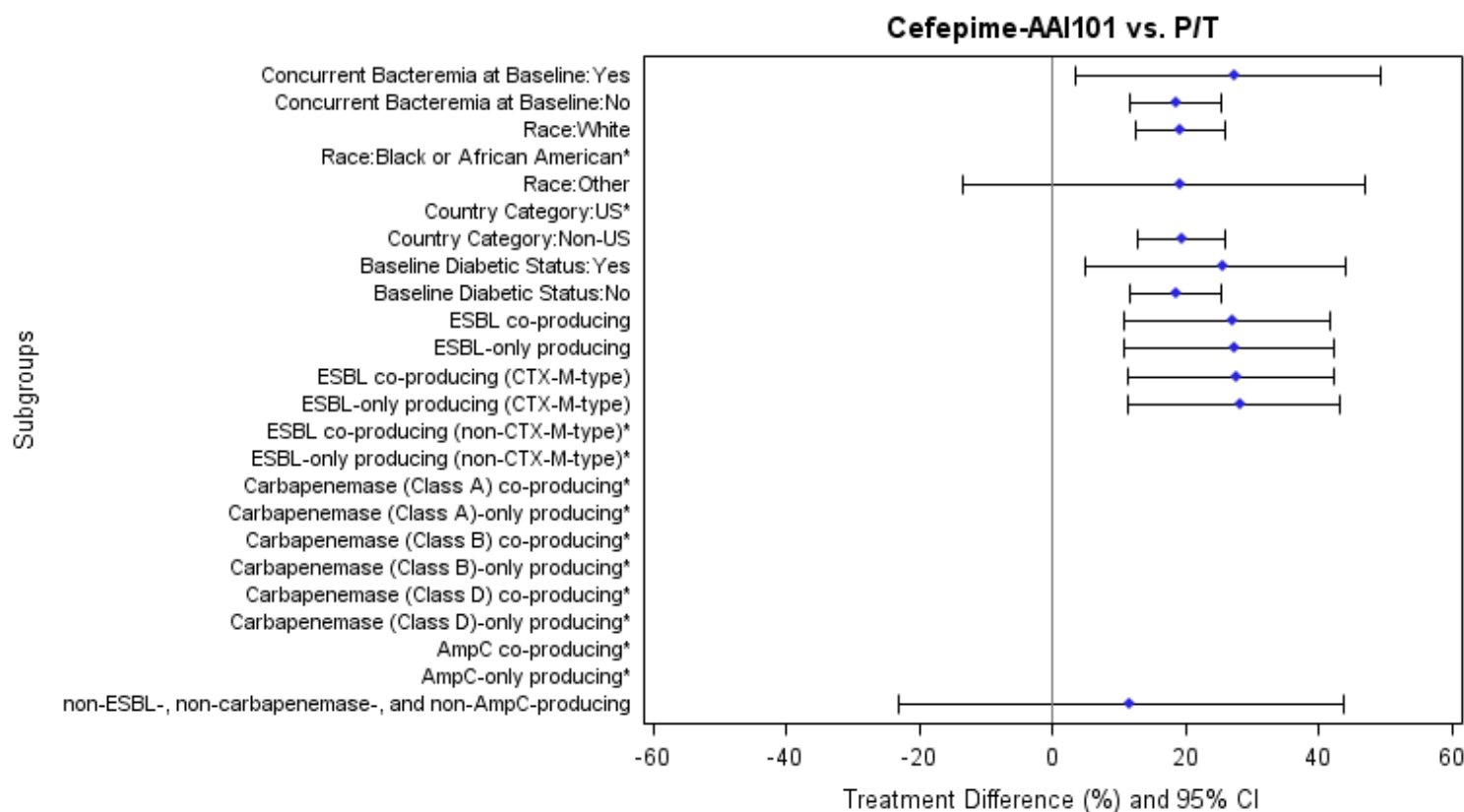


Forest Plot of Per-Patient Microbiological Eradication at TOC Visit by Subgroup Microbiological Modified Intent-to-Treat Population



* Not Estimated.

Forest Plot of Per-Patient Microbiological Eradication at TOC Visit by Subgroup Microbiological Modified Intent-to-Treat Population



* Not Estimated.

AP = acute pyelonephritis; CCI = Charlson Comorbidity Index; CI = confidence interval; cUTI = complicated urinary tract infection; eGFR = estimated glomerular filtration rate; ESBL = extended-spectrum β -lactamases; m-MITT = Microbiological Modified Intent-to-Treat; P/T = piperacillin/tazobactam; TOC = Test of Cure; US = United States; vs. = versus.

