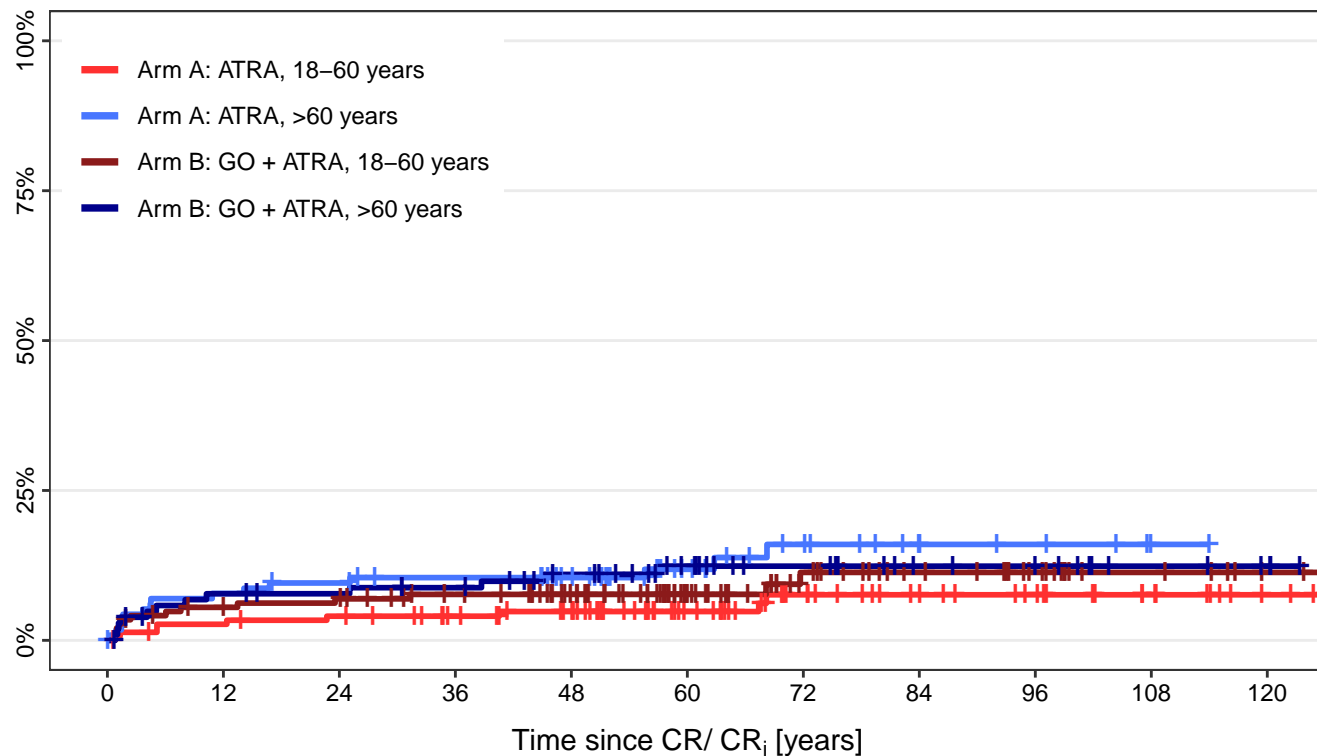


Cumulative incidence of Death in Remission



Arm A: ATRA, 18–60 years	151	112	90	82	70	47	32	23	17	10	3
Arm A: ATRA, >60 years	116	72	58	49	41	22	14	7	5	1	0
Arm B: GO + ATRA, 18–60 years	146	119	106	96	81	51	33	23	16	8	3
Arm B: GO + ATRA, >60 years	105	73	58	51	41	29	19	12	10	5	3