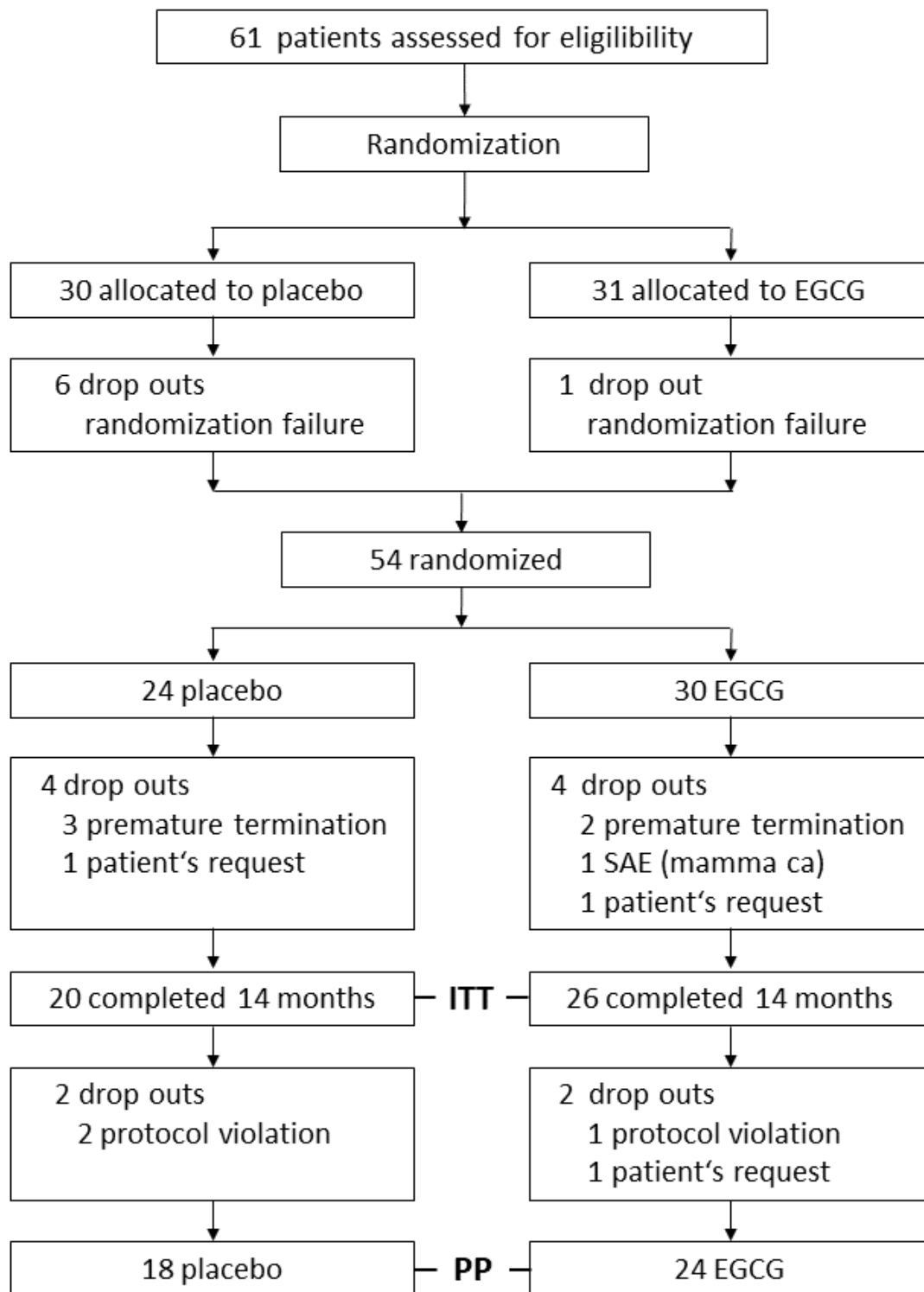
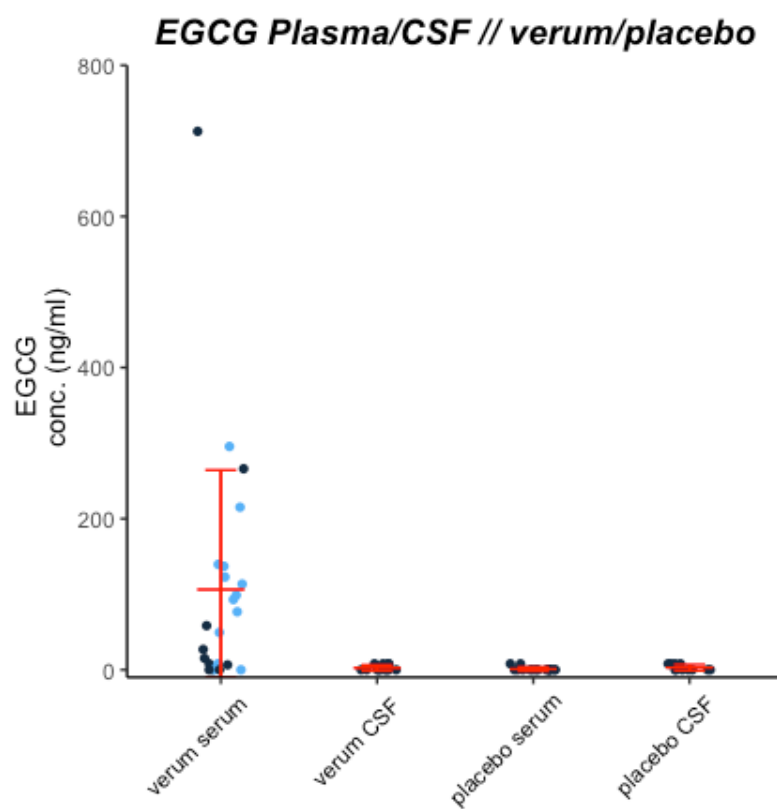


**Figure 1** CONSORT Diagram



**Figure 2** Blue dots denote participants out of the EGCG group whose EGCG CSF concentration has been ascertained.



**Table 1** Clinical Outcome Measures After 12 Months

	<b>EGCG</b>	<b>Placebo</b>	<b>p Value</b>
<b>UHDRS_COG</b>	n=25	n=20	
<b>Mean</b>	216.80 (71.72)	203.15 (67.16)	0.698
<b>Change from BL</b>	-1.52 (18.59)	-1.30 (22.01)	0.661 <sup>a</sup>
<b>STRP_T</b>	n=26	n=20	
<b>Mean</b>	153.35 (52.00)	146.55 (46.35)	0.715
<b>Change from BL</b>	-3.04 (13.48)	1.20 (14.66)	0.584 <sup>a</sup>
<b>SDMT</b>	n=25	n=20	
<b>Mean</b>	30.72 (14.09)	30,65 (13.84)	0.982
<b>Change from BL</b>	-1.20 (4.40)	-2.15 (6.00)	0.506 <sup>a</sup>
<b>VF_T</b>	n=26	n=20	
<b>Mean</b>	28.35 (12.61)	25.95 (11.71)	0.706
<b>Change from BL</b>	2.00 (7.05)	-.35 (5.10)	0.123 <sup>a</sup>
<b>BA</b>	n=26	n=20	
<b>Mean</b>	5.69 (5.49)	9.20 (7.29)	0.068
<b>Change from BL</b>	-2.42 (7.54)	1.15 (7.44)	0.304 <sup>a</sup>
<b>BDI</b>	n=26	n=20	
<b>Mean</b>	4.65 (5.18)	4.90 (4.97)	0.885
<b>Change from BL</b>	-.73 (4.56)	-.50 (4.97)	0.987 <sup>a</sup>
<b>FA</b>	n=26	n=20	
<b>Mean</b>	22.35 (3.12)	20.65 (4.53)	0.225
<b>Change from BL</b>	-.50 (1.39)	-.90 (2.13)	0.906 <sup>a</sup>
<b>IS</b>	n=26	n=20	
<b>Mean</b>	88.08 (10.11)	85.25 (12.72)	0.507
<b>Change from BL</b>	-2.88 (5.32)	-1.00 (4.47)	0.275 <sup>a</sup>
<b>MMSE</b>	n=26	n=20	
<b>Mean</b>	27.85 (2.82)	27.10 (3.75)	0.873
<b>Change from BL</b>	-.31 (1.89)	-1.05 (2.33)	0.397 <sup>a</sup>
<b>MS</b>	n=26	n=20	
<b>Mean</b>	21.58 (16,38)	26.60 (19.29)	0.471
<b>Change from BL</b>	1.31 (5.05)	3.85 (5.69)	0.192 <sup>a</sup>

<b>PANAS_N</b>	n=26	n=20	
<b>Mean</b>	15.08 (4.82)	16.55 (4.82)	0.252
<b>Change from BL</b>	-.42 (4.51)	-1.40 (7.63)	0.679 <sup>a</sup>
<b>PANAS_P</b>	n=26	n=20	
<b>Mean</b>	32.50 (10.88)	34.00 (9.63)	0.723
<b>Change from BL</b>	.23 (6.52)	.60 (7.72)	0.591 <sup>a</sup>
<b>SF36_Men</b>	n=24	n=16	
<b>Mean</b>	43.14 (19.25)	44.41 (14.40)	0.761
<b>Change from BL</b>	-2.10 (15.37)	-.61 (14.32)	0.618 <sup>a</sup>
<b>SF36_Phy</b>	n=24	n=16	
<b>Mean</b>	46.67 (12.17)	48.56 (10.70)	0.989
<b>Change from BL</b>	-2.44 (13.49)	-.47 (6.16)	0.953 <sup>a</sup>
<b>SWLS</b>	n=26	n=20	
<b>Mean</b>	24.65 (8.50)	22.80 (7.08)	0.363
<b>Change from BL</b>	-1.00 (6.17)	-1.85 (7.40)	0.996 <sup>a</sup>
<b>TAP_PA</b>	n=23	n=16	
<b>Mean</b>	376.87 (152.87)	375,25 (146.90)	0.977
<b>Change from BL</b>	36.91 (129.57)	6.31 (62.81)	0.928 <sup>a</sup>
<b>TAP_TA</b>	n=23	n=16	
<b>Mean</b>	379.70 (165.08)	367.81 (142.70)	0.989
<b>Change from BL</b>	40.65 (131.06)	-21.69 (52.31)	0.152 <sup>a</sup>
<b>TFC</b>	n=26	n=20	
<b>Mean</b>	11.12 (1.99)	10.35 (2.74)	0.557
<b>Change from BL</b>	-.04 (1.46)	-.75 (1.68)	0.296 <sup>a</sup>
<b>CGI</b>	n=26	n=20	
<b>Mean</b>	3.69 (1.12)	3.7 (1.13)	0.973
<b>Change from BL</b>	0.27 (0.53)	.00 (0.46)	0.093

Abbreviations: BL=Baseline, UHDRS\_COG=Cognitive total Score, STRP\_T=Stroop total Score, SDMT=Symbol Digit Modalities Test, VF\_T=Verbal Fluency total Score, BA= UHDRS Behavioural Score, BDI=Beck Depression Inventory, FA=UHDRS Functional Assesment, IS=UHDRS Indepedence, MMSE= Mini Mental State Examination, MS= UHDRS Motor Score, PANAS\_N= Positive and Negative Affect Schedule-Negative Score, PANAS\_P= Positive and Negative Affect Schedule-Positive Score, SF36\_Men= Short Form Health Survey-Mental Health, SF36\_Phy= Short Form Health Survey-Physical Functioning, SWLS=Satisfaction with Life Scale, TAP\_PA= Test of Attentional Performance -Phasic Alertness, TAP\_TA= Test of Attentional Performance -Tonic Alertness, TFC= UHDRS Total Functional Capacity, CGI= Clinical Global Impression.

Data are mean (SD).

<sup>a</sup> Exact Mann-Whitney test (2-tailed).